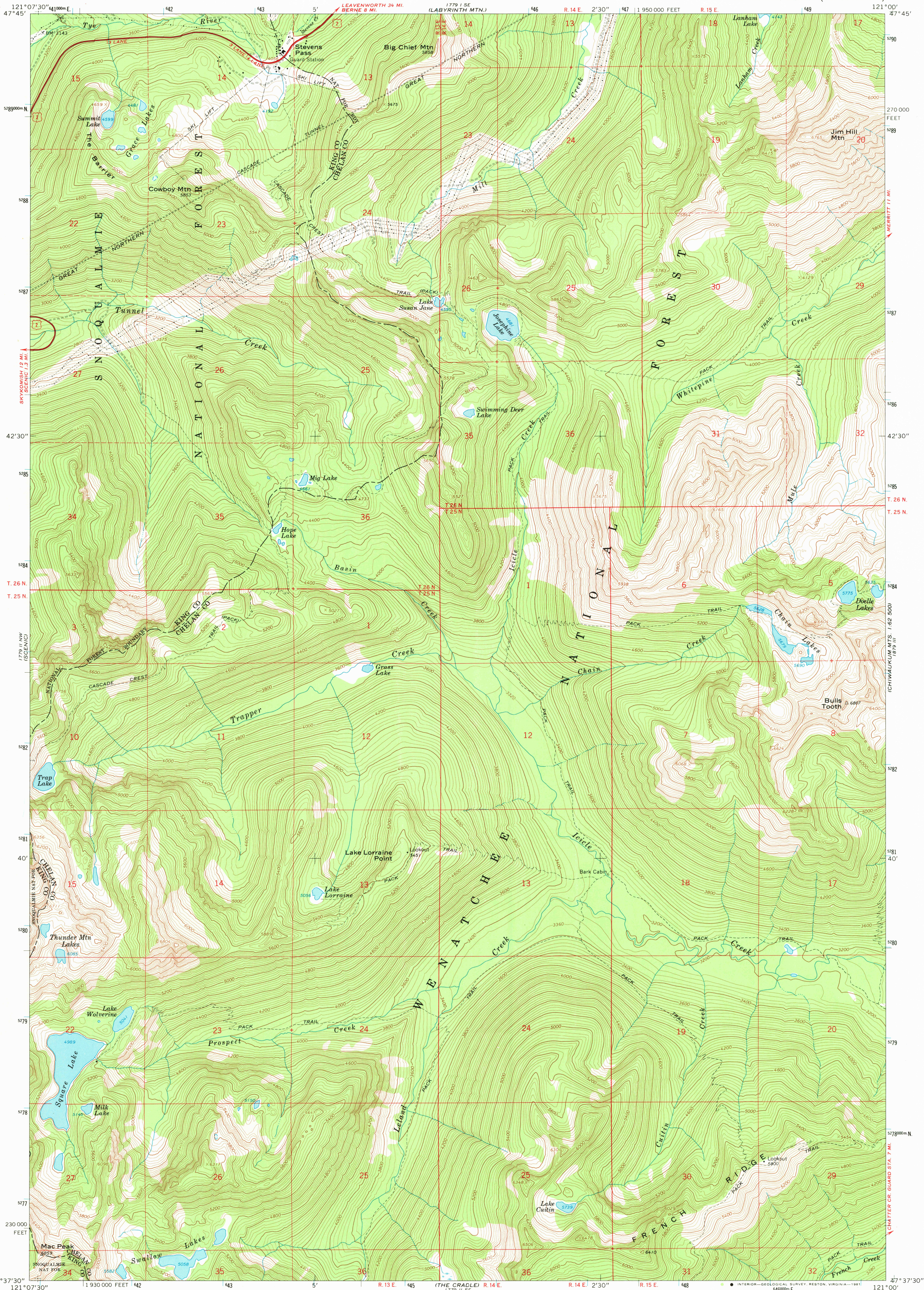


UNITED STATES  
DEPARTMENT OF THE INTERIOR  
GEOLOGICAL SURVEY

STEVENS PASS QUADRANGLE  
WASHINGTON  
7.5 MINUTE SERIES (TOPOGRAPHIC)



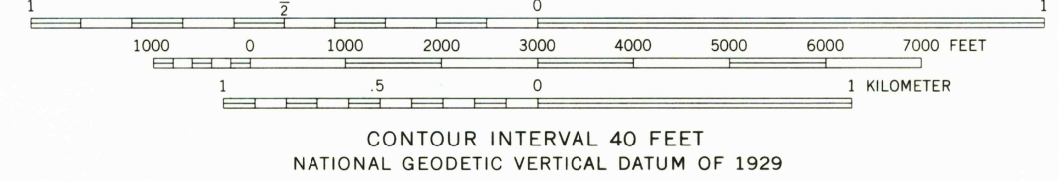
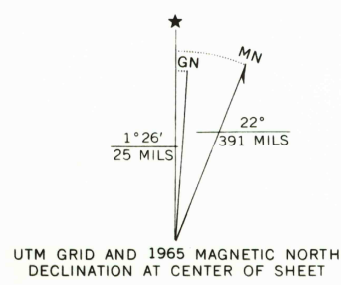
Mapped, edited, and published by the Geological Survey  
Control by USGS and USC&GS

Topography by photogrammetric methods from aerial  
photographs taken 1958. Field checked 1965

Polyconic projection. 1927 North American datum  
10,000-foot grid based on Washington coordinate system,  
north zone  
1000-meter Universal Transverse Mercator grid ticks,  
zone 10, shown in blue

To place on the predicted North American Datum 1983,  
move the projection lines 21 meters north and  
90 meters east as shown by dashed corner ticks

There may be private inholdings within the boundaries of  
the National or State reservations shown on this map



ROAD CLASSIFICATION  
Heavy-duty ————— Unimproved dirt - - - - -  
U.S. Route

STEVENS PASS, WASH.  
N4737.5-W12100.7.5

1965  
PHOTOINSPECTED 1978  
DMA 1779 II NE-SERIES V891

FOR SALE BY U. S. GEOLOGICAL SURVEY, DENVER, COLORADO 80225, OR RESTON, VIRGINIA 22092  
A FOLDER DESCRIBING TOPOGRAPHIC MAPS AND SYMBOLS IS AVAILABLE ON REQUEST

Map photoinspected 1978  
No major culture or drainage changes observed

USGS  
Historical File  
National Mapping Div.

3600  
MAY 20 1981