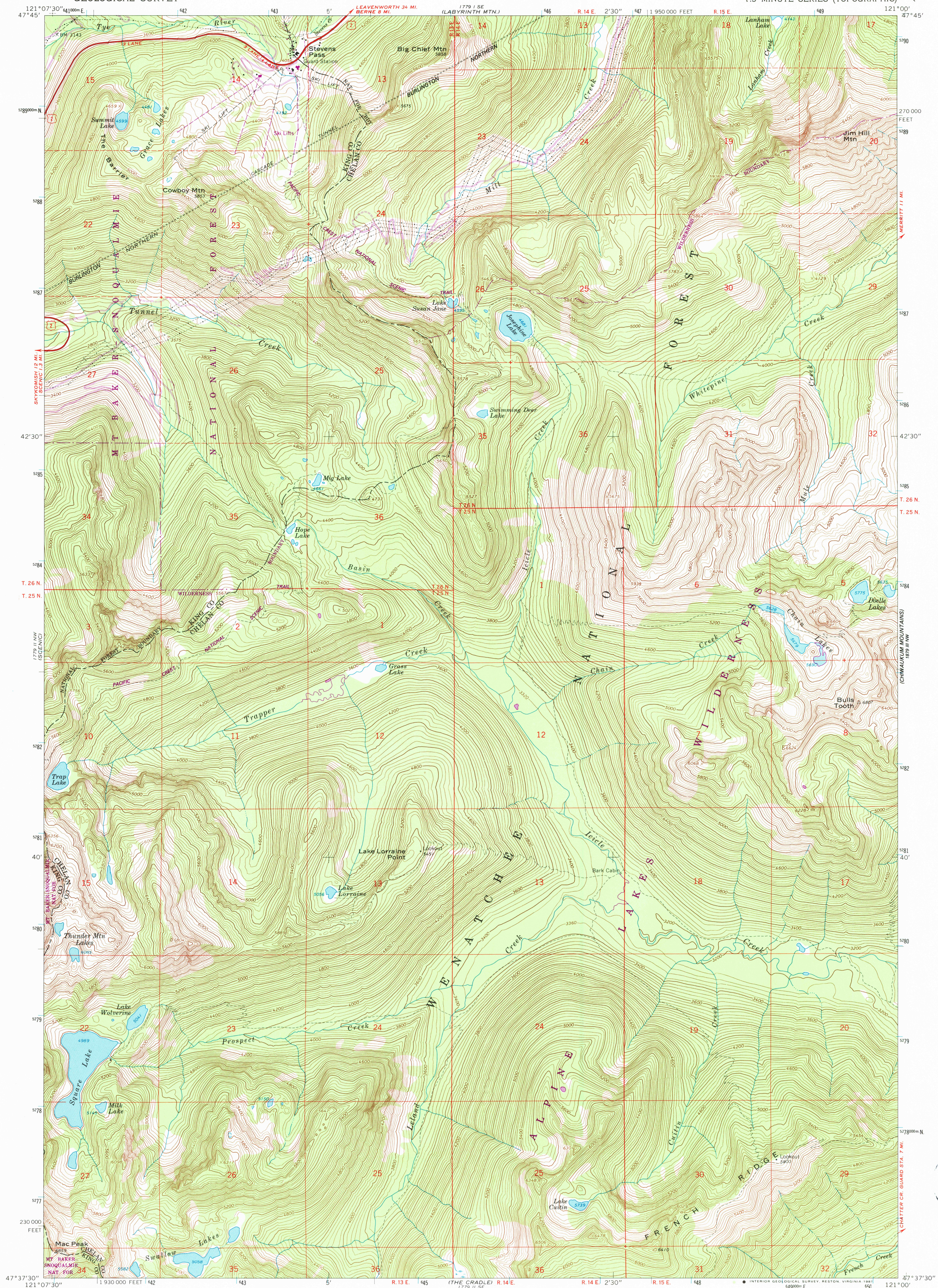


UNITED STATES
DEPARTMENT OF THE INTERIOR
GEOLOGICAL SURVEY

STEVENS PASS QUADRANGLE
WASHINGTON
7.5 MINUTE SERIES (TOPOGRAPHIC)



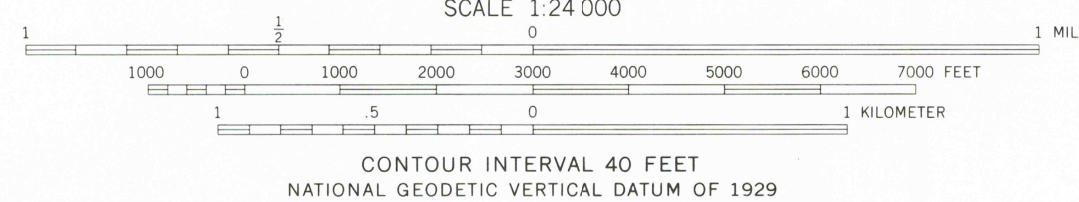
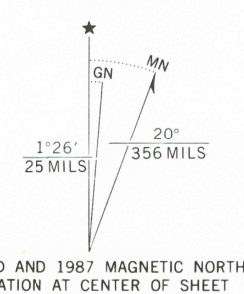
Mapped, edited, and published by the Geological Survey
Control by USGS and NOS/NOAA

Topography by photogrammetric methods from aerial
photographs taken 1958. Field checked 1965

Polyconic projection. 1927 North American Datum
10,000-foot grid based on Washington coordinate system,
north zone
1000-meter Universal Transverse Mercator grid ticks,
zone 10, shown in blue

To place on the predicted North American Datum 1983,
move the projection lines 21 meters north and
90 meters east as shown by dashed corner ticks

There may be private inholdings within the boundaries of
the National or State reservations shown on this map



ROAD CLASSIFICATION
Heavy-duty ————— Unimproved dirt —————
U. S. Route

STEVENS PASS, WASH.
47121-F1-TF-024

1965
PHOTOREVISED 1987
DMA 1779 II NE - SERIES V891

FOR SALE BY U. S. GEOLOGICAL SURVEY, DENVER, COLORADO 80225, OR RESTON, VIRGINIA 22092
A FOLDER DESCRIBING TOPOGRAPHIC MAPS AND SYMBOLS IS AVAILABLE ON REQUEST

Revisions shown in purple and woodland
compiled from aerial photographs taken 1984
and other source data. Partial field check
by U. S. Forest Service. Map edited 1987