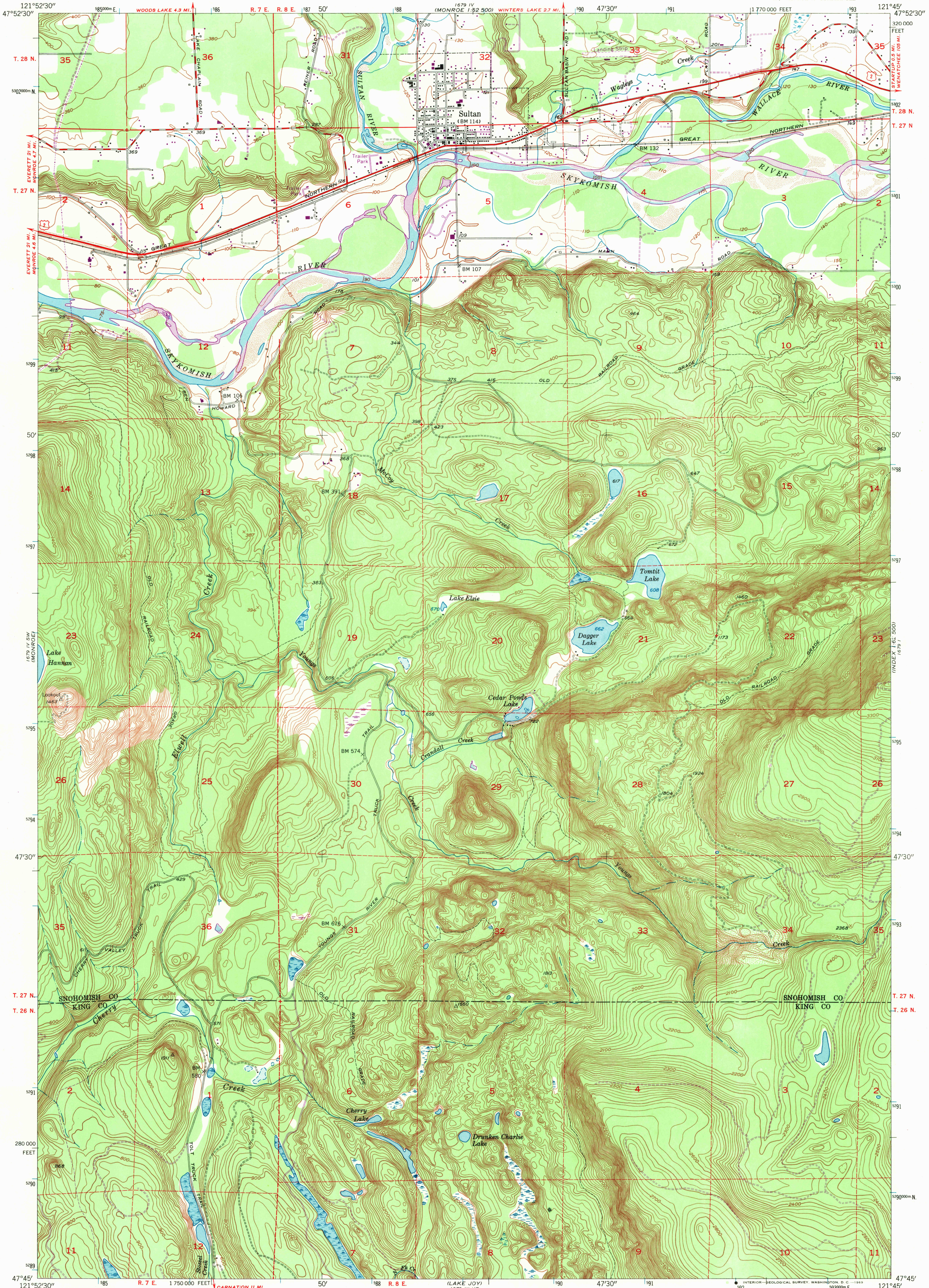


UNITED STATES
DEPARTMENT OF THE INTERIOR
GEOLOGICAL SURVEY

SULTAN QUADRANGLE
WASHINGTON
7.5 MINUTE SERIES (TOPOGRAPHIC)
SE/4 MONROE 15' QUADRANGLE



Mapped, edited, and published by the Geological Survey

Control by USGS and USC&GS

Topography from aerial photographs by multiplex methods and by plane-table surveys 1953. Aerial photographs taken 1952

Polyconic projection. 1927 North American datum

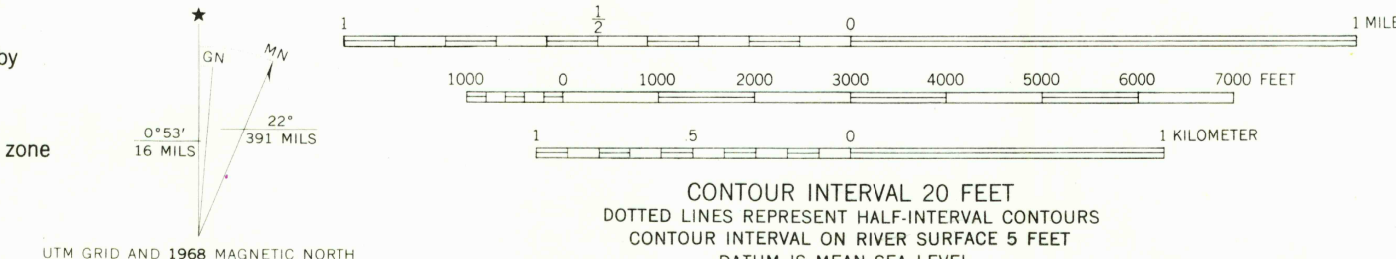
10,000-foot grid based on Washington coordinate system, north zone

Dashed land lines indicate approximate locations

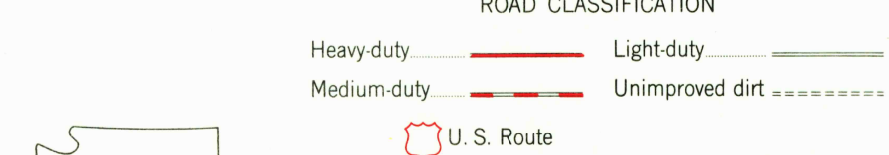
Unchecked elevations are shown in brown

1000-meter Universal Transverse Mercator grid ticks, zone 10, shown in blue

Revisions shown in purple compiled from aerial photographs taken 1968. This information not field checked



SCALE 1:24,000
CONTOUR INTERVAL 20 FEET
DOTTED LINES REPRESENT HALF-INTERVAL CONTOURS
CONTOUR INTERVAL ON RIVER SURFACE 5 FEET
DATUM IS MEAN SEA LEVEL



QUADRANGLE LOCATION

ROAD CLASSIFICATION
Heavy-duty ——— Light-duty ———
Medium-duty ——— Unimproved dirt ———
U.S. Route

USGS
Historical File
Topographic Division

SULTAN, WASH.
SE/4 MONROE 15' QUADRANGLE
N4745-W12145/7.5

1953
PHOTOREVISED 1968
AMS 1679 IV SE—SERIES V891

FOR SALE BY U.S. GEOLOGICAL SURVEY, DENVER, COLORADO 80225, OR WASHINGTON, D. C. 20242
A FOLDER DESCRIBING TOPOGRAPHIC MAPS AND SYMBOLS IS AVAILABLE ON REQUEST

U.S.G.S.
FILE COPY
TOPOGRAPHIC DIVISION

2750
JAN 13 1970