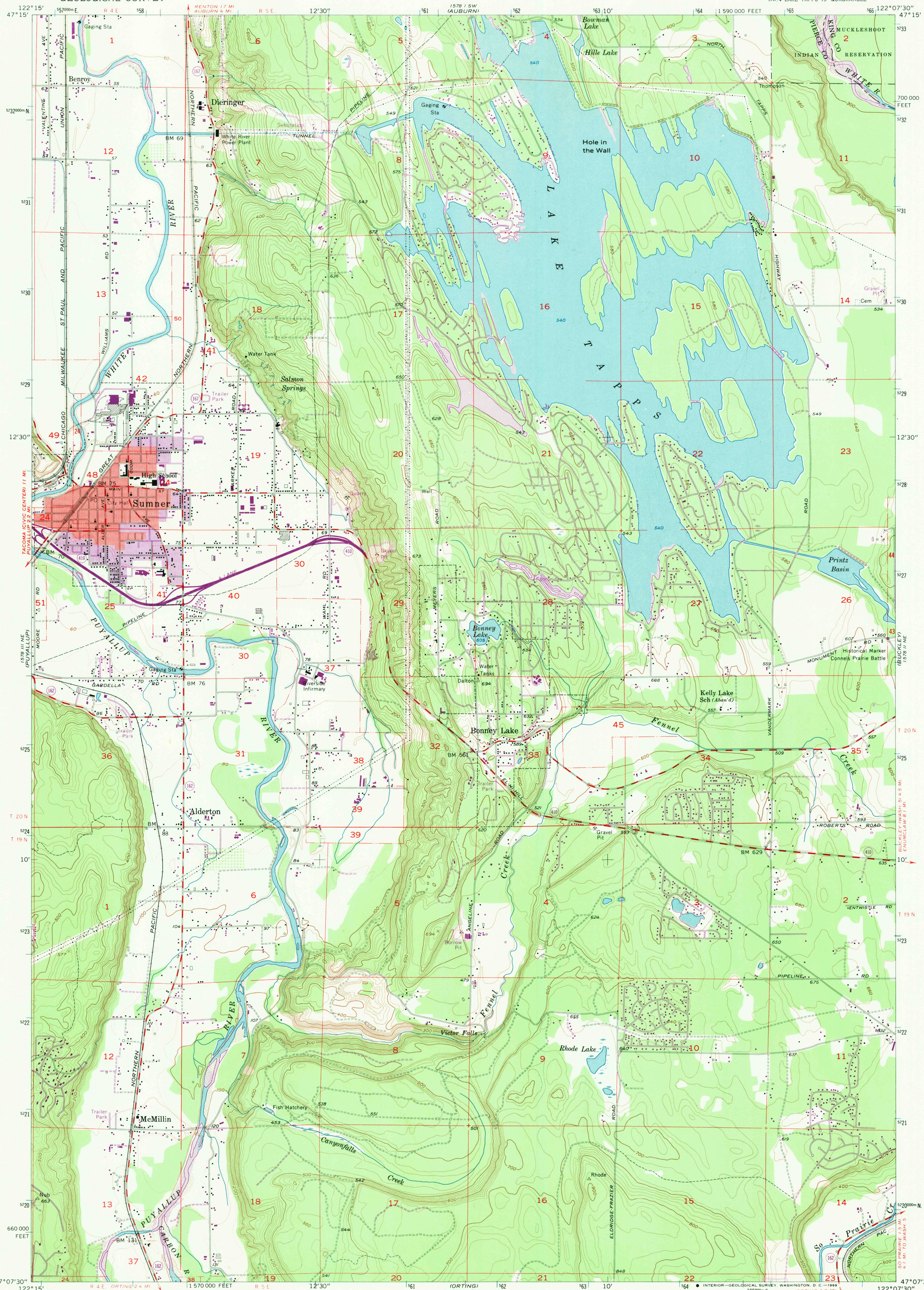
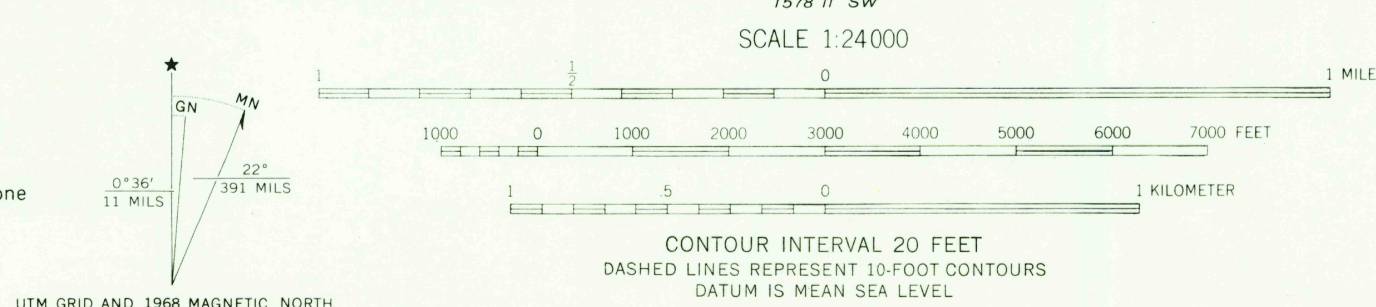


UNITED STATES  
DEPARTMENT OF THE INTERIOR  
GEOLOGICAL SURVEY

SUMNER QUADRANGLE  
WASHINGTON  
7.5 MINUTE SERIES (TOPOGRAPHIC)  
NW/4 LAKE TAPPS 15' QUADRANGLE



Mapped, edited, and published by the Geological Survey  
Control by USGS and USCA&GS  
Topography from aerial photographs by multiple methods  
and by planimetric surveys 1956. Aerial photographs taken 1954  
Polyconic projection. 1927 North American datum  
10,000-foot grid based on Washington coordinate system, south zone  
1000-meter Universal Transverse Mercator grid ticks,  
zone 10, shown in blue  
Red tint indicates areas in which only  
landmark buildings are shown  
Revisions shown in purple compiled from aerial photographs  
taken 1968. This information not field checked  
Purple tint indicates extension of urban areas



ROAD CLASSIFICATION  
Medium-duty ——— Light-duty ———  
Unimproved dirt ———  
Heavy-duty ——— State Route ———

USGS  
Historical File  
Topographic Division

SUMNER, WASH.  
NW/4 LAKE TAPPS 15' QUADRANGLE  
N4707.5—W12207.5/7.5  
1956  
PHOTOGRAPHED 1968  
AMS 1578 II NW—SERIES V891

U.S.G.S.  
FILE COPY  
TOPOGRAPHIC DIVISION

3070

DEC 23 1969