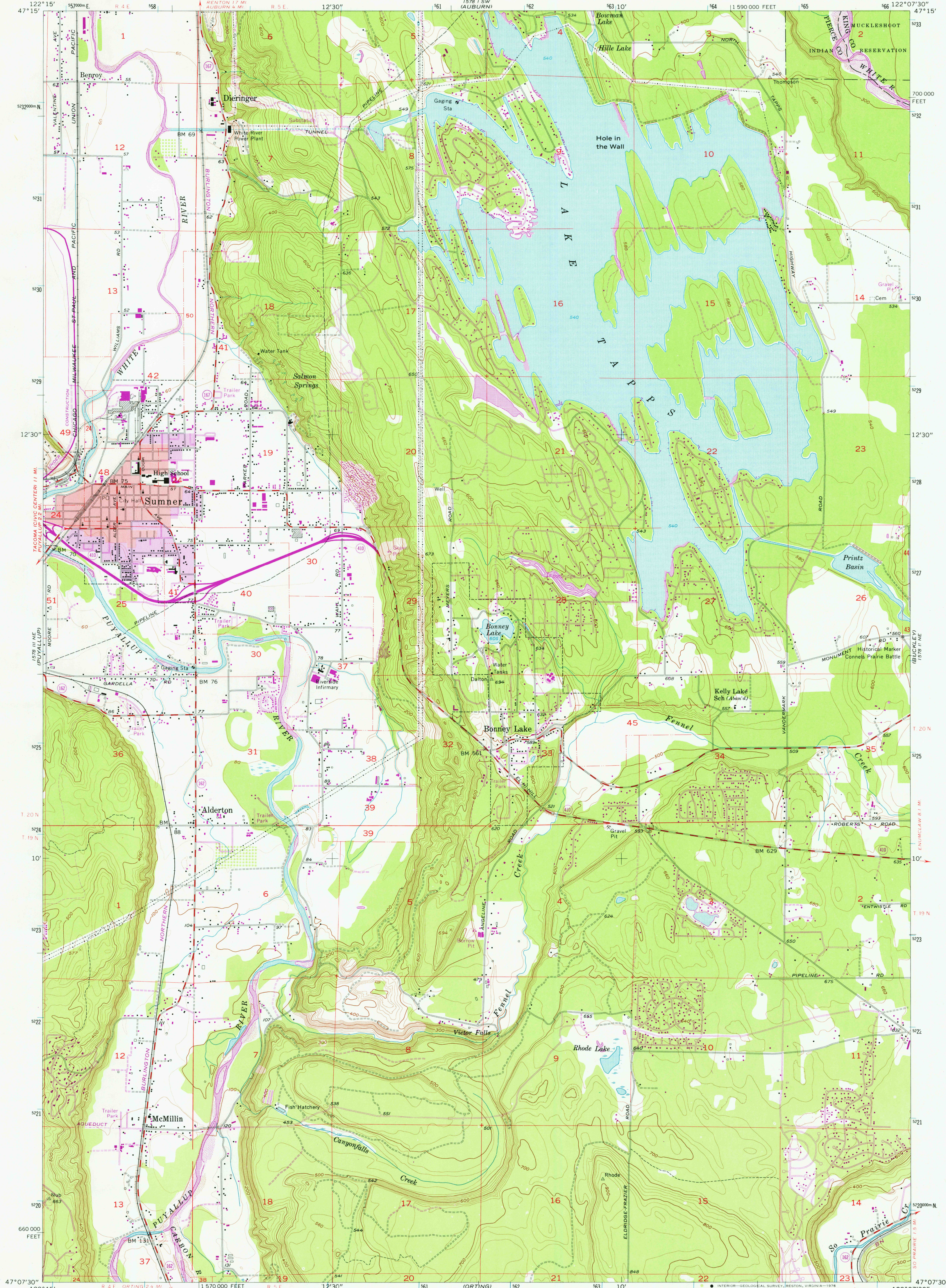
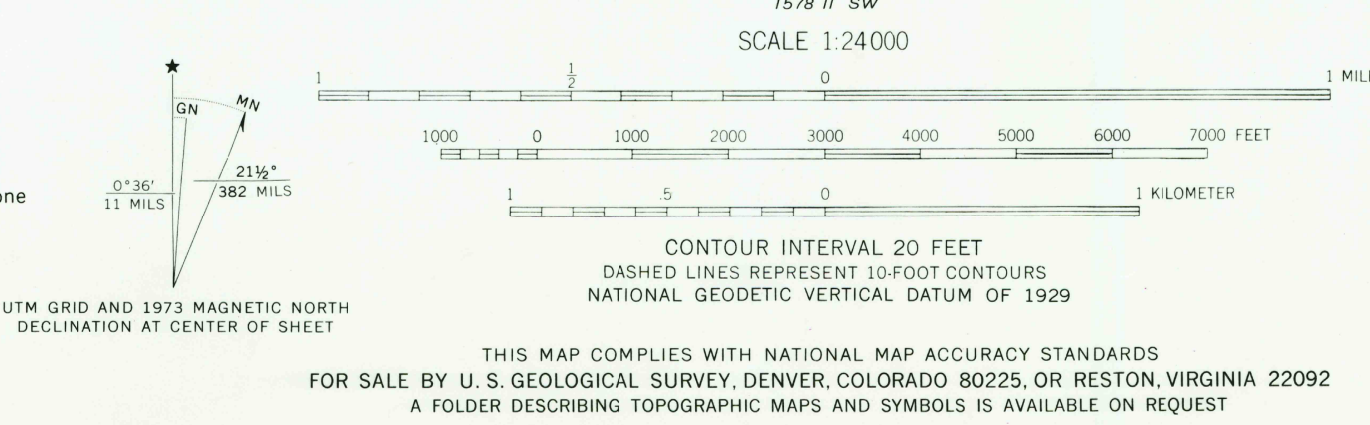


UNITED STATES
DEPARTMENT OF THE INTERIOR
GEOLOGICAL SURVEY

SUMNER QUADRANGLE
WASHINGTON
7.5 MINUTE SERIES (TOPOGRAPHIC)
NW/4 LAKE TAPPS 15' QUADRANGLE



Maped, edited, and published by the Geological Survey
Control by USGS and USC&GS
Topography from aerial photographs by multiplex methods
and by planetable surveys 1956. Aerial photographs taken 1954
Polyconic projection. 1927 North American datum
10,000-foot grid based on Washington coordinate system, south zone
1000-meter Universal Transverse Mercator grid ticks,
zone 10, shown in blue
Red tint indicates areas in which only
landmark buildings are shown
Revisions shown in purple compiled from aerial photographs
taken 1968 and 1973. This information not field checked
Purple tint indicates extension of urban areas



ROAD CLASSIFICATION
Medium-duty ——— Light-duty ———
Unimproved dirt ——— State Route ———
Heavy-duty ———
SUMNER, WASH.
NW/4 LAKE TAPPS 15' QUADRANGLE
N4707.5—W12207.5/7.5
1956
PHOTOREVISED 1968 AND 1973
AMS 1578 II NW—SERIES V891

MAR 0 5 1976