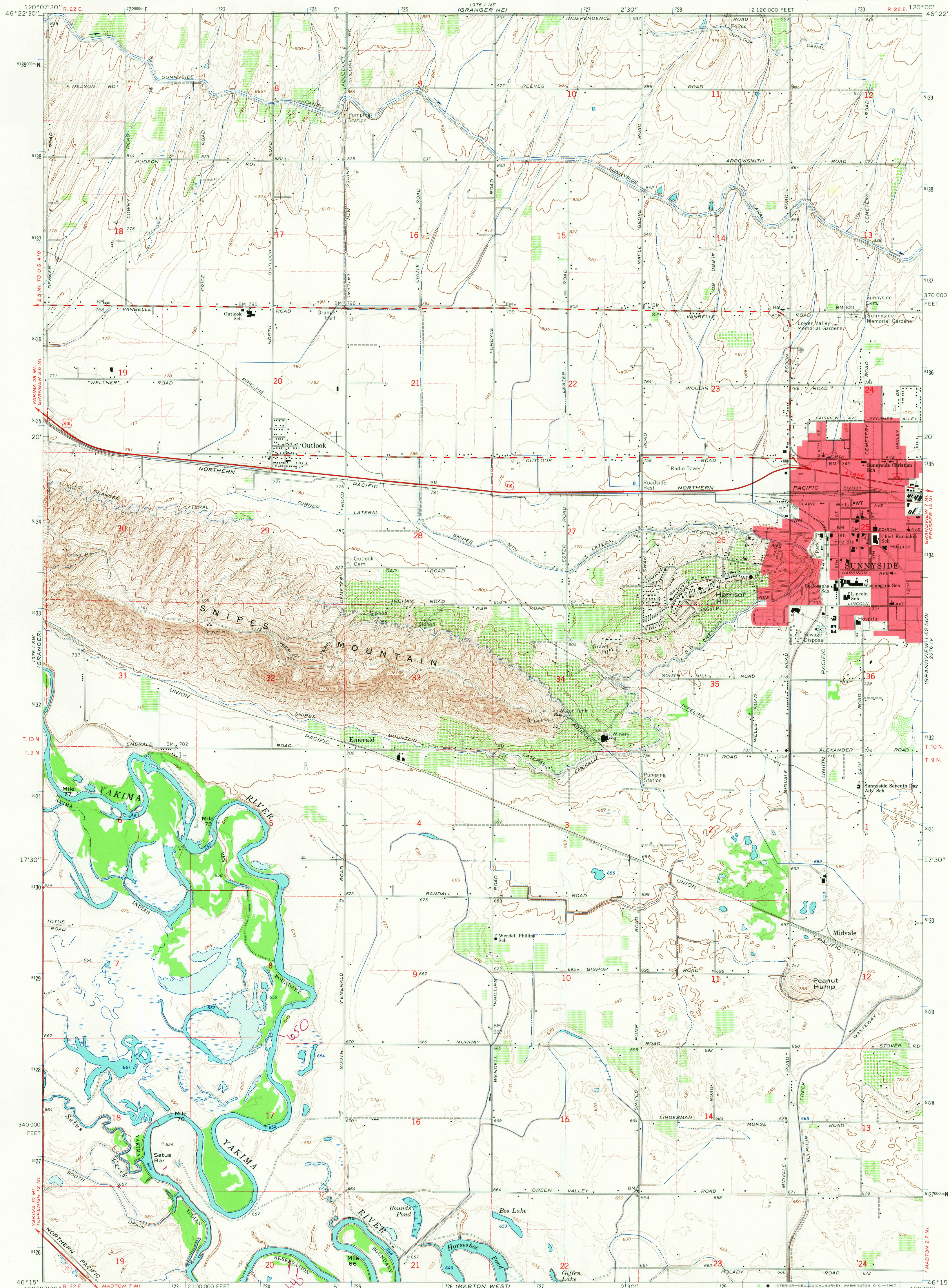


UNITED STATES
DEPARTMENT OF THE INTERIOR
GEOLOGICAL SURVEY

SUNNYSIDE QUADRANGLE
WASHINGTON—YAKIMA CO.
7.5 MINUTE SERIES (TOPOGRAPHIC)
SE/4 GRANGER 15' QUADRANGLE



Mapped, edited, and published by the Geological Survey

Control by USGS, USC&GS, and U. S. Bureau of Reclamation

Topography by photogrammetric methods from aerial photographs

taken 1963 and planimetric surveys by USBR 1911

Field checked 1965

Polyconic projection. 1927 North American datum

10,000-foot grid based on Washington coordinate system,

South zone

100-meter Universal Transverse Mercator grid ticks,

zone 10, shown in blue

Red tint indicates areas in which only

landmark buildings are shown

Fine red dashed lines indicate selected fence lines

SCALE 1:24,000

1000 0 1000 2000 3000 4000 5000 6000 7000 FEET

1 1 KILOMETER

CONTOUR INTERVAL 10 FEET

DOTTED LINES REPRESENT 5-FOOT CONTOURS

DATUM IS MEAN SEA LEVEL

THIS MAP COMPLIES WITH NATIONAL MAP ACCURACY STANDARDS

FOR SALE BY U. S. GEOLOGICAL SURVEY, DENVER, COLORADO 80225, OR WASHINGTON, D. C. 20242

A FOLDER DESCRIBING TOPOGRAPHIC MAPS AND SYMBOLS IS AVAILABLE ON REQUEST

ROAD CLASSIFICATION

Heavy-duty Light-duty

Medium-duty Unimproved dirt

U. S. Route State Route

WASHINGTON

QUADRANGLE LOCATION

U.S.G.S.

SUNNYSIDE, WASH.

SE/4 GRANGER 15' QUADRANGLE

N4615—W12000/7.5

1965

FILE COPY

TOPOGRAPHIC DIVISION

USGS
Historical File
Topographic Division

3315

WEP 17 1967