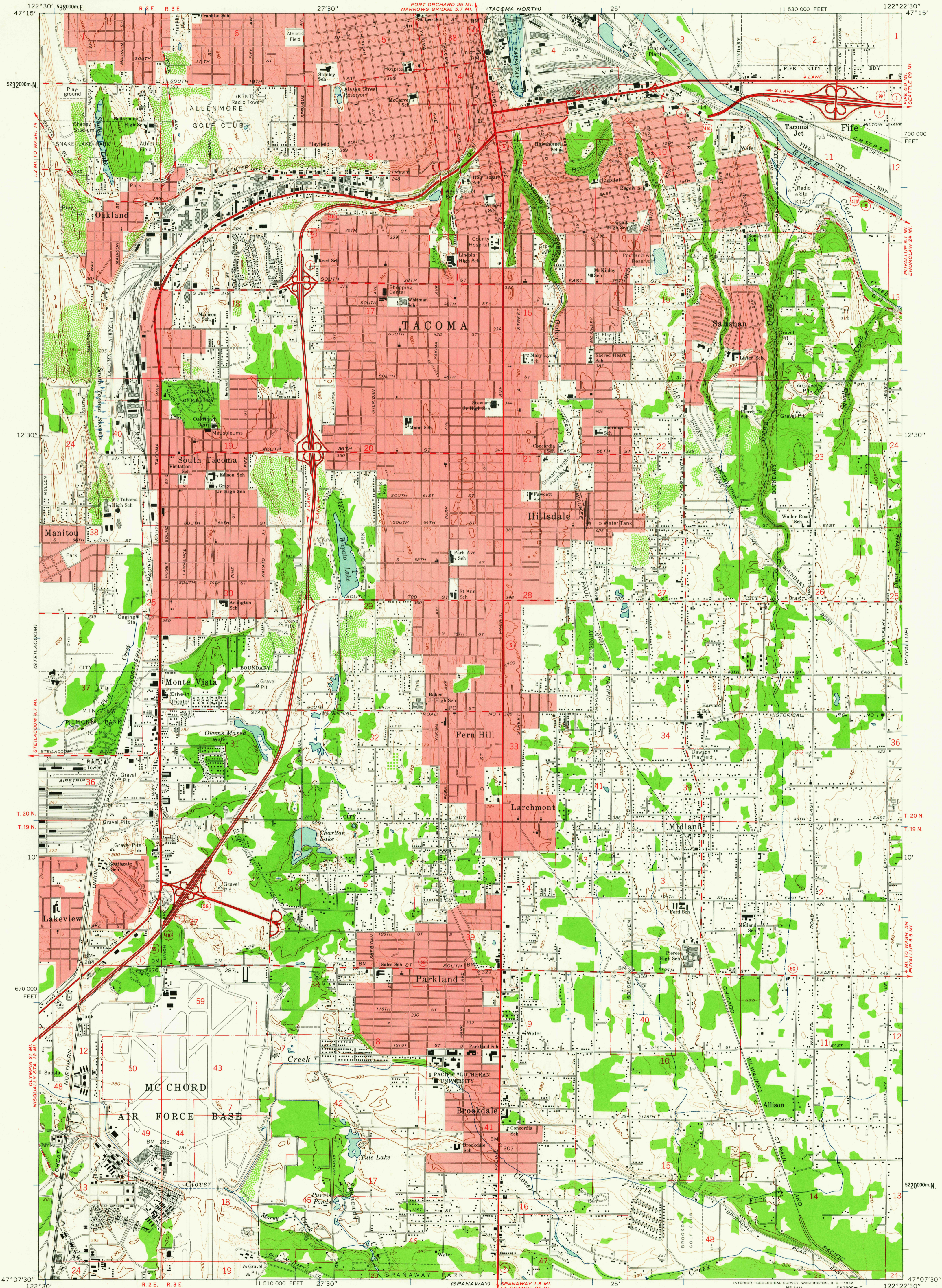
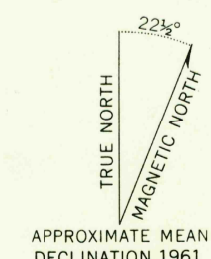


UNITED STATES
DEPARTMENT OF THE INTERIOR
GEOLOGICAL SURVEY

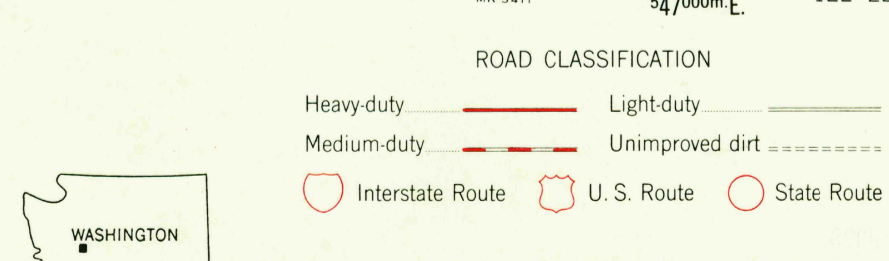
TACOMA SOUTH QUADRANGLE
WASHINGTON—PIERCE CO.
7.5 MINUTE SERIES (TOPOGRAPHIC)
NW/4 TACOMA SOUTH 15' QUADRANGLE



Mapped, edited, and published by the Geological Survey
Control by USGS, USC&GS, and USCE
Topography by photogrammetric methods from aerial
photographs taken 1957. Field checked 1961
Hydrography compiled from USC&GS Chart 6407 (1958)
This information is not intended for navigational purposes
Polyconic projection. 1927 North American datum
10,000-foot grid based on Washington coordinate system, south zone
1000-meter Universal Transverse Mercator grid ticks,
zone 10, shown in blue
Red tint indicates areas in which only landmark buildings are shown



SCALE 1:24,000
1 000 0 1000 2000 3000 4000 5000 6000 7000 FEET
1 0 1 2 3 4 5 6 7 8 9 10 KILOMETER
CONTOUR INTERVAL 20 FEET
DOTTED LINES REPRESENT 10-FOOT CONTOURS
DATUM IS MEAN SEA LEVEL
DEPTH CURVES AND SOUNDINGS IN FEET—DATUM IS MEAN LOWER LOW WATER
THIS MAP COMPLIES WITH NATIONAL MAP ACCURACY STANDARDS
FOR SALE BY U.S. GEOLOGICAL SURVEY, DENVER 25, COLORADO OR WASHINGTON 25, D. C.
A FOLDER DESCRIBING TOPOGRAPHIC MAPS AND SYMBOLS IS AVAILABLE ON REQUEST



ROAD CLASSIFICATION
Heavy-duty — Light-duty
Medium-duty — Unimproved dirt
Interstate Route U.S. Route State Route
TACOMA SOUTH, WASH.
USGS NW/4 TACOMA SOUTH 15' QUADRANGLE
Historical File N4707.5—W12222.5/7.5
Topographic Division 1961
U.S.G.S. FILE COPY 3540
TOPOGRAPHIC DIVISION

OCT 19 1962