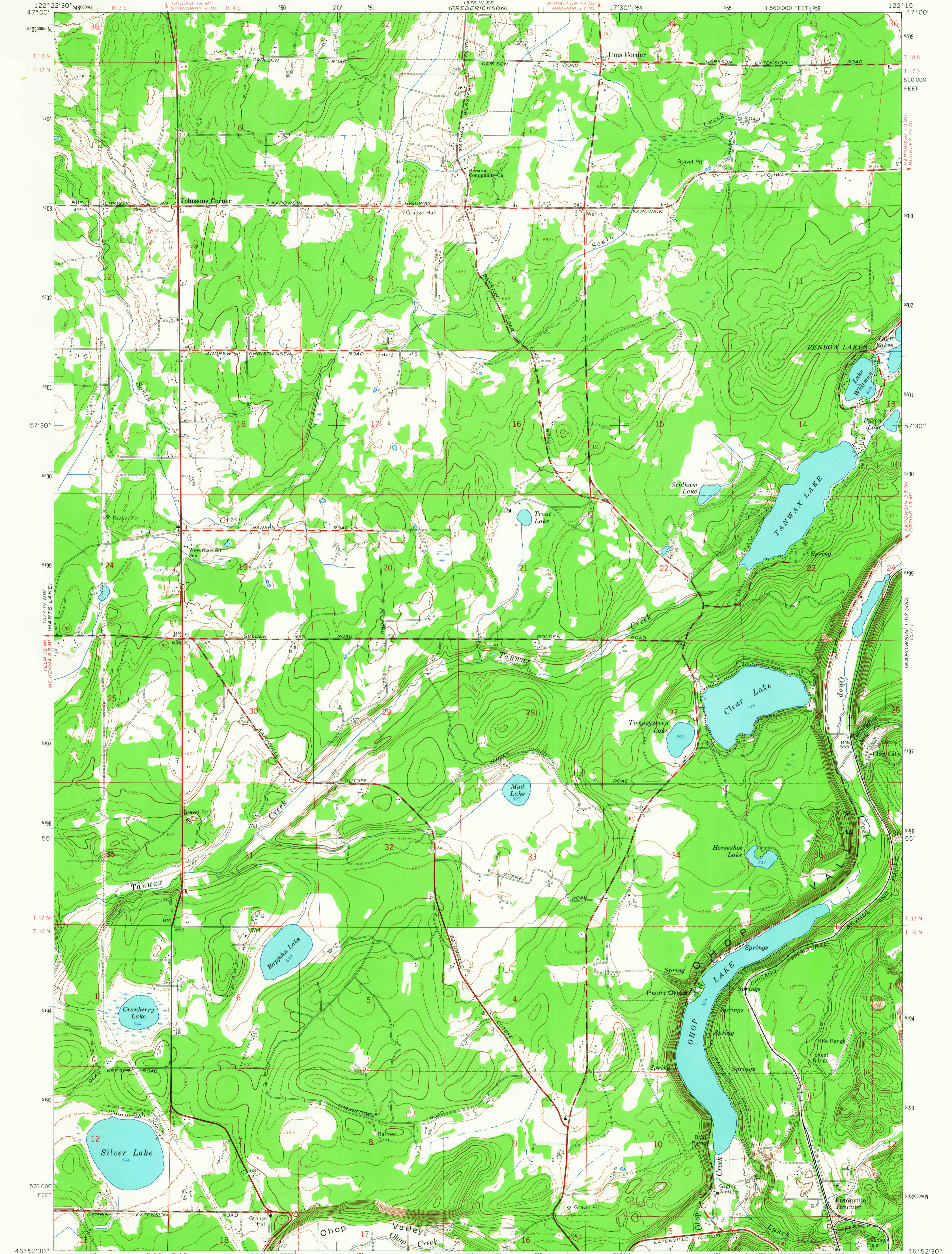
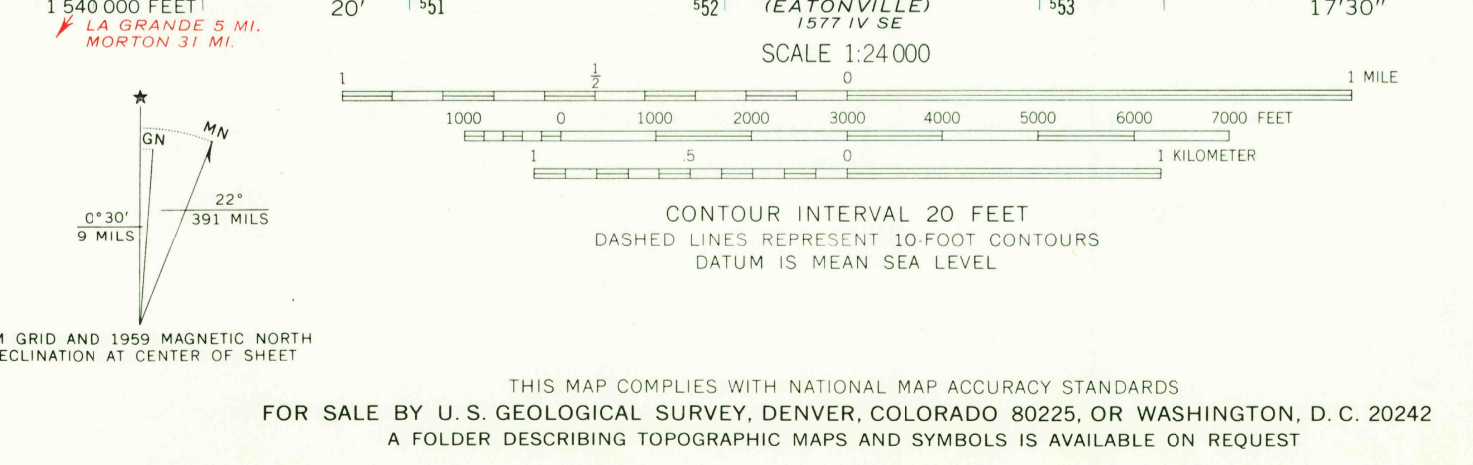


157° 11' SW
(SPANNAWAY)

157° 11' SW
(ORTING)



Mapped by the Army Map Service
Published for civil use by the Geological Survey
Control by USGS, USC&GS, and USCE
Topography by photogrammetric methods from aerial
photographs taken 1957. Field checked 1959
Polyconic projection. 1927 North American datum
10,000-foot grid based on Washington coordinate system,
south zone
1000-meter Universal Transverse Mercator grid ticks,
zone 10, shown in blue
Fine red dashed lines indicate selected fence lines
Land lines added and minor corrections by USGS 1965



ROAD CLASSIFICATION
Heavy-duty ——— Light-duty ———
Medium-duty ——— Unimproved dirt - - - - -
State Route ○

USGS Historical File
Topographic Division
WASHINGTON
U.S.G.S.
QUADRANGLE LOCATION
FILE COPY
TOPOGRAPHIC DIVISION

TANWAX LAKE, WASH.
NE/4 OHOP VALLEY 15' QUADRANGLE
N4652.5—W12215/7.5
1959
AMS 1577 IV NE—SERIES V891

3795
MAR 6 1957