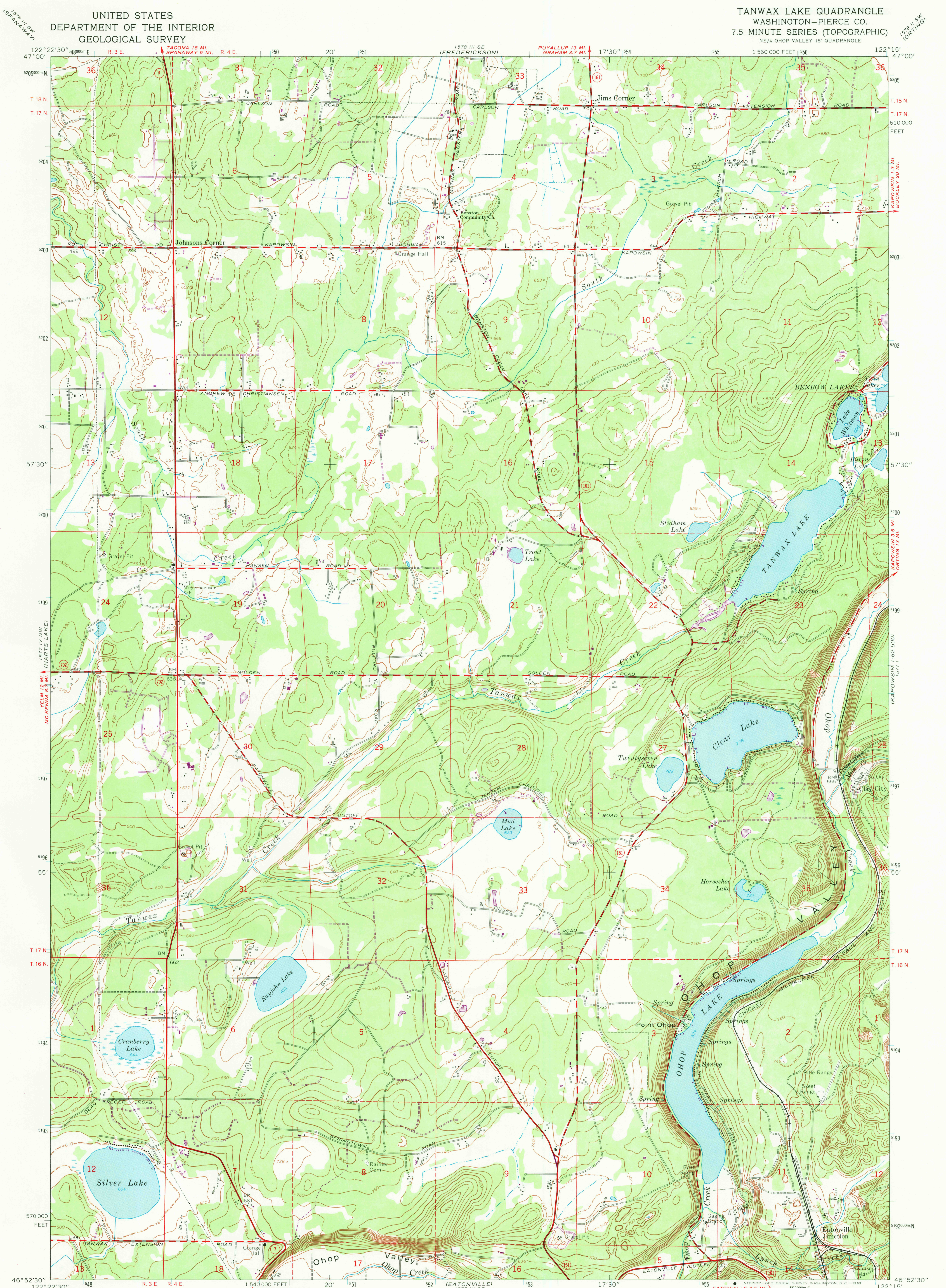


UNITED STATES
DEPARTMENT OF THE INTERIOR
GEOLOGICAL SURVEY

TANWAX LAKE QUADRANGLE
WASHINGTON—PIERCE CO.
7.5 MINUTE SERIES (TOPOGRAPHIC)
NE/4 OHOP VALLEY 15' QUADRANGLE



Mapped by the Army Map Service
Published for civil use by the Geological Survey
Control by USGS, USC&GS, and USCE
Topography by photogrammetric methods from aerial
photographs taken 1957. Field checked 1959
Polyconic projection. 1927 North American datum
10,000-foot grid based on Washington coordinate system,
south zone
1000-meter Universal Transverse Mercator grid ticks,
zone 10, shown in blue
Fine red dashed lines indicate selected fence lines
Land lines added and minor corrections by USGS 1965
Revisions shown in purple compiled by the Geological Survey from
aerial photographs taken 1968. This information not field checked

SCALE 1:24,000
CONTOUR INTERVAL 20 FEET
DASHED LINES REPRESENT 10-FOOT CONTOURS
DATUM IS MEAN SEA LEVEL
THIS MAP COMPLIES WITH NATIONAL MAP ACCURACY STANDARDS
FOR SALE BY U.S. GEOLOGICAL SURVEY, DENVER, COLORADO 80225, OR WASHINGTON, D. C. 20242
A FOLDER DESCRIBING TOPOGRAPHIC MAPS AND SYMBOLS IS AVAILABLE ON REQUEST

ROAD CLASSIFICATION
Heavy-duty ——— Light duty ———
Medium-duty ——— Unimproved dirt ———
State Route ○
USGS
Historical File
Topographic Division
TANWAX LAKE, WASH.
NE/4 OHOP VALLEY 15' QUADRANGLE
N4652.5—W12215/7.5
1959
PHOTOREVISED 1968
AMS 1577 IV NE—SERIES V891

3305
OCT 3 1969