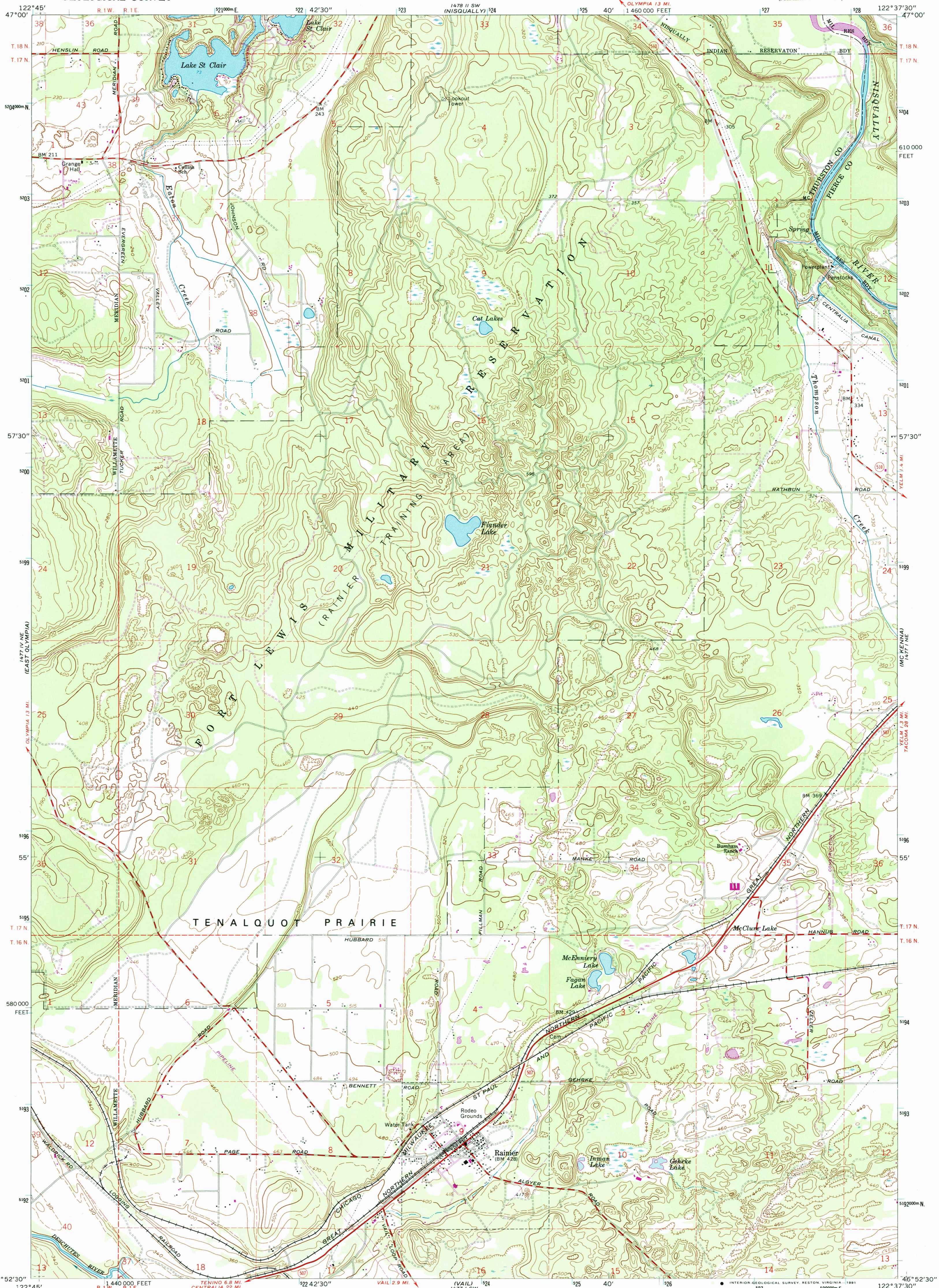
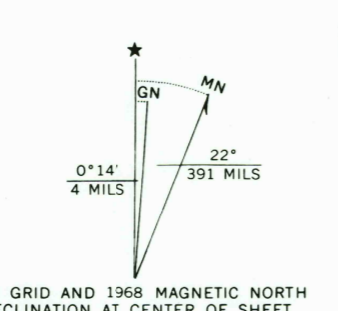


UNITED STATES
DEPARTMENT OF THE INTERIOR
GEOLOGICAL SURVEY

TENALQUOT PRAIRIE QUADRANGLE
WASHINGTON
7.5 MINUTE SERIES (TOPOGRAPHIC)
(FORMERLY WEIR PRAIRIE)



Maped by the Defense Mapping Agency
Edited and published by the Geological Survey
Control by USGS, NOS/NOAA and USCE
Topography by photogrammetric methods from aerial photographs
taken 1957. Field checked 1959
Polyconic projection. 1927 North American Datum
10,000-foot grid based on Washington coordinate system,
south zone
1000-meter Universal Transverse Mercator grid ticks, zone 10,
shown in blue
The difference between 1927 North American Datum and North
American Datum of 1983 (NAD 83) for 7.5 minute intersections is
given in USGS Bulletin 1875. The NAD 83 is shown by dashed
corner ticks
Dashed land line indicate approximate locations



SCALE 1:24,000
CONTOUR INTERVAL 20 FEET
DASHED LINES REPRESENT 10-FOOT CONTOURS
NATIONAL GEODETIC VERTICAL DATUM OF 1929
THIS MAP COMPLIES WITH NATIONAL MAP ACCURACY STANDARDS
FOR SALE BY U.S. GEOLOGICAL SURVEY
DENVER, COLORADO 80225, OR RESTON, VIRGINIA 22092
A FOLDER DESCRIBING TOPOGRAPHIC MAPS AND SYMBOLS IS AVAILABLE ON REQUEST
There may be private inholdings within the boundaries of
the National or State reservations shown on this map

8 AUG 1991



ROAD CLASSIFICATION
Heavy-duty ——— Light-duty ———
Medium-duty - - - - - Unimproved dirt - - - - -
State Route ○

TENALQUOT PRAIRIE, WASH.
46122-H6-TF-024
1959
PHOTOREVISED 1968
DMA 1477 1 NW-SERIES V891
Revisions shown in purple compiled by the Geological Survey from
aerial photographs taken 1968. This information not field checked

