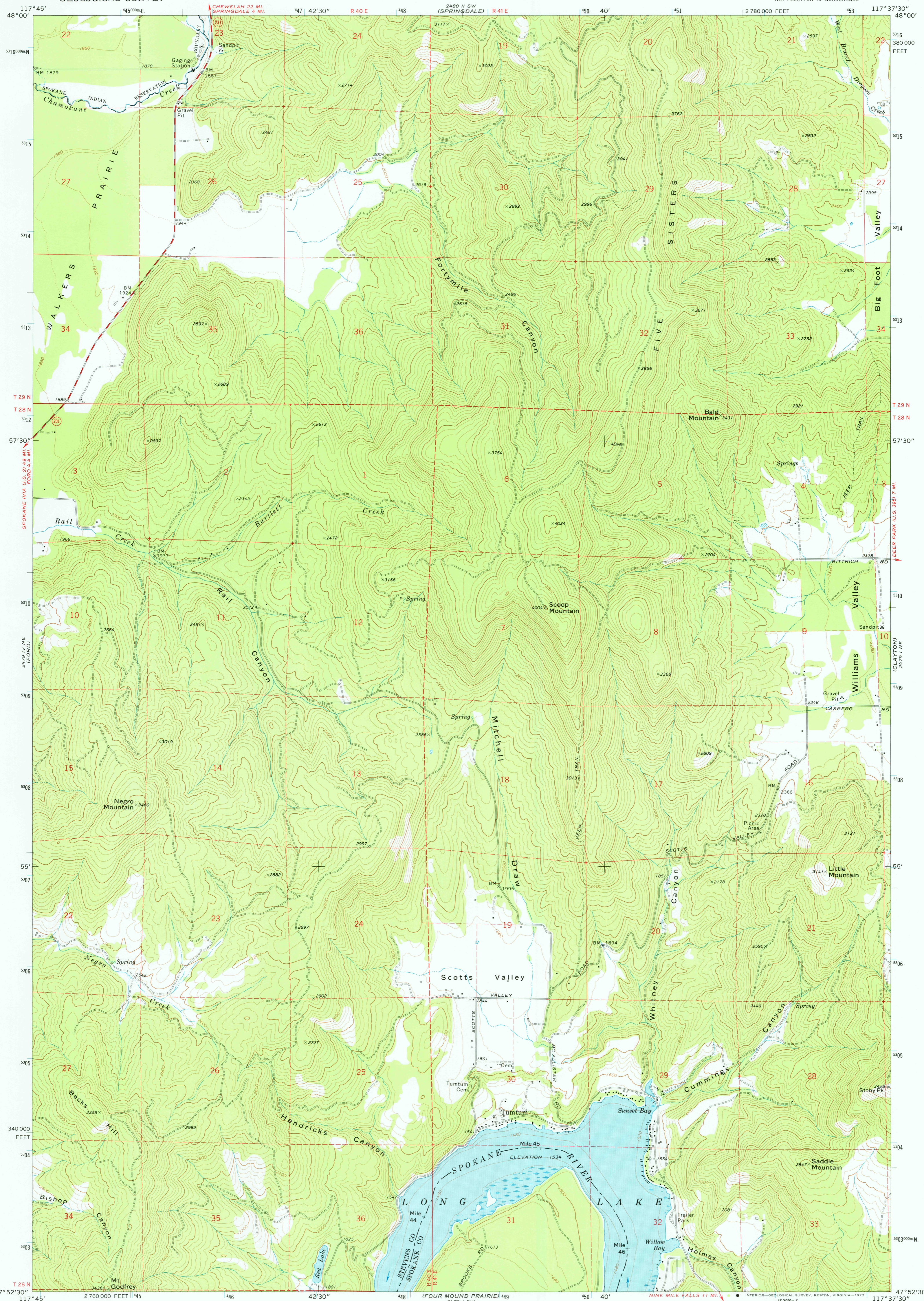


UNITED STATES
DEPARTMENT OF THE INTERIOR
GEOLOGICAL SURVEY

TUMTUM QUADRANGLE
WASHINGTON
7.5 MINUTE SERIES (TOPOGRAPHIC)
NW/4 CLAYTON 15' QUADRANGLE



Mapped, edited, and published by the Geological Survey

Control by USGS and NOS/NOAA

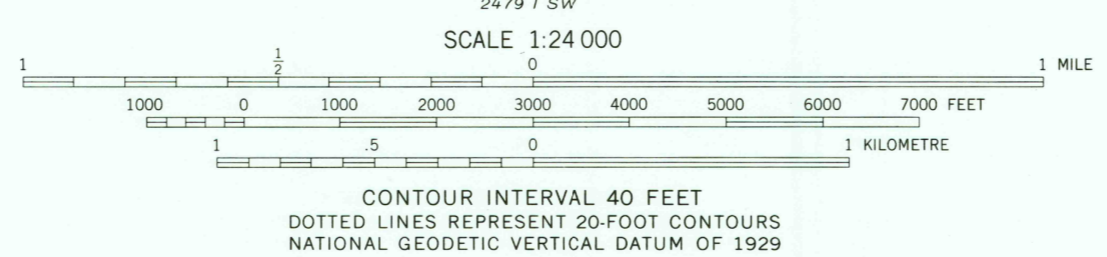
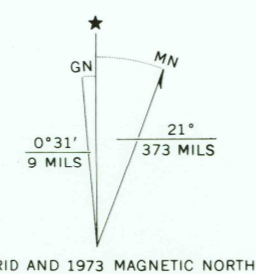
Topography by photogrammetric methods from aerial photographs taken 1972. Field checked 1973

Underwater contours by Washington Water Power Co.

Projection and 10,000-foot grid ticks: Washington coordinate system, north zone (Lambert conformal conic)

1000-metre Universal Transverse Mercator grid ticks, zone 11, shown in blue. 1927 North American datum

Fine red dashed lines indicate selected fence lines



ROAD CLASSIFICATION

| | |
|---------------------------------|---|
| Primary highway, hard surface | Light-duty road, hard or improved surface |
| Secondary highway, hard surface | Unimproved road |
| Interstate Route | U. S. Route |
| | State Route |

TUMTUM, WASH.
NW/4 CLAYTON 15' QUADRANGLE
N4752.5-W11737.5/7.5

USGS
Historical File
Topographic Division
1973
AMS 2479 I NW-SERIES V891

CONTOUR INTERVAL 40 FEET
DOTTED LINES REPRESENT 20-FOOT CONTOURS
NATIONAL GEODETIC VERTICAL DATUM OF 1929

THIS MAP COMPLIES WITH NATIONAL MAP ACCURACY STANDARDS
FOR SALE BY U. S. GEOLOGICAL SURVEY, DENVER, COLORADO 80225, OR RESTON, VIRGINIA 22092
A FOLDER DESCRIBING TOPOGRAPHIC MAPS AND SYMBOLS IS AVAILABLE ON REQUEST

APR 13 1977

2800