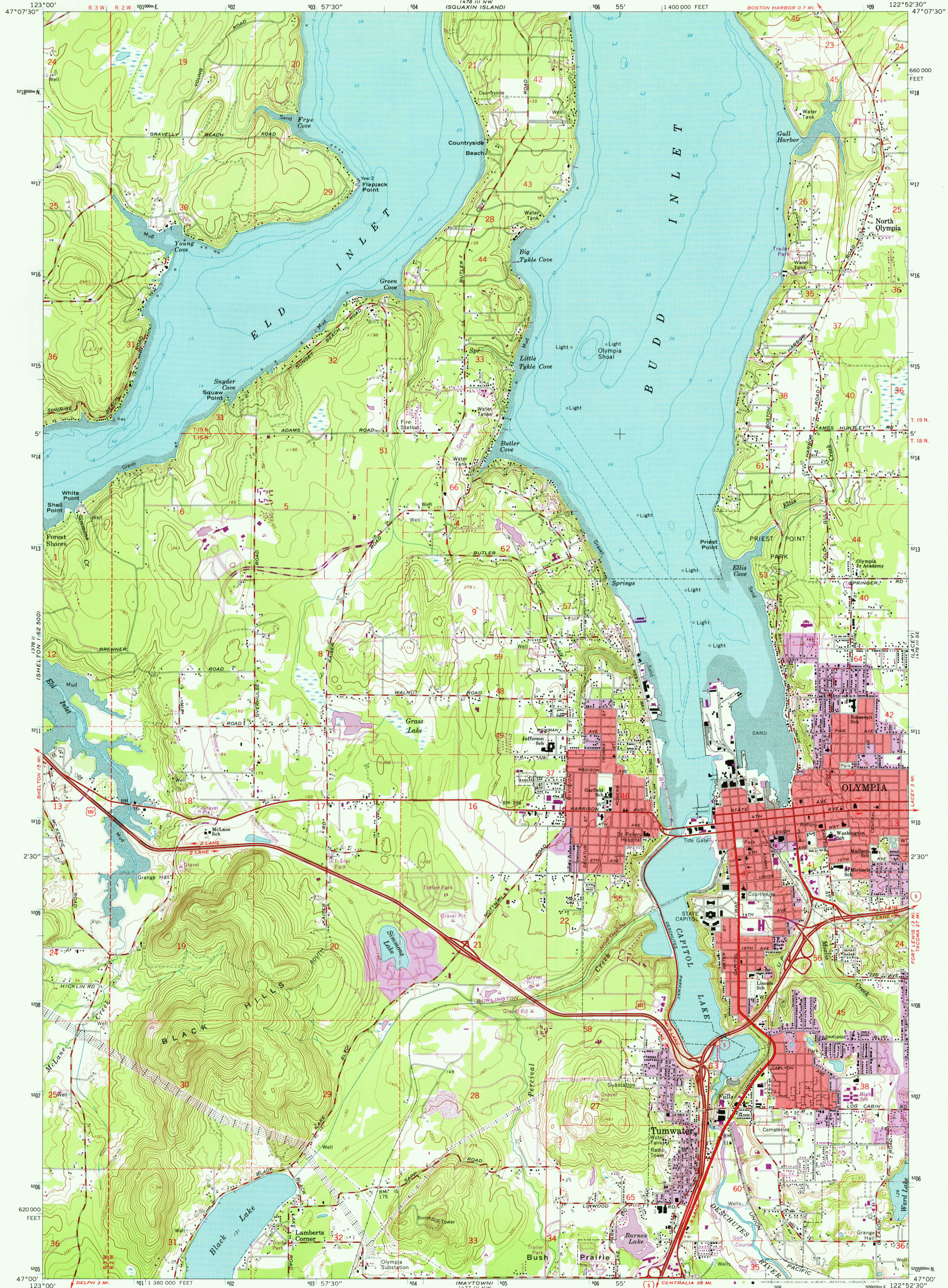
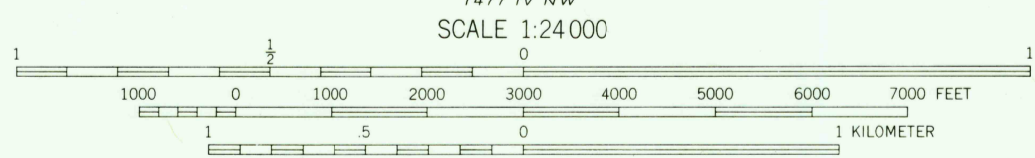
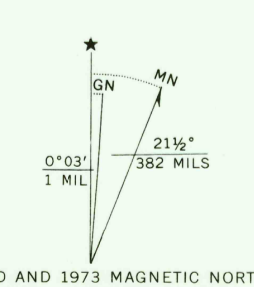


UNITED STATES
DEPARTMENT OF THE INTERIOR
GEOLOGICAL SURVEY

TUMWATER QUADRANGLE
WASHINGTON—THURSTON CO.
7.5 MINUTE SERIES (TOPOGRAPHIC)
SW/4 OLYMPIA 15' QUADRANGLE



Mapped by the Army Map Service
Published for civil use by the Geological Survey
Control by USGS, USC&GS, and USCE
Topography by photogrammetric methods from aerial
photographs taken 1959. Field checked 1959
Selected hydrographic data compiled from USC&GS
Chart 6462 (1947) and hydrographic surveys (1936)
This information is not intended for navigational purposes
Polyconic projection. 1927 North American datum
10,000-foot grid based on Washington coordinate system,
south zone
1000-meter Universal Transverse Mercator grid ticks,
zone 10, shown in blue
Red tint indicates areas in which only landmark buildings are shown
Land lines added and minor corrections by USGS 1965



SCALE 1:24,000
CONTOUR INTERVAL 20' FEET
DOTTED LINES REPRESENT 10-FOOT CONTOURS
NATIONAL GEODETIC VERTICAL DATUM OF 1929
DEPTH CURVES AND SOUNDINGS IN FEET—DATUM IS MEAN LOWER LOW WATER
SHORELINE SHOWN REPRESENTS THE APPROXIMATE LINE OF MEAN HIGH WATER
THE MEAN RANGE OF TIDE IS APPROXIMATELY 10 FEET



ROAD CLASSIFICATION
Heavy-duty ——— Light-duty ———
Medium-duty ——— Unimproved dirt ———
Interstate Route (Red circle with number) U. S. Route (Red line with number)

TUMWATER, WASH.
SW/4 OLYMPIA 15' QUADRANGLE
N4700—W12252.5/7.5

MAR 29 1976

THIS MAP COMPLIES WITH NATIONAL MAP ACCURACY STANDARDS
FOR SALE BY U. S. GEOLOGICAL SURVEY, DENVER, COLORADO 80225, OR RESTON, VIRGINIA 22092
A FOLDER DESCRIBING TOPOGRAPHIC MAPS AND SYMBOLS IS AVAILABLE ON REQUEST

Revisions shown in purple compiled by the Geological Survey
from aerial photographs taken 1968 and 1973.
This information not field checked
Purple tint indicates extension of urban areas

1959
PHOTOREVISED 1968 AND 1973
AMS 1478 III SW—SERIES V891

USGS
Historical File
Topographic Division