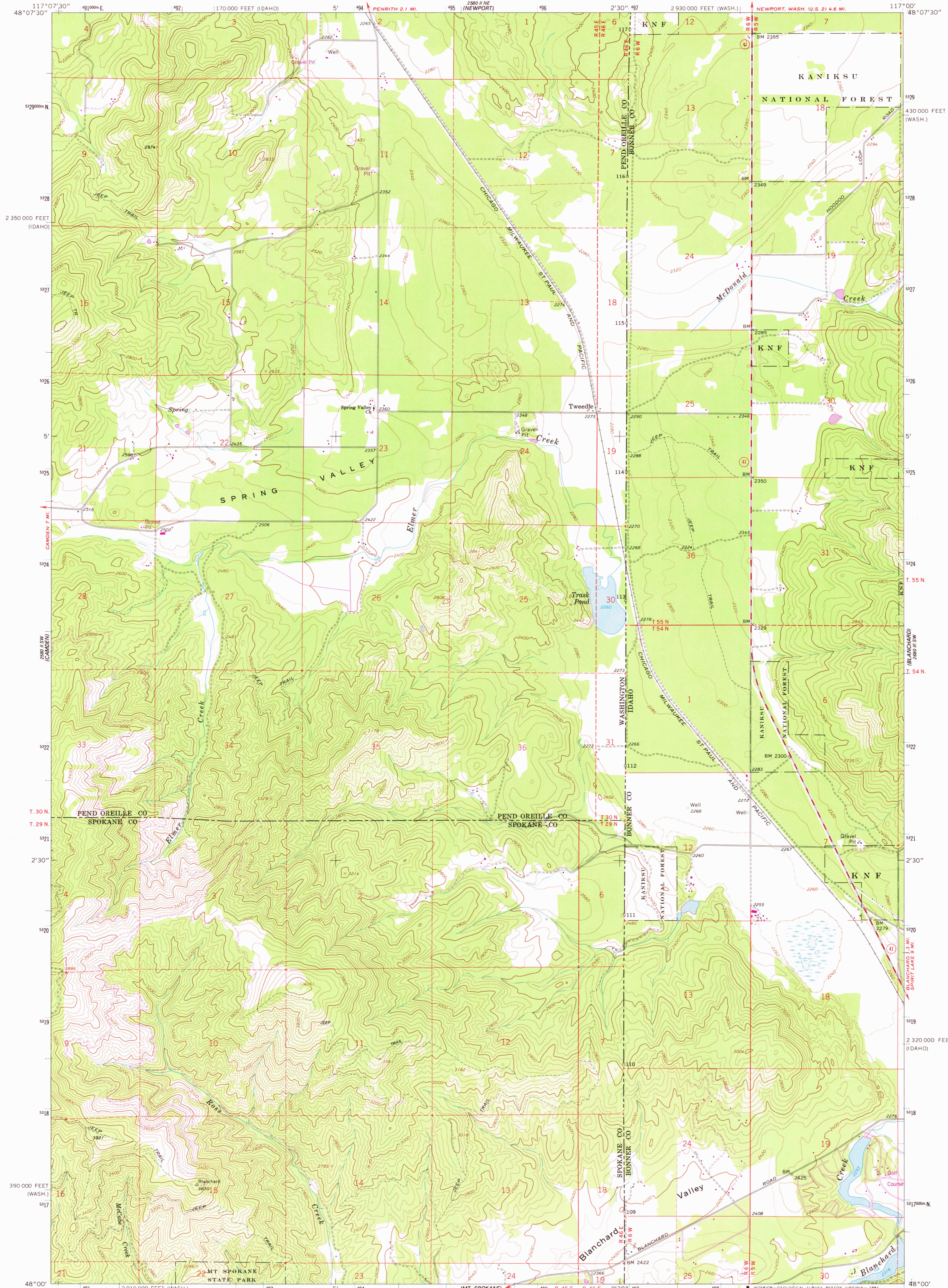


UNITED STATES  
DEPARTMENT OF THE INTERIOR  
GEOLOGICAL SURVEY

TWEEDIE QUADRANGLE  
WASHINGTON-IDAHO  
7.5 MINUTE SERIES (TOPOGRAPHIC)



Mapped, edited, and published by the Geological Survey

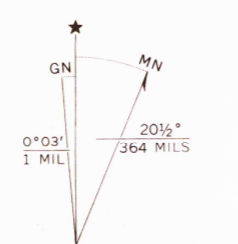
Control by USGS and NOS/NOAA

Topography by photogrammetric methods from aerial photographs taken 1965. Field checked 1968

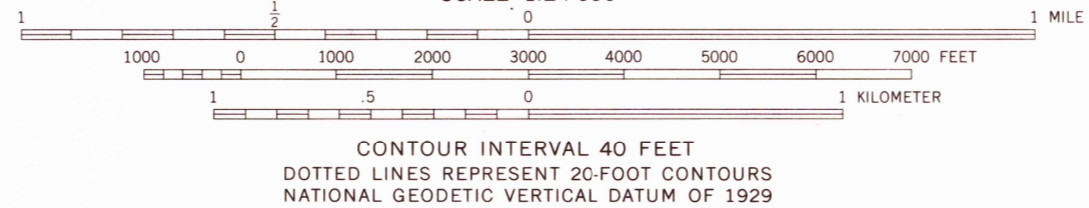
Polyconic projection. 1927 North American datum 10,000-foot grids based on Washington coordinate system, north zone and Idaho coordinate system, west zone 1000-meter Universal Transverse Mercator grid ticks, zone 11, shown in blue

To place on the predicted North American Datum 1983 move the projection lines 14 meters north and 78 meters east as shown by dashed corner ticks

There may be private inholdings within the boundaries of the National or State reservations shown on this map  
Fine red dashed lines indicate selected fence lines



UTM GRID AND 1980 MAGNETIC NORTH DECLINATION AT CENTER OF SHEET



CONTOUR INTERVAL 40 FEET  
DOTTED LINES REPRESENT 20-FOOT CONTOURS  
NATIONAL GEODETIC VERTICAL DATUM OF 1929

THIS MAP COMPLIES WITH NATIONAL MAP ACCURACY STANDARDS  
FOR SALE BY U.S. GEOLOGICAL SURVEY, DENVER, COLORADO 80225, OR RESTON, VIRGINIA 22092  
A FOLDER DESCRIBING TOPOGRAPHIC MAPS AND SYMBOLS IS AVAILABLE ON REQUEST

ROAD CLASSIFICATION

- Secondary highway, all weather. Light-duty road, all weather, improved surface.
- Unimproved road, fair or dry weather.
- State Route



QUADRANGLE LOCATION

TWEEDIE, WASH.-IDAHO  
N4800-W11700/7.5

1968  
PHOTOREVISED 1980  
DMA 2580 II SE-SERIES V891

USGS  
Historical File  
National Mapping Div.

MAR 12 1981

2300