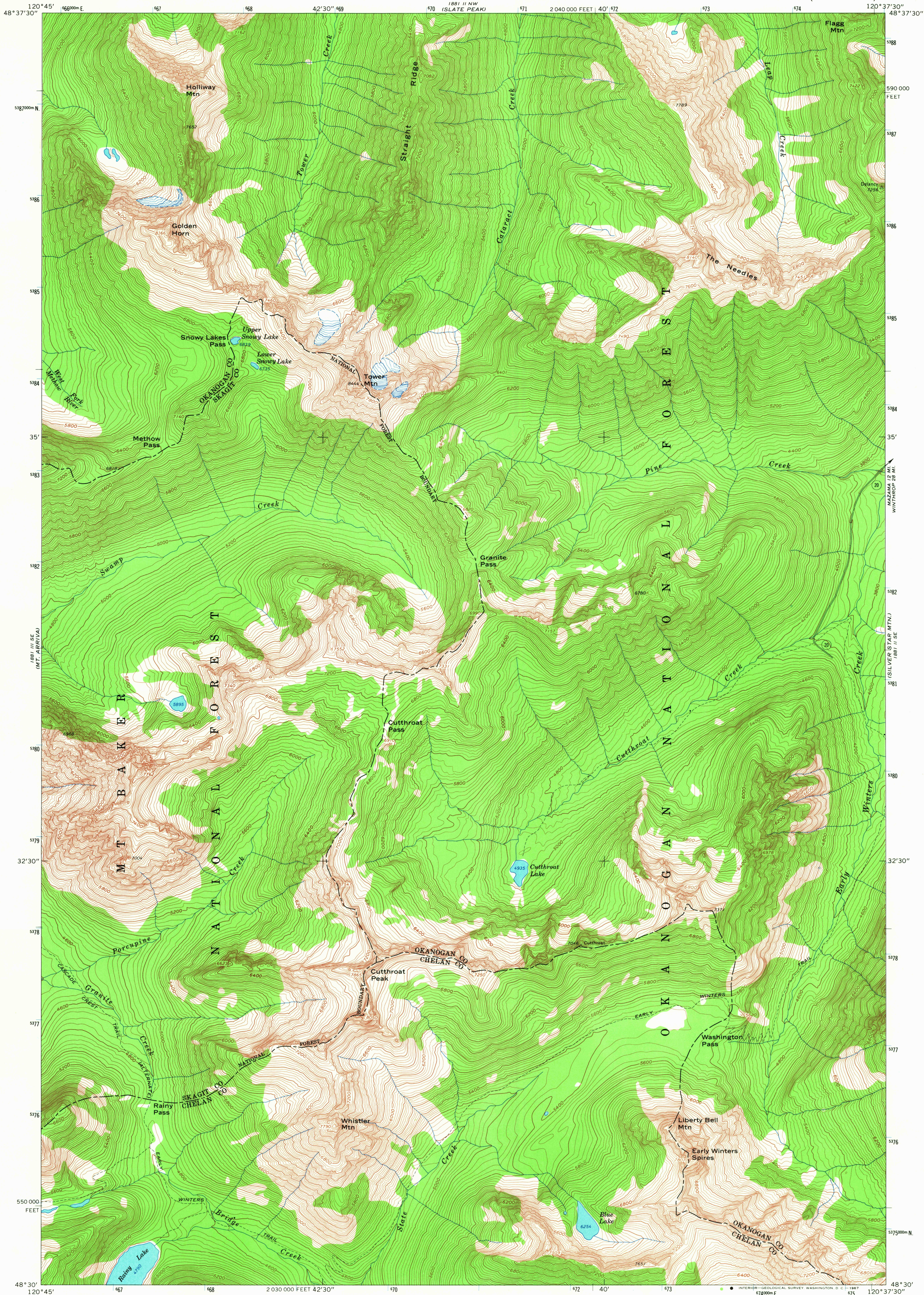
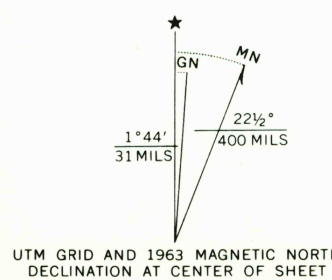


UNITED STATES  
DEPARTMENT OF THE INTERIOR  
GEOLOGICAL SURVEY

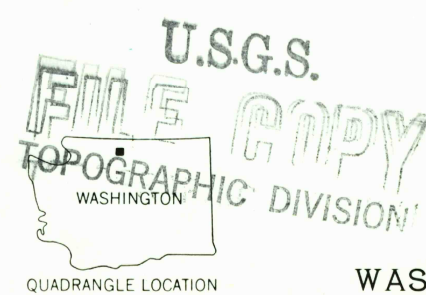
WASHINGTON PASS QUADRANGLE  
WASHINGTON  
7.5 MINUTE SERIES (TOPOGRAPHIC)



Mapped, edited, and published by the Geological Survey  
Control by USGS and USC&GS  
Topography by photogrammetric methods from aerial  
photographs taken 1958. Field checked 1963  
Polyconic projection. 1927 North American datum  
10,000-foot grid based on Washington coordinate system,  
north zone  
1000-meter Universal Transverse Mercator grid ticks,  
zone 10, shown in blue  
Where omitted, land lines have not been established



SCALE 1:24,000  
1 MILE  
1 KILOMETER  
CONTOUR INTERVAL 40 FEET  
DATUM IS MEAN SEA LEVEL



ROAD CLASSIFICATION  
Light duty  
○ State Route

WASHINGTON PASS, WASH.  
N4830-W12037.5/7.5

QUADRANGLE LOCATION  
USGS  
Historical File  
Topographic Division  
1963  
AMS 1881 II SW-SERIES V691

U.S.G.S.  
TOPOGRAPHIC DIVISION

7055  
JAN 4 1968