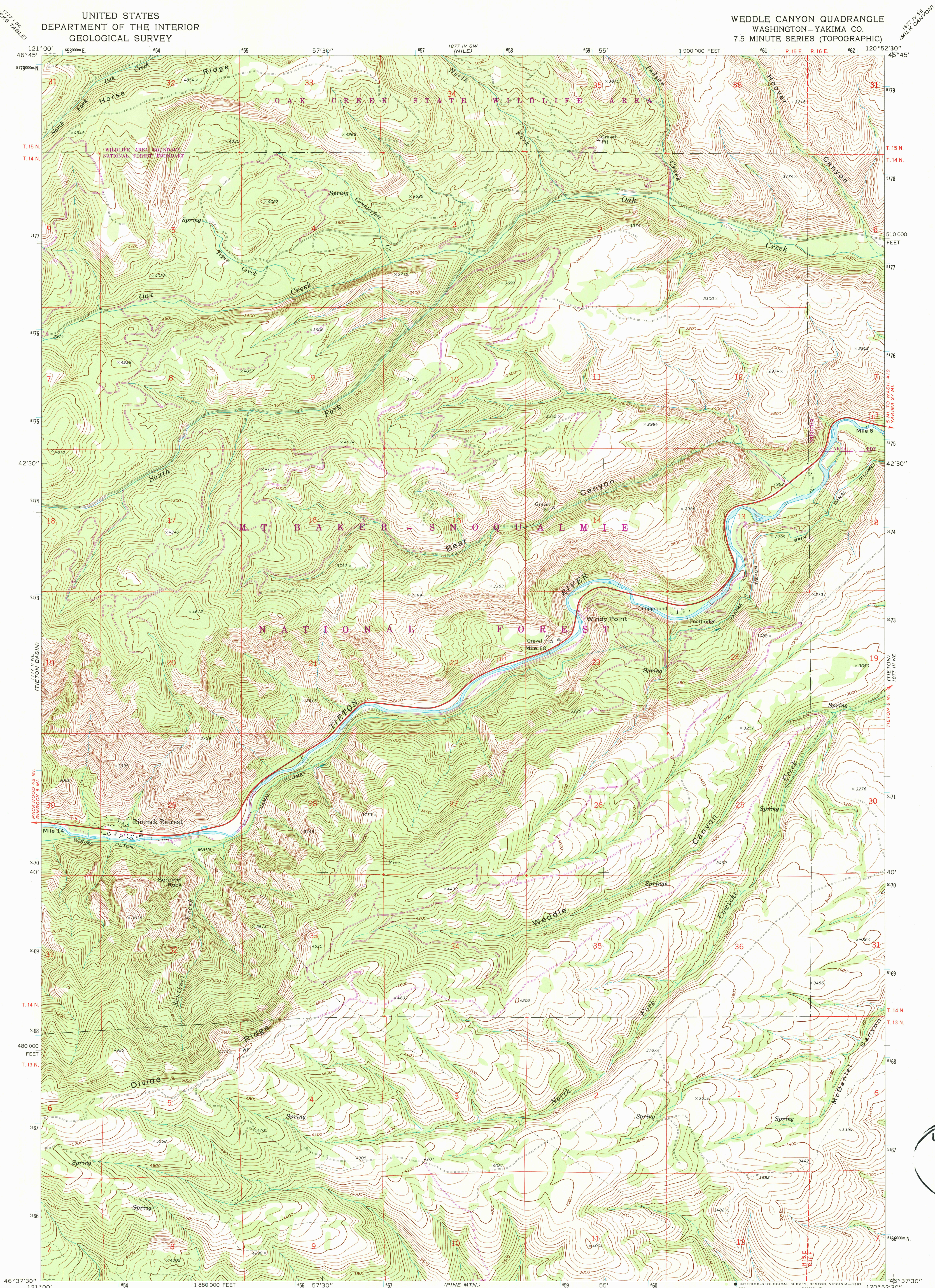


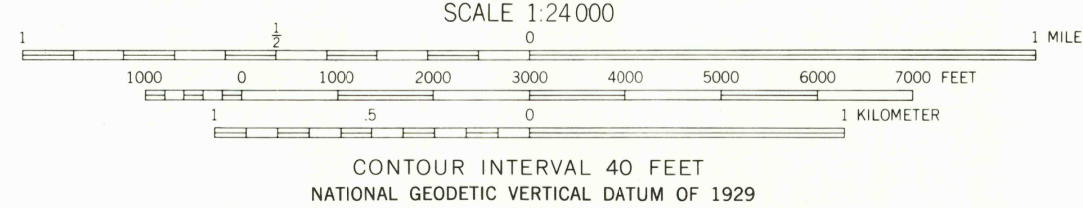
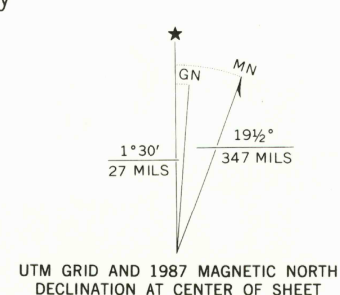
UNITED STATES
DEPARTMENT OF THE INTERIOR
GEOLOGICAL SURVEY

WEDDLE CANYON QUADRANGLE
WASHINGTON-YAKIMA CO.
7.5 MINUTE SERIES (TOPOGRAPHIC)



USGS NMD HISTORICAL MAP
DEC 17 1987
REC'D FILE COPY

Mapped, edited, and published by the Geological Survey
Control by USGS and NOS/NOAA
Topography by photogrammetric methods from aerial
photographs taken 1970. Field checked 1971
Projection and 10,000-foot grid ticks: Washington coordinate
system, south zone (Lambert conformal conic)
1000-meter Universal Transverse Mercator grid ticks,
zone 10, shown in blue. 1927 North American Datum
To place on the predicted North American Datum 1983
move the projection lines 21 meters north and
90 meters east as shown by dashed corner ticks
There may be private inholdings within the boundaries
of the National or State reservations shown on this map



THIS MAP COMPLIES WITH NATIONAL MAP ACCURACY STANDARDS
FOR SALE BY U.S. GEOLOGICAL SURVEY
DENVER, COLORADO 80225, OR RESTON, VIRGINIA 22092
A FOLDER DESCRIBING TOPOGRAPHIC MAPS AND SYMBOLS IS AVAILABLE ON REQUEST



ROAD CLASSIFICATION
Primary highway, hard surface
Secondary highway, hard surface
Unimproved road
Interstate Route
U. S. Route
State Route
Light-duty road, hard or improved surface
Unimproved road

WEDDLE CANYON, WASH.
46120-F8-TF-024

1971
PHOTOREVISED 1987
DMA 1877 III NW—SERIES V891

Revisions shown in purple compiled from aerial photographs
taken 1981 and other source data. Partial field check
by U. S. Forest Service. Map edited 1987