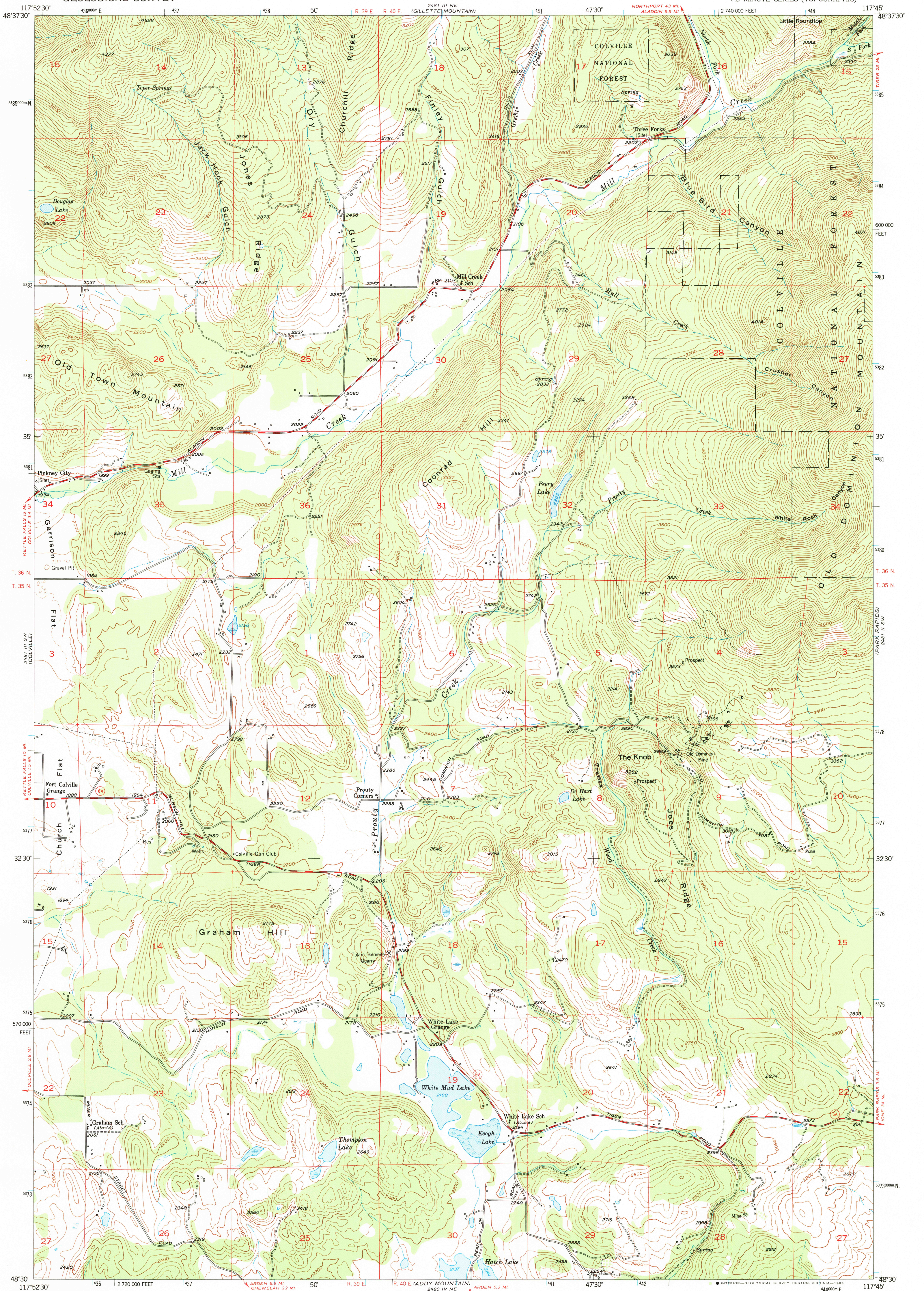


2881 III NW
(CLOD VALLEY)

UNITED STATES
DEPARTMENT OF THE INTERIOR
GEOLOGICAL SURVEY

WHITE MUD LAKE QUADRANGLE
WASHINGTON-STEVENS CO.
7.5 MINUTE SERIES (TOPOGRAPHIC)

2881 III NW
(ALADDIN)



2880 IV NW
(ARDEN)

Mapped, edited, and published by the Geological Survey

Control by USGS and USC&GS

Topography from aerial photographs by multiplex methods

Aerial photographs taken 1946. Field check 1952

Polyconic projection. 1927 North American datum

10,000-foot grid based on Washington coordinate system, north zone

Dashed land lines indicate approximate locations

Unchecked elevations are shown in brown

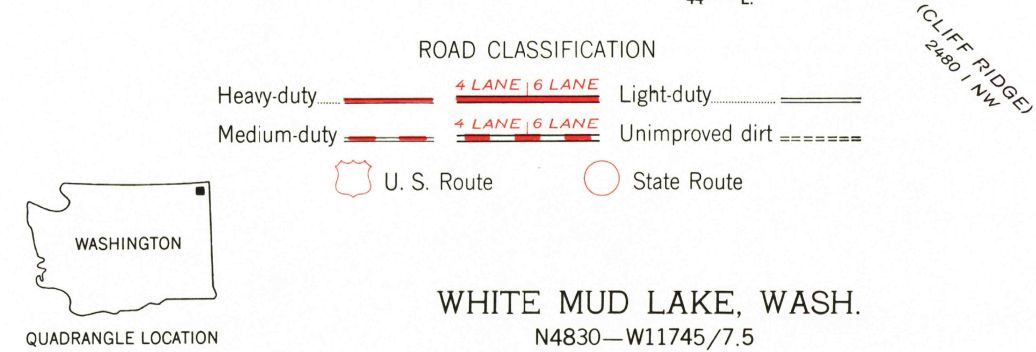
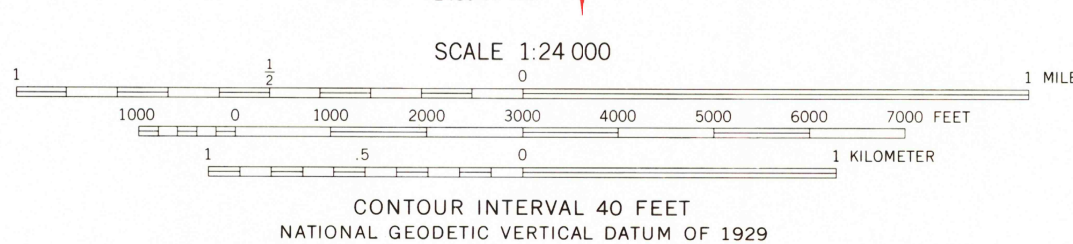
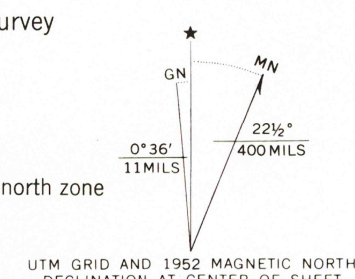
1000-meter Universal Transverse Mercator grid ticks,

zone 11, shown in blue

To place on the predicted North American Datum 1983

move the projection lines 15 meters north and

80 meters east as shown by dashed corner ticks



WASHINGTON

QUADRANGLE LOCATION

WHITE MUD LAKE, WASH.
N4830-W11745/7.5

1952
PHOTOINSPECTED 1979
DMA 2481 III SE-SERIES V891

Map photoinspected 1979
No major culture or drainage changes observed

RETURN TO:
USGS AND HISTORICAL MAP ARCHIVES