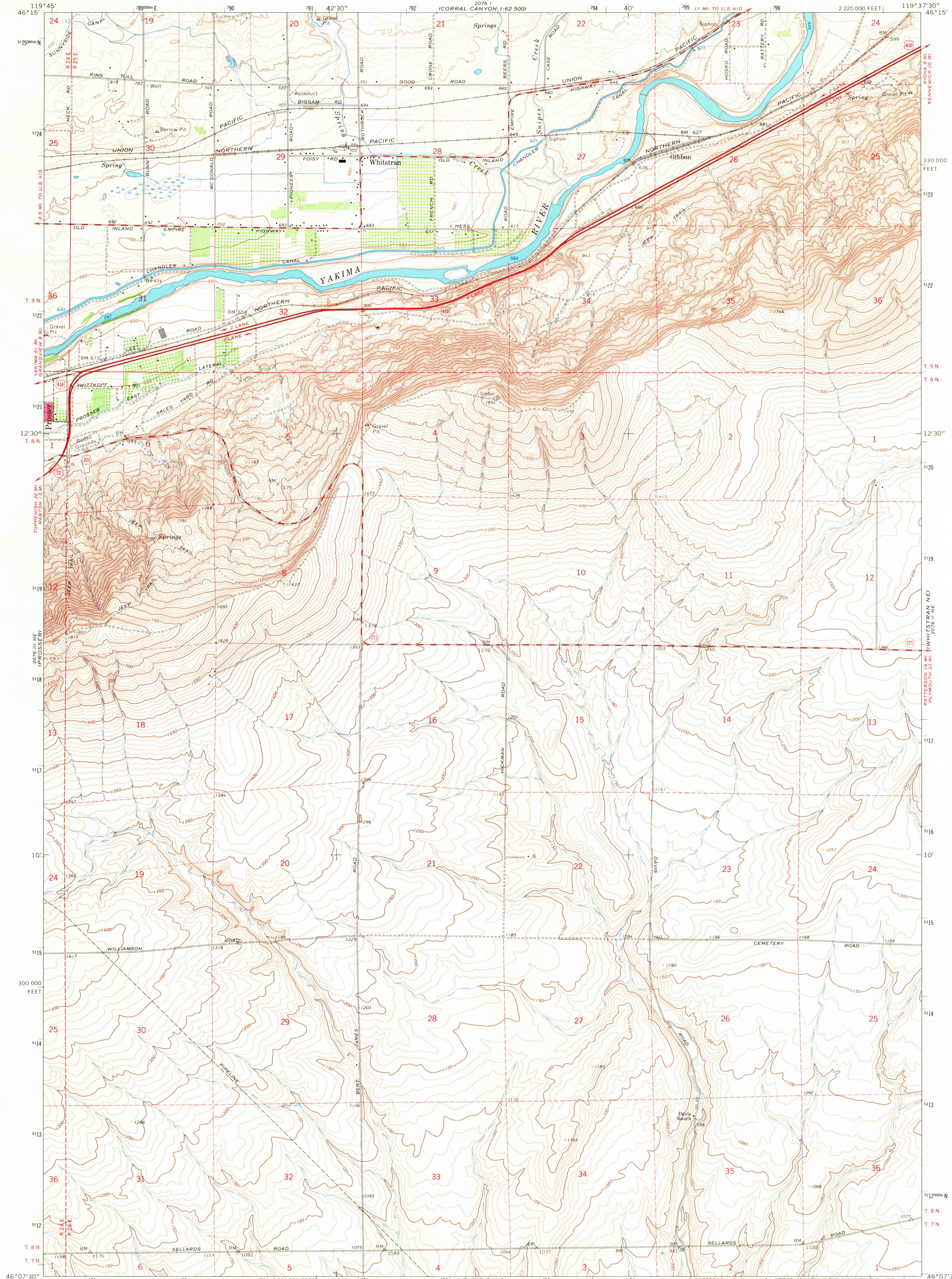


UNITED STATES  
DEPARTMENT OF THE INTERIOR  
GEOLOGICAL SURVEY

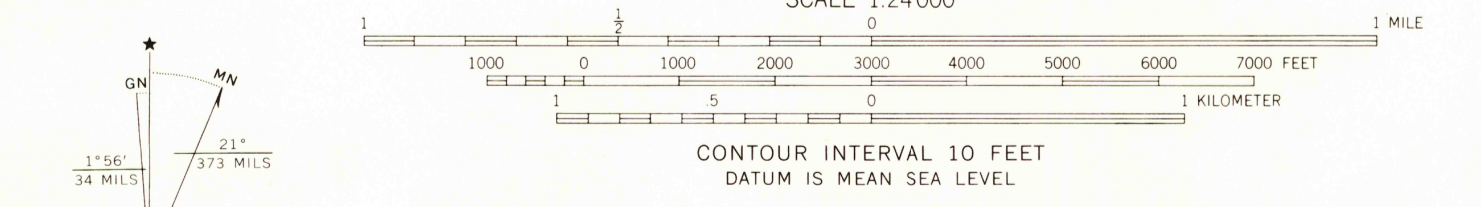
WHITSTRAN QUADRANGLE  
WASHINGTON—BENTON CO.  
7.5 MINUTE SERIES (TOPOGRAPHIC)  
NW/4 WHITSTRAN 15' QUADRANGLE

2076 I  
CORRAL CANYON  
1:62,500

2076 I  
CORRAL CANYON  
1:62,500



Mapped, edited, and published by the Geological Survey  
Control by USGS and USC&GS  
Topography by photogrammetric methods from aerial  
photographs taken 1963. Field checked 1965  
Polyconic projection. 1927 North American datum  
10,000-foot grid based on Washington coordinate system,  
south zone  
1000-meter Universal Transverse Mercator grid ticks,  
zone 11, shown in blue  
Red tint indicates areas in which only  
landmark buildings are shown  
Fine red dashed lines indicate selected fence lines



SCALE 1:24,000  
CONTOUR INTERVAL 10 FEET  
DATUM IS MEAN SEA LEVEL

ROAD CLASSIFICATION

Heavy-duty	Light-duty
Medium-duty	Unimproved dirt
U.S. Route	State Route

U.S.G.S. TOPOGRAPHIC DIVISION  
WHITSTRAN, WASH.  
NW/4 WHITSTRAN 15' QUADRANGLE  
N4607.5—W11937.5/7.5  
1965  
AMS 2076 II NW—SERIES V891

3190  
USGS  
Historical File  
Topographic Division