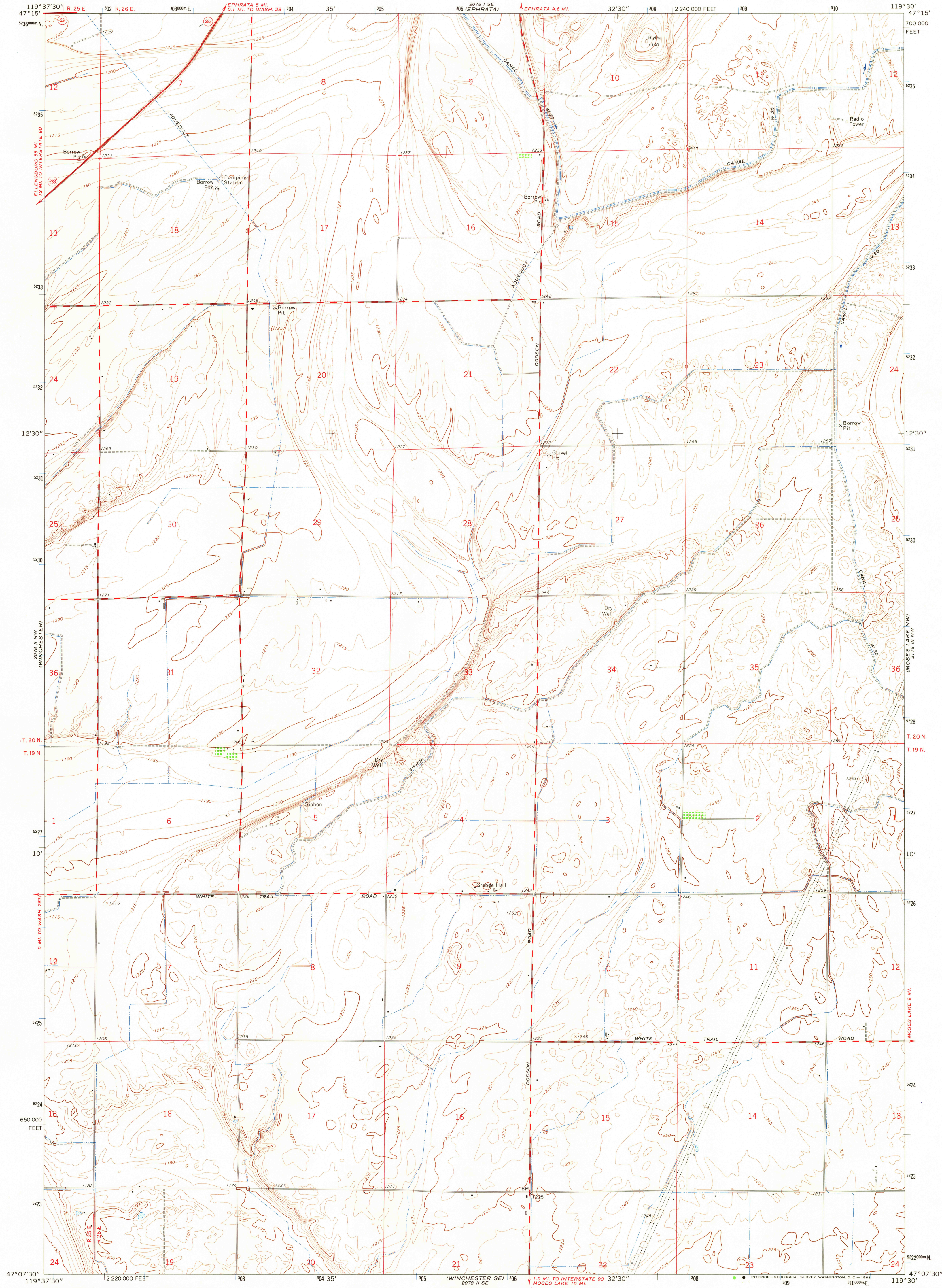
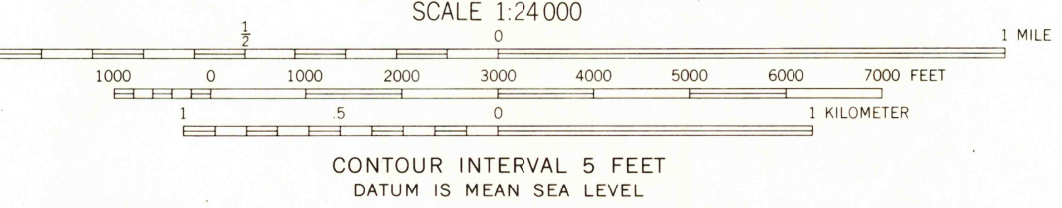
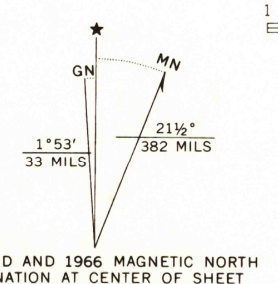


UNITED STATES
DEPARTMENT OF THE INTERIOR
GEOLOGICAL SURVEY

WINCHESTER NE QUADRANGLE
WASHINGTON—GRANT CO.
7.5 MINUTE SERIES (TOPOGRAPHIC)
NE/4 WINCHESTER 15' QUADRANGLE



Mapped, edited, and published by the Geological Survey
Control by USGS, USC&GS, USCE, and U. S. Bureau of Reclamation
Topography from planetable surveys by USBR 1937
Culture and drainage compiled from aerial photographs
taken 1954. Field checked 1956. Revised from aerial
photographs taken 1964. Field checked 1966
Polyconic projection. 1927 North American datum
10,000-foot grid based on Washington coordinate system,
south zone
1000-meter Universal Transverse Mercator grid ticks,
zone 11, shown in blue



CONTOUR INTERVAL 5 FEET
DATUM IS MEAN SEA LEVEL

ROAD CLASSIFICATION
Heavy-duty ——— Light-duty ———
Medium-duty - - - - - Unimproved dirt - - - - -
○ Slate Route

THIS MAP COMPLIES WITH NATIONAL MAP ACCURACY STANDARDS
FOR SALE BY U. S. GEOLOGICAL SURVEY, DENVER, COLORADO 80225, OR WASHINGTON, D. C. 20542
A FOLDER DESCRIBING TOPOGRAPHIC MAPS AND SYMBOLS IS AVAILABLE ON REQUEST



WINCHESTER NE, WASH.
NE/4 WINCHESTER 15' QUADRANGLE
N4707.5—W11930/7.5

1966
AMS 2078 II NE—SERIES V891
USGS
Historical File
Topographic Division

2750

JUN 7 1968