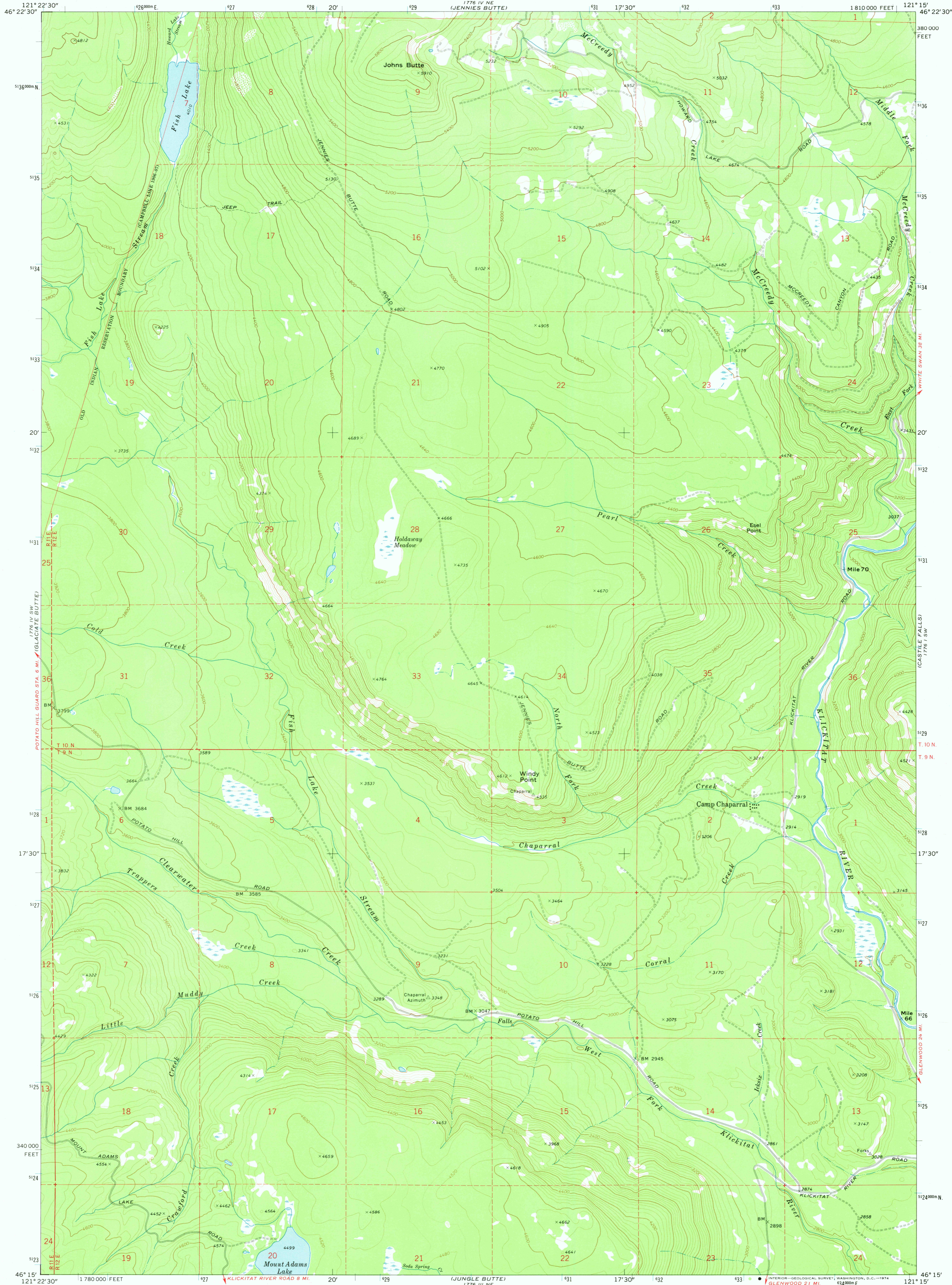
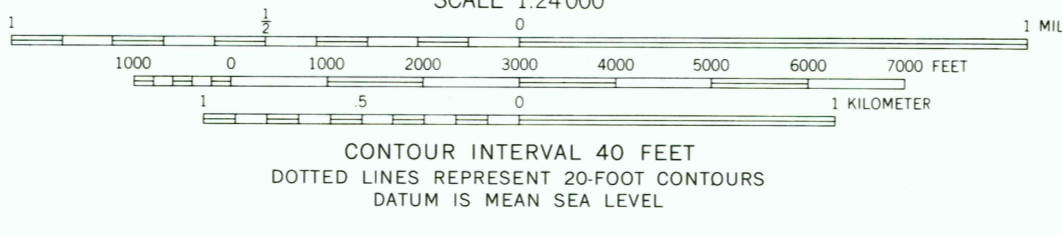
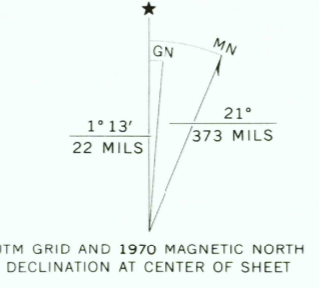


UNITED STATES
DEPARTMENT OF THE INTERIOR
GEOLOGICAL SURVEY

WINDY POINT QUADRANGLE
WASHINGTON—YAKIMA CO.
7.5 MINUTE SERIES (TOPOGRAPHIC)



Mapped, edited, and published by the Geological Survey
Control by USGS and USC&GS
Topography by photogrammetric methods from aerial photographs taken 1969. Field checked 1970
Projection and 10,000-foot grid ticks: Washington coordinate system, south zone (Lambert conformal conic)
1000-meter Universal Transverse Mercator grid ticks, zone 10, shown in blue. 1927 North American datum
Where omitted, land lines have not been established
Entire area lies within the boundary of the Yakima Indian Reservation



ROAD CLASSIFICATION

| | |
|---------------------------------|---|
| Primary highway, hard surface | Light-duty road, hard or improved surface |
| Secondary highway, hard surface | Unimproved road |
| Interstate Route | U. S. Route |
| | State Route |

FOR SALE BY U. S. GEOLOGICAL SURVEY, DENVER, COLORADO 80225, OR WASHINGTON, D. C. 20242
A FOLDER DESCRIBING TOPOGRAPHIC MAPS AND SYMBOLS IS AVAILABLE ON REQUEST

USGS HISTORICAL FILE TOPOGRAPHIC DIVISION
WINDY POINT, WASH.
N4615-W12115/7.5
1970
AMS 1776 IV SE-SERIES V891

JAN 20 1974
3375