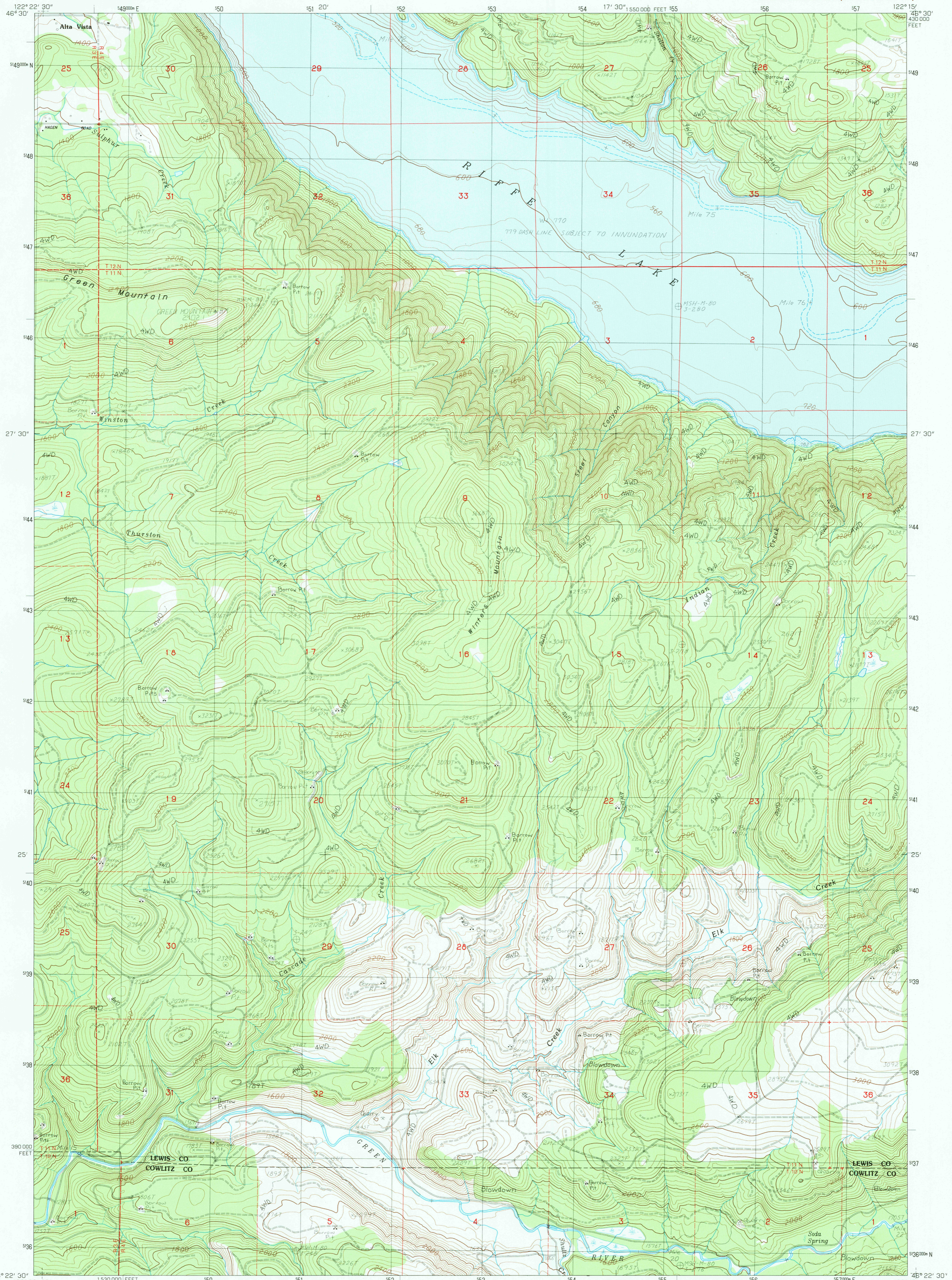


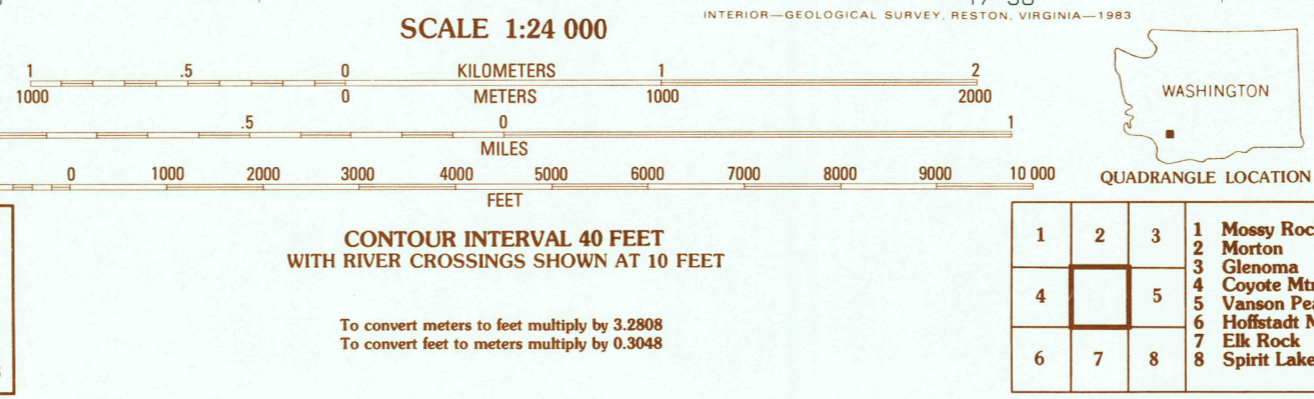
UNITED STATES  
DEPARTMENT OF THE INTERIOR  
GEOLOGICAL SURVEY

WINTERS MTN. QUADRANGLE  
WASHINGTON  
7.5 MINUTE SERIES (TOPOGRAPHIC)



PRODUCED BY THE UNITED STATES GEOLOGICAL SURVEY  
CONTROL BY: 1865, NOS/NRA  
COMPILED FROM AERIAL PHOTOGRAPHS TAKEN: 1980  
FIELD CHECKED: 1981. MAP EDITED: CONFORMAL CONIC  
PROJECTION: LAMBERT CONFORMAL CONIC  
GRID: 1000-METER UNIVERSAL TRANSVERSE MERCATOR, ZONE 10  
10,000-FOOT STATE GRID TICKS... WASHINGTON, SOUTH ZONE  
UTM GRID DECLINATION: 1983  
1980 MAGNETIC NORTH DECLINATION: 20°00' EAST  
VERTICAL DATUM: NATIONAL GEODETIC DATUM OF 1929  
HORIZONTAL DATUM: 1927 NORTH AMERICAN DATUM  
To place on the predicted North American Datum of 1983,  
move the projection lines as shown by dashed corner ticks  
(22 meters north / 93 meters east)  
There may be private inholdings within the boundaries of any  
Federal and State Reservations shown on this map  
Areas covered by dashed light-blue pattern  
are subject to controlled inundation to 779 feet

**PROVISIONAL MAP**  
Produced from original  
manuscript drawings. Informa-  
tion shown as of date of  
field check.



ROAD LEGEND

Improved Road.....  
Unimproved Road.....  
Trail.....

Interstate Route U.S. Route State Route

WINTERS MTN., WASH.  
PROVISIONAL EDITION 1983

RETURN TO:  
USGS AND HISTORICAL MAP ARCHIVES

MAR 27 1984