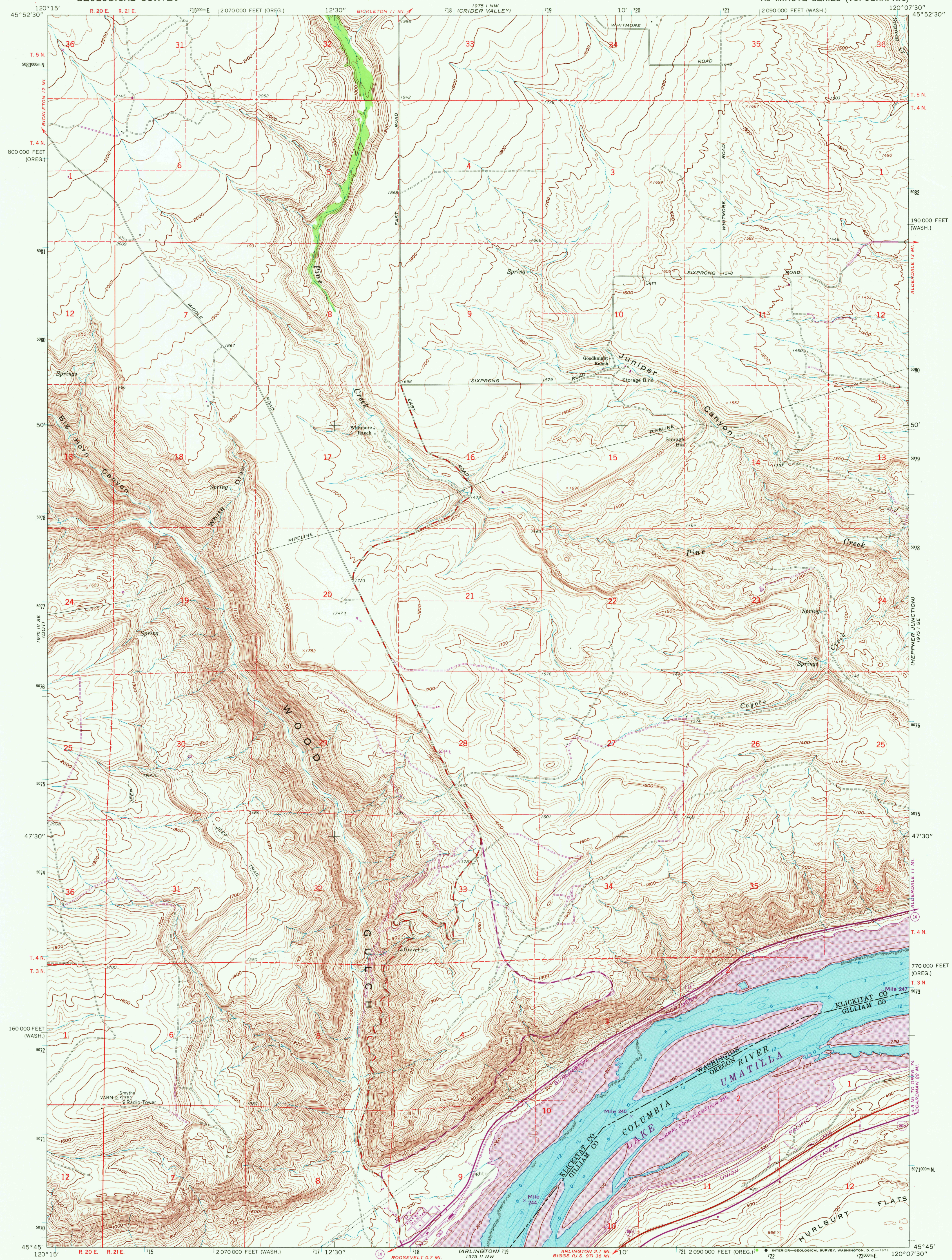
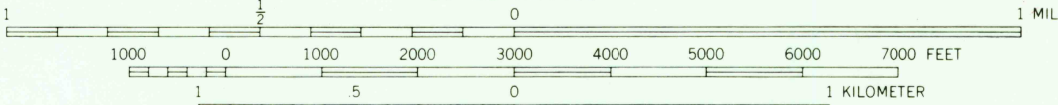


UNITED STATES  
DEPARTMENT OF THE INTERIOR  
GEOLOGICAL SURVEY

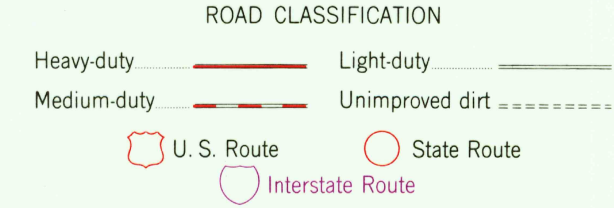
WOOD GULCH QUADRANGLE  
WASHINGTON—OREGON  
7.5 MINUTE SERIES (TOPOGRAPHIC)



Mapped, edited, and published by the Geological Survey  
Control by USGS and USC&GS  
Topography by photogrammetric methods from aerial photographs taken 1958. Field checked 1962  
Selected hydrographic data compiled from USC&GS Chart 6161 (1962)  
This information is not intended for navigational purposes  
Polyconic projection. 1927 North American datum  
10,000-foot grids based on Washington coordinate system, south zone and Oregon coordinate system, north zone  
1000-meter Universal Transverse Mercator grid ticks, zone 10, shown in blue  
Fine red dashed lines indicate selected fence lines  
Revisions shown in purple compiled from aerial photographs taken 1970. This information not field checked



CONTOUR INTERVAL 20 FEET  
DATUM IS MEAN SEA LEVEL  
DEPTH CURVES AND SOUNDINGS IN FEET—DATUM IS LOW WATER  
GRADIENT ESTABLISHED BY CORPS OF ENGINEERS



WOOD GULCH, WASH.—OREG.  
N4545—W12007.5/7.5

1962  
PHOTOREVISED 1970  
AMS 1975 1 SW—SERIES 9891

JAN 21 1972  
3/10  
USGS  
HISTORICAL FILE  
TOPOGRAPHIC DIVISION