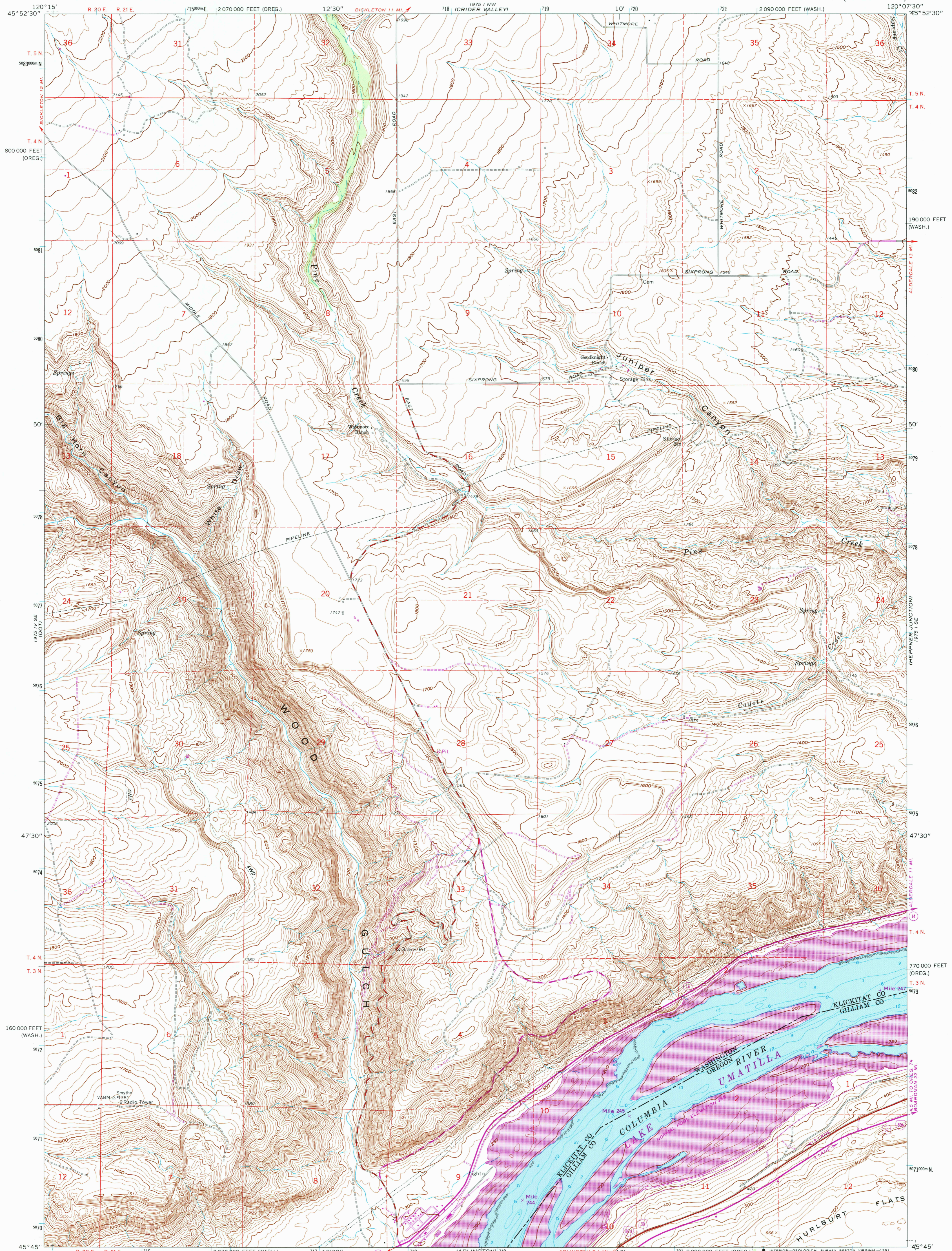


UNITED STATES  
DEPARTMENT OF THE INTERIOR  
GEOLOGICAL SURVEY

WOOD GULCH QUADRANGLE  
WASHINGTON—OREGON  
7.5 MINUTE SERIES (TOPOGRAPHIC)



Mapped, edited, and published by the Geological Survey

Control by USGS and NOS/NOAA

Topography by photogrammetric methods from aerial photographs taken 1958. Field checked 1962

Selected hydrographic data compiled from NOS/NOAA chart 18539. This information is not intended for navigational purposes

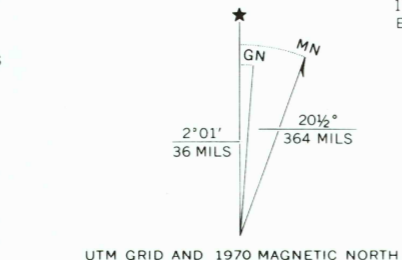
Polyconic projection. 1927 North American Datum

10,000-foot grid based on Washington coordinate system, south zone, and Oregon coordinate system, north zone

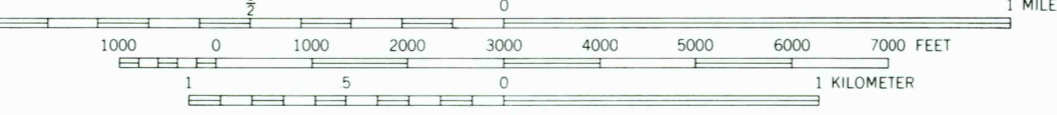
1000-meter Universal Transverse Mercator grid ticks, zone 10, shown in blue

The difference between 1927 North American Datum and North American Datum of 1983 (NAD 83) for 7.5 minute intersections is given in USGS Bulletin 1875. The NAD 83 is shown by dashed corner ticks

Fine red dashed lines indicate selected fence lines



UTM GRID AND 1970 MAGNETIC NORTH DECLINATION AT CENTER OF SHEET



CONTOUR INTERVAL 20 FEET

NATIONAL GEODETIC VERTICAL DATUM OF 1929  
DEPTH CURVES AND SOUNDINGS IN FEET—DATUM IS LOW WATER  
GRADIENT ESTABLISHED BY CORPS OF ENGINEERS

THIS MAP COMPLIES WITH NATIONAL MAP ACCURACY STANDARDS  
FOR SALE BY U.S. GEOLOGICAL SURVEY  
DENVER, COLORADO 80225, OR RESTON, VIRGINIA 22092

A FOLDER DESCRIBING TOPOGRAPHIC MAPS AND SYMBOLS IS AVAILABLE ON REQUEST



QUADRANGLE LOCATION

- ROAD CLASSIFICATION
- Heavy-duty ————
  - Light-duty ————
  - Medium-duty ————
  - Unimproved dirt ————
  - U.S. Route ————
  - State Route ————
  - Interstate Route ————

WOOD GULCH, WASH.—OREG.  
45120-G2-TF-024  
PHOTOINSPECTED 1975  
1962  
PHOTOREVISED 1970  
DMA 1975 1 SW-SERIES V891

Map photoinspected 1975  
No major culture or drainage changes observed

Revisions shown in purple compiled from aerial photographs taken 1970. This information not field checked

