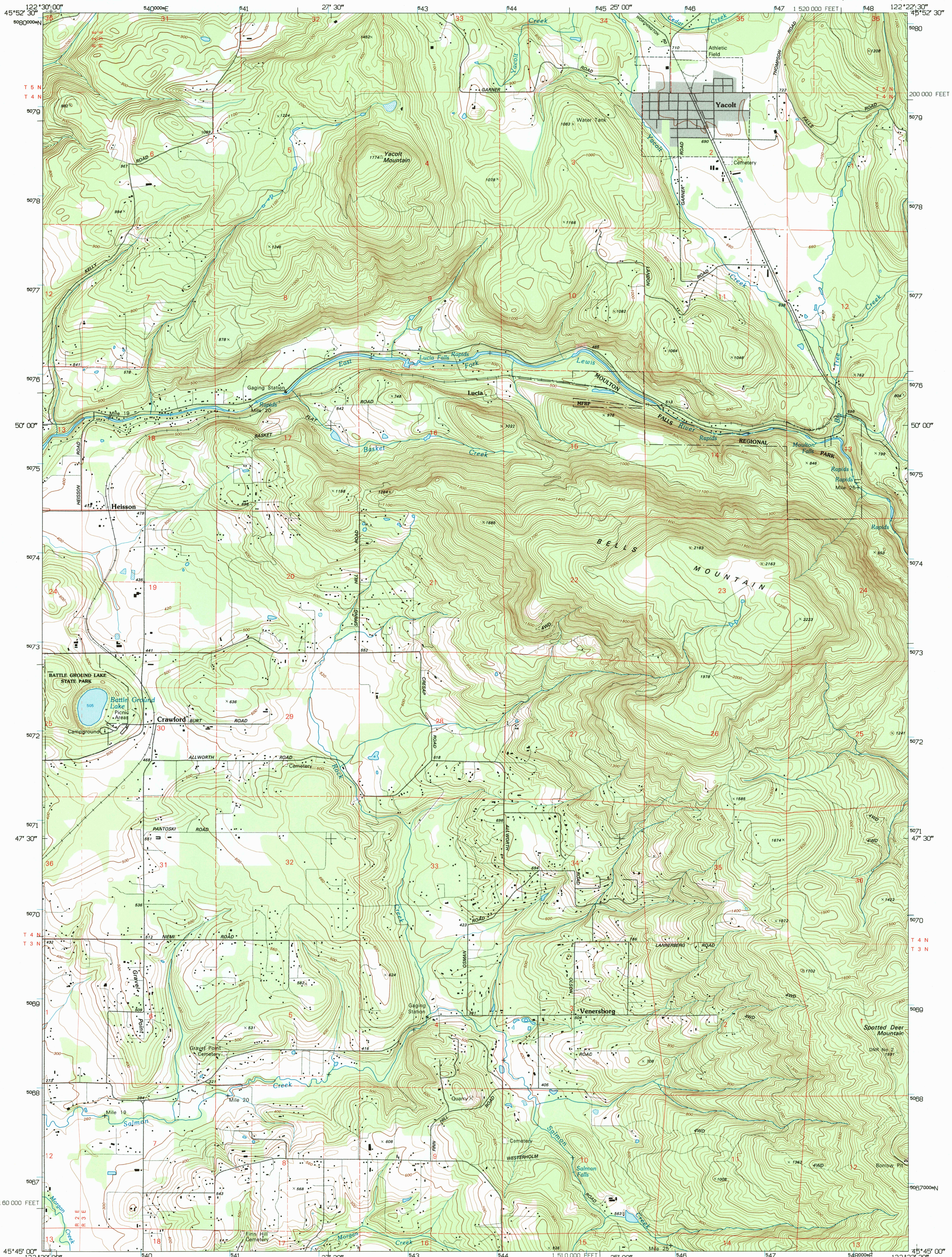
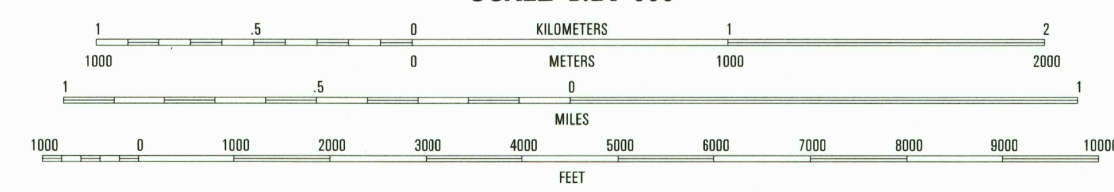
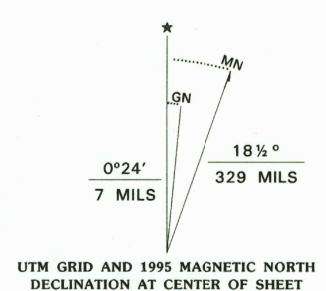


UNITED STATES  
DEPARTMENT OF THE INTERIOR  
GEOLOGICAL SURVEY

YACOLT QUADRANGLE  
WASHINGTON-CLARK CO.  
7.5-MINUTE SERIES (TOPOGRAPHIC)



Produced by the United States Geological Survey  
Control by USGS and NOS/NOAA  
Compiled from imagery dated 1952 and 1970. Revised from  
imagery dated 1990. PLSS and survey control current as  
of 1971. Map edited 1995. Contours and land elevations  
have not been revised and may conflict with other content  
North American Datum of 1927 (NAD 27). Projection and  
blue 1000-meter ticks: Universal Transverse Mercator, zone 10  
10 000-foot ticks: Washington Coordinate System, south zone  
North American Datum of 1983 (NAD 83) is shown by dashed  
corner ticks. The values of the shift between NAD 27  
and NAD 83 for 7.5-minute intersections are obtainable from  
National Geodetic Survey NADCON software.  
There may be private inholdings within the boundaries of  
the National or State reservations shown on this map.  
Fine red dashed lines indicate selected fence and field lines where  
generally visible on aerial photographs. This information is uncheck-



CONTOUR INTERVAL 20 FEET  
NATIONAL GEODETIC VERTICAL DATUM OF 1929  
TO CONVERT FEET TO METERS MULTIPLY BY 0.3048  
TO CONVERT METERS TO FEET MULTIPLY BY 3.2808  
COMPLIES WITH U.S. GEOLOGICAL SURVEY STANDARDS FOR SPATIAL ACCURACY (HORIZONTAL), CLASS 1  
DOES NOT MEET U.S. GEOLOGICAL SURVEY STANDARDS FOR SPATIAL ACCURACY (VERTICAL)  
FOR SALE BY U.S. GEOLOGICAL SURVEY  
DENVER, COLORADO 80225, OR RESTON, VIRGINIA 22092  
A FOLDER DESCRIBING TOPOGRAPHIC MAPS AND SYMBOLS IS AVAILABLE ON REQUEST



ROAD CLASSIFICATION  
Primary highway ..... Light-duty road, hard or  
hard surface ..... improved surface .....  
Secondary highway .....  
hard surface ..... Unimproved road .....  
Interstate Route U.S. Route State Route

1	2	3
4	5	6
7	8	9

1 Ariel  
2 Amboy  
3 Yale Dam  
4 Battle Ground  
5 Dole  
6 Orchards  
7 Lacamas Creek  
8 Larch Mountain

YACOLT, WA  
45122-G4-TF-024  
1990

DMA 1575 IV SW-SERIES V891

