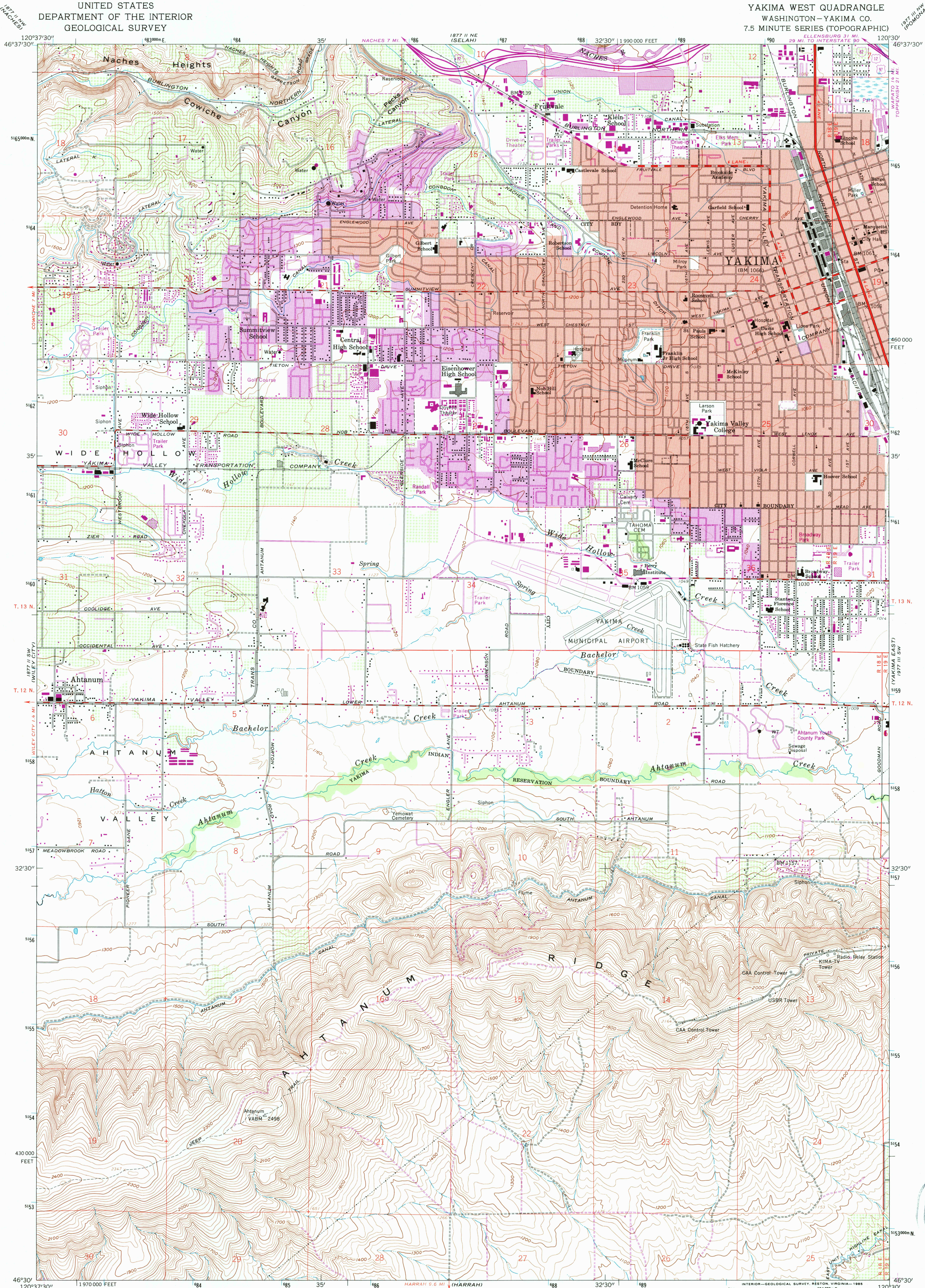


UNITED STATES
DEPARTMENT OF THE INTERIOR
GEOLOGICAL SURVEY

YAKIMA WEST QUADRANGLE
WASHINGTON—YAKIMA CO.
7.5 MINUTE SERIES (TOPOGRAPHIC)



Mapped, edited, and published by the Geological Survey

Control by USGS and NOS/NOAA

Topography from aerial photographs by photogrammetric methods

and by planetable surveys 1958. Aerial photographs taken 1956

Polyconic projection. 1927 North American datum

10,000-foot grid based on Washington coordinate system, south zone

1000-meter Universal Transverse Mercator grid ticks,

zone 10, shown in blue

Red tint indicates area in which only landmark buildings are shown

Unchecked elevations are shown in brown

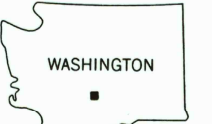
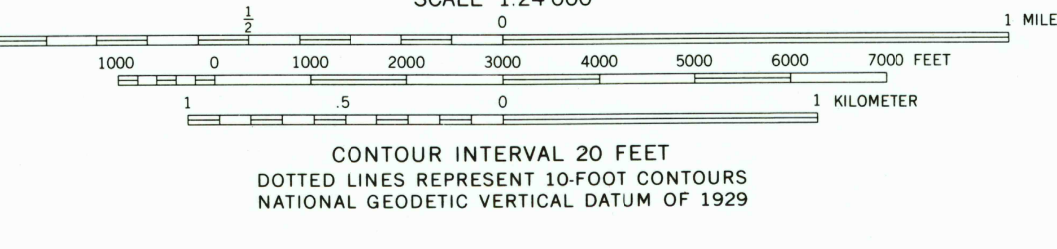
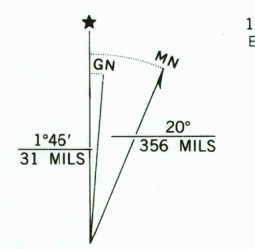
To place on the predicted North American Datum 1983,

move the projection lines 20 meters north and

89 meters east as shown by dashed corner ticks

There may be private inholdings within the boundaries of

the National or State reservations shown on this map



ROAD CLASSIFICATION	
Heavy-duty	Light-duty
Medium-duty	Unimproved dirt
Interstate Route	U. S. Route

YAKIMA WEST, WASH.

46120-E5-TF-024

1958

PHOTOREVISED 1985

DMA 1877 II SE-SERIES V891

Revisions shown in purple compiled from aerial photographs
taken 1981 and other sources. This information not
field checked. Map edited 1985
Purple tint indicates extension of urban areas

