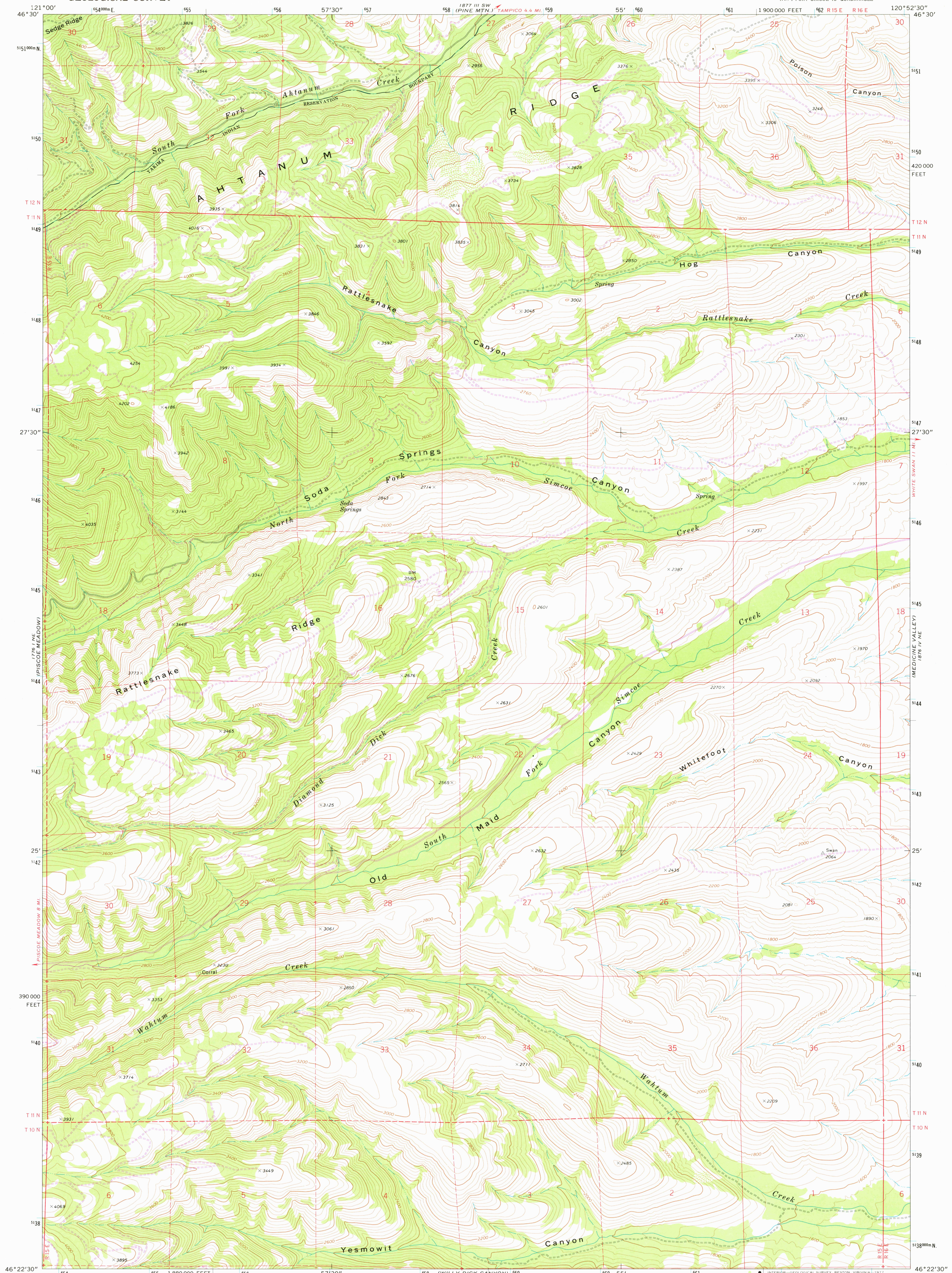


UNITED STATES  
DEPARTMENT OF THE INTERIOR  
GEOLOGICAL SURVEY

YESMOWIT CANYON QUADRANGLE  
WASHINGTON—YAKIMA CO.  
7.5 MINUTE SERIES (TOPOGRAPHIC)  
NW 1/4 FORT SIMCOE 15' QUADRANGLE



Mapped, edited, and published by the Geological Survey

Control by USGS and NOS/NOAA

Topography by photogrammetric methods from aerial

photographs taken 1956. Field checked 1957

Projection and 10,000-foot grid ticks: Washington coordinate

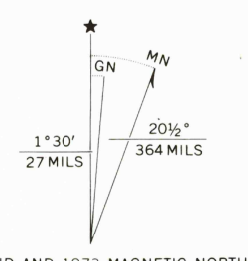
system, south zone (Lambert conformal conic)

1000-metre Universal Transverse Mercator grid ticks,

zone 10, shown in blue. 1927 North American datum

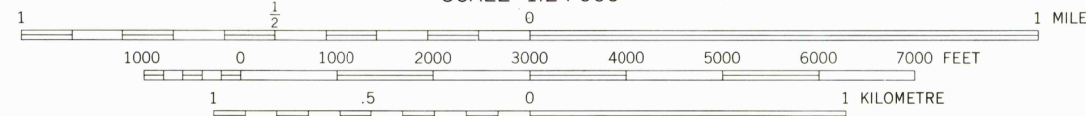
Revisions shown in purple compiled from aerial photographs

taken 1973. This information not field checked



UTM GRID AND 1973 MAGNETIC NORTH  
DECLINATION AT CENTER OF SHEET

SCALE 1:24 000



CONTOUR INTERVAL 40 FEET  
NATIONAL GEODETIC VERTICAL DATUM OF 1929

THIS MAP COMPLIES WITH NATIONAL MAP ACCURACY STANDARDS  
FOR SALE BY U. S. GEOLOGICAL SURVEY, DENVER, COLORADO 80225, OR RESTON, VIRGINIA 22092  
A FOLDER DESCRIBING TOPOGRAPHIC MAPS AND SYMBOLS IS AVAILABLE ON REQUEST

ROAD CLASSIFICATION  
Primary highway, hard surface  
Secondary highway, hard surface  
Unimproved road  
Interstate Route  
U. S. Route  
State Route



USGS  
Historical File  
Topographic Division

YESMOWIT CANYON, WASH.

NW 1/4 FORT SIMCOE 15' QUADRANGLE  
N4622.5-W12052.5/7.5

1957  
PHOTOREVISED 1973

AMS 1876 IV NW—SERIES V891

APR 12 1977