



Prepared by the Army Map Service (ESCAT), Corps of Engineers, U.S. Army, Washington, D.C. Compiled in 1955 by photogrammetric methods from: Washington, 1:50,000, AMS, 1949; United States Quadrangles, 1:48,000 and 1:62,500, USGS, 1944-1953. Planimetry revised by photogrammetric methods. Horizontal and vertical control by U.S.G.S., USC and GS, U.S.F.S., CE and IBC. Photography revised in 1955. 100,000-foot grid based on Washington coordinate system, north zone. 10,000-meter Universal Transverse Mercator grid ticks, zone 10, shown in blue.

LEGEND

ROAD DATA 1955

Figures in red denote approximate distances in miles between stars

LOS ANGELES
OMAHA
GALVESTON
Laramie
Grand Coulee
Sun Valley

RAILROADS

Single track Double or Multiple
Standard gauge
Narrow gauge

BOUNDARIES

International
State
County
Park or reservation

Landplane airport
Landing area
Seaplane airport
Seaplane anchorage
Woods: brushwood; Orchard

Landmarks: School; Church; Other

Spot elevation in feet

Marsh or swamp

Intermittent or dry stream

Power line

Scale 1:250,000

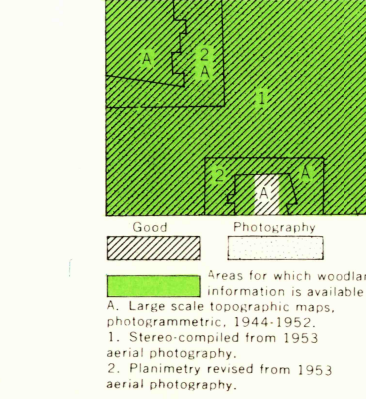
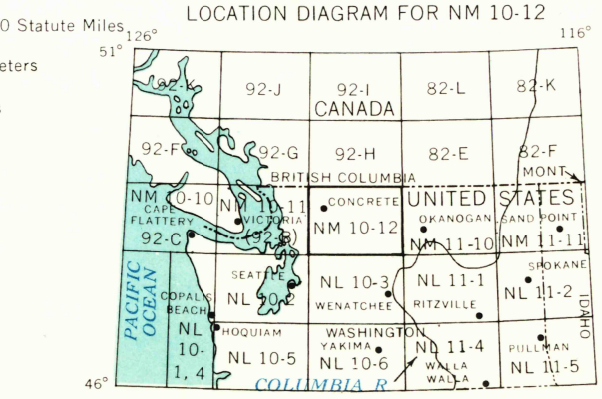
0 5 10 15 20 25 30 Kilometers

0 5 10 15 20 25 30 Nautical Miles

CONTOUR INTERVAL 200 FEET WITH SUPPLEMENTARY
CONTOURS AT 100 FOOT INTERVALS
TRANSVERSE MERCATOR PROJECTION

1955 MAGNETIC DECLINATION FOR THIS SHEET VARIES FROM 23°00' EASTERLY FOR THE CENTER OF THE WEST
TO 10°00' WESTERLY FOR THE CENTER OF THE EAST EDGE. MEAN ANNUAL CHANGE IS 0°00' WESTERLY.

FOR SALE BY U.S. GEOLOGICAL SURVEY, DENVER 2 COLORADO, OR WASHINGTON 25, D. C.



SECTIONIZED TOWNSHIP 1115

6	5	4	3	2	1
7	8	9	10	11	12
13	14	15	16	17	18
19	20	21	22	23	24
25	26	27	28	29	30
31	32	33	34	35	36

USGS
Historical File
Topographic Division

CONCRETE, UNITED STATES, CANADA