

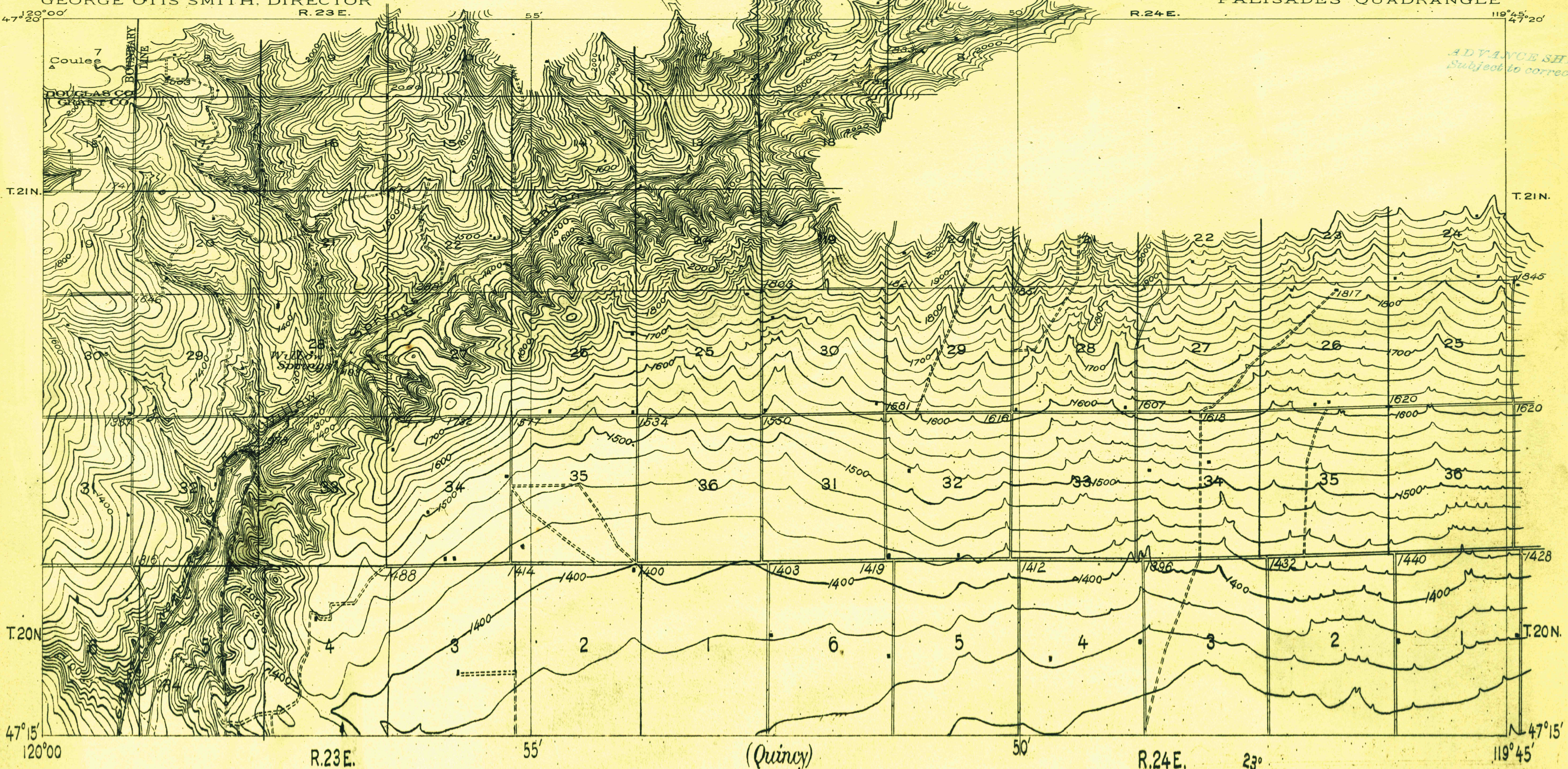
U. S. GEOLOGICAL SURVEY  
GEORGE OTIS SMITH, DIRECTOR

**TOPOGRAPHY**  
STATE OF WASHINGTON  
M. E. HAY, GOVERNOR  
HENRY LANDES, STATE GEOLOGIST

WASHINGTON  
PALISADES QUADRANGLE

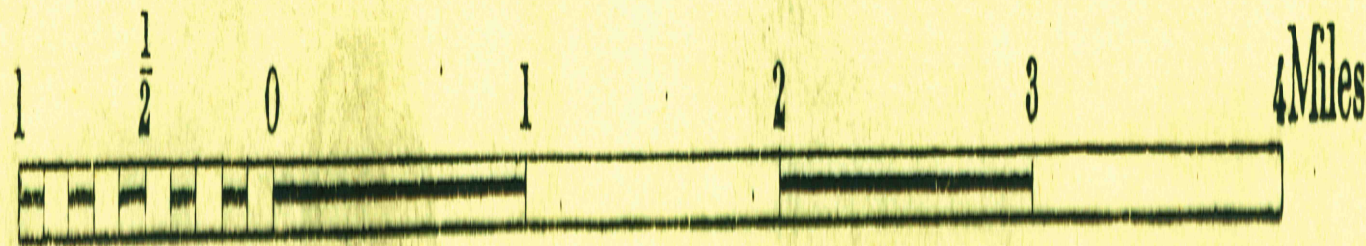
UNRECORDED COPY  
This sheet must not be taken  
from the files without an order  
from the Chief Geographer.

ADVANCE SHEET  
Subject to correction



R. B. Marshall, Chief Geographer  
T. G. Gerdine Geographer in charge  
Topography by H. L. McDonald.  
Control by C. H. Semper and R. B. Robertson

Scale  $\frac{1}{48000}$



TRUE NORTH  
MAGNETIC NORTH

119 45