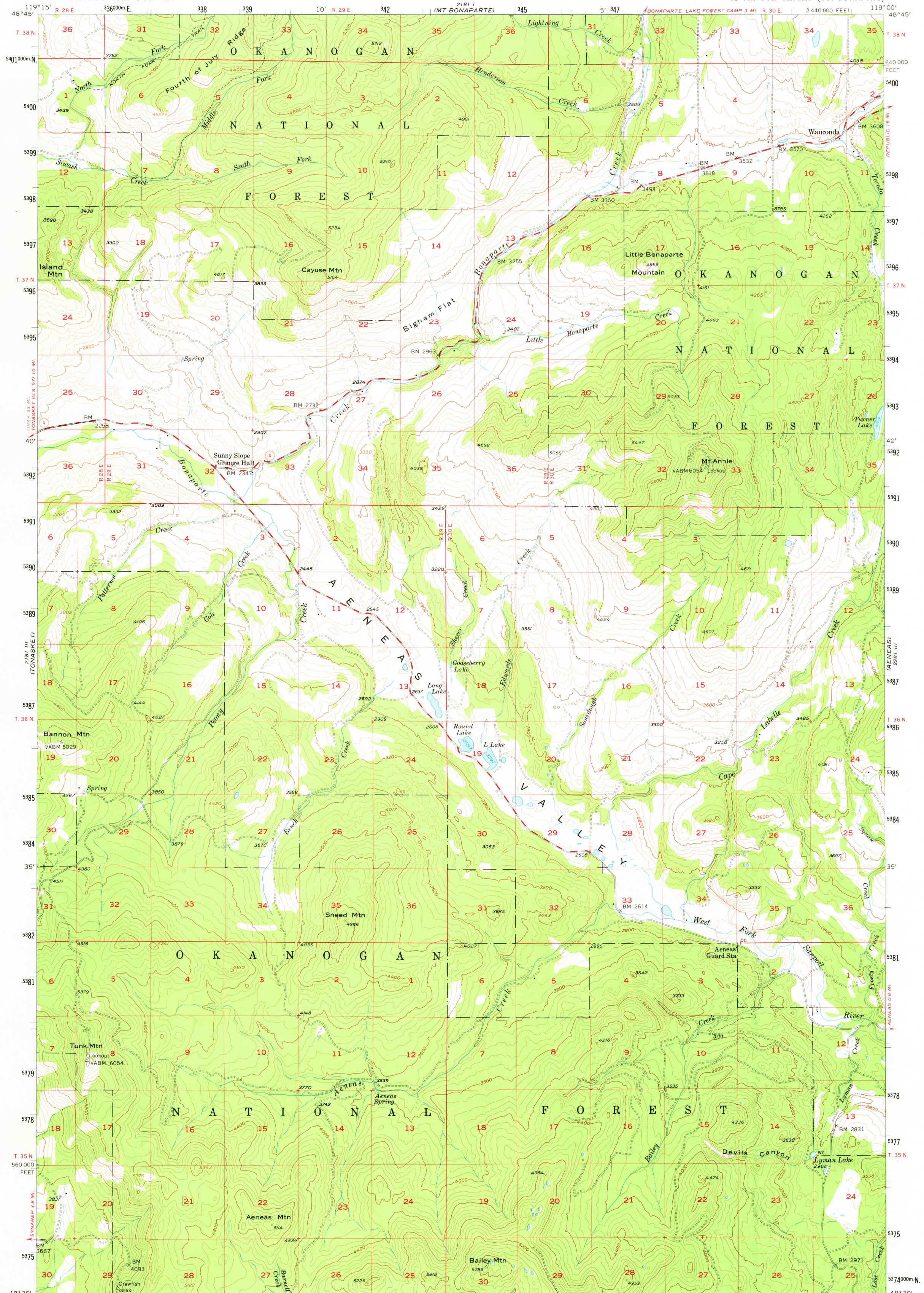


2181 IV (GPO:1967)

UNITED STATES
DEPARTMENT OF THE INTERIOR
GEOLOGICAL SURVEY

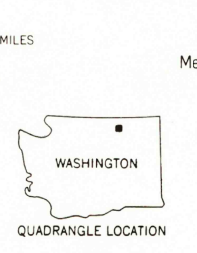
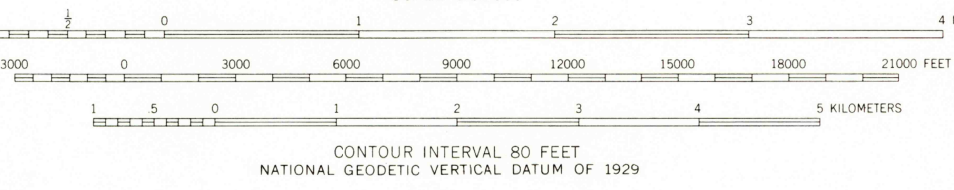
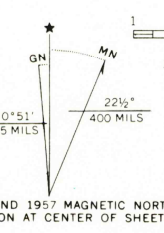
AENEAS VALLEY QUADRANGLE
WASHINGTON—OKANOGAN CO.
15 MINUTE SERIES (TOPOGRAPHIC)

2281 IV (GPO:1967)



2181 IV (GPO:1967)

Mapped, edited, and published by the Geological Survey
Control by USGS and USC&GS
Topography from aerial photographs by multiplex methods
Aerial photographs taken 1953. Field check 1957
Polyconic projection. 1927 North American datum
10,000-foot grid based on Washington coordinate system,
north zone
1000-meter Universal Transverse Mercator grid ticks,
zone 11, shown in blue
Unchecked elevations are shown in brown



ROAD CLASSIFICATION
Medium-duty — Light-duty
Unimproved dirt —
State Route

AENEAS VALLEY, WASH.
N4830—W11900/15

THIS MAP COMPLIES WITH NATIONAL MAP ACCURACY STANDARDS
FOR SALE BY U.S. GEOLOGICAL SURVEY, DENVER, COLORADO 80225, OR RESTON, VIRGINIA 22092
A FOLDER DESCRIBING TOPOGRAPHIC MAPS AND SYMBOLS IS AVAILABLE ON REQUEST

1957
AMS 2181 II—SERIES V791

2802
2-16-78