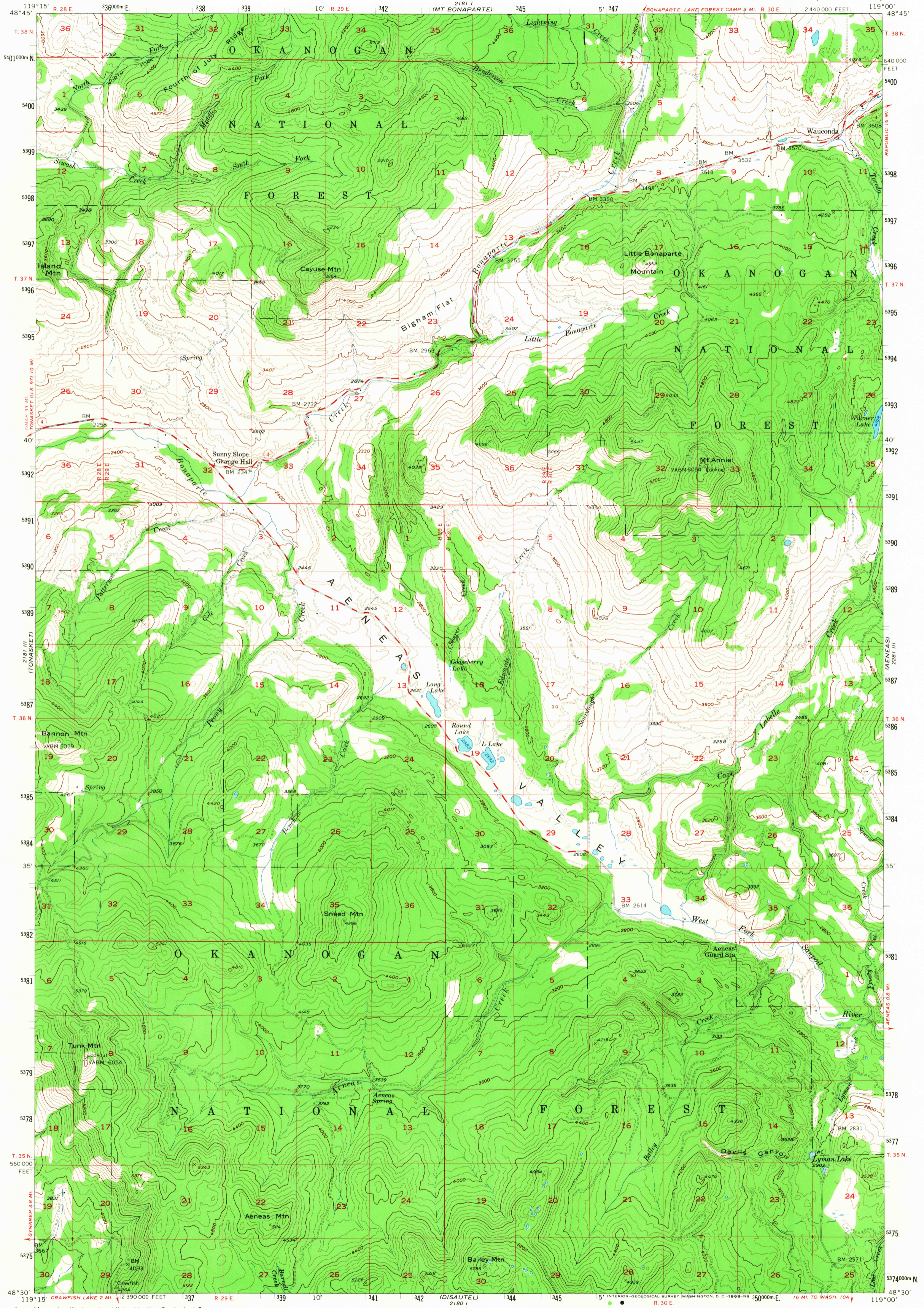


218 V (TOROVILLE)

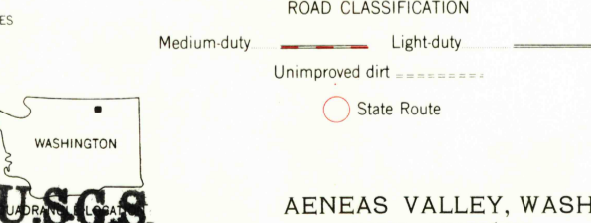
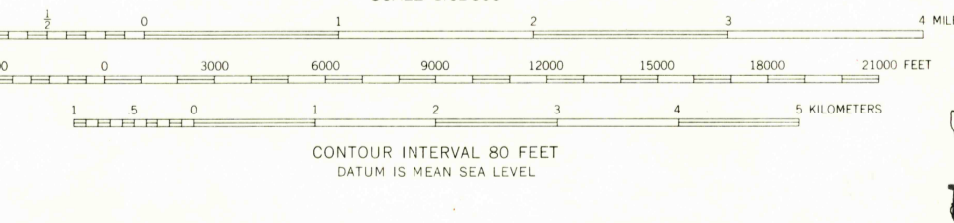
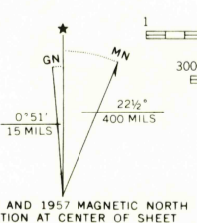
UNITED STATES  
DEPARTMENT OF THE INTERIOR  
GEOLOGICAL SURVEY

AENEAS VALLEY QUADRANGLE  
WASHINGTON - OKANOGAN CO.  
15 MINUTE SERIES (TOPOGRAPHIC)

228 V (BODIE MTN.)



Mapped, edited, and published by the Geological Survey  
Control by USGS and USC&GS  
Topography from aerial photographs by multiplex methods  
Aerial photographs taken 1953. Field check 1957  
Polyconic projection. 1927 North American datum  
10,000-foot grid based on Washington coordinate system,  
north zone  
1000-meter Universal Transverse Mercator grid ticks,  
zone 11, shown in blue  
Unchecked elevations are shown in brown



AENEAS VALLEY, WASH.  
N4830-W11900/15  
1957  
AMS 2181 II-SERIES V791

THIS MAP COMPLIES WITH NATIONAL MAP ACCURACY STANDARDS  
FOR SALE BY U. S. GEOLOGICAL SURVEY, DENVER, COLORADO 80225 OR WASHINGTON, D. C. 20542  
A FOLDER DESCRIBING TOPOGRAPHIC MAPS AND SYMBOLS IS AVAILABLE ON REQUEST

U.S.G.S.  
FILE COPY  
TOPOGRAPHIC DIVISION

USGS  
Historical File  
Topographic Division

2545

JUN 20 1968  
JUN 20 1968