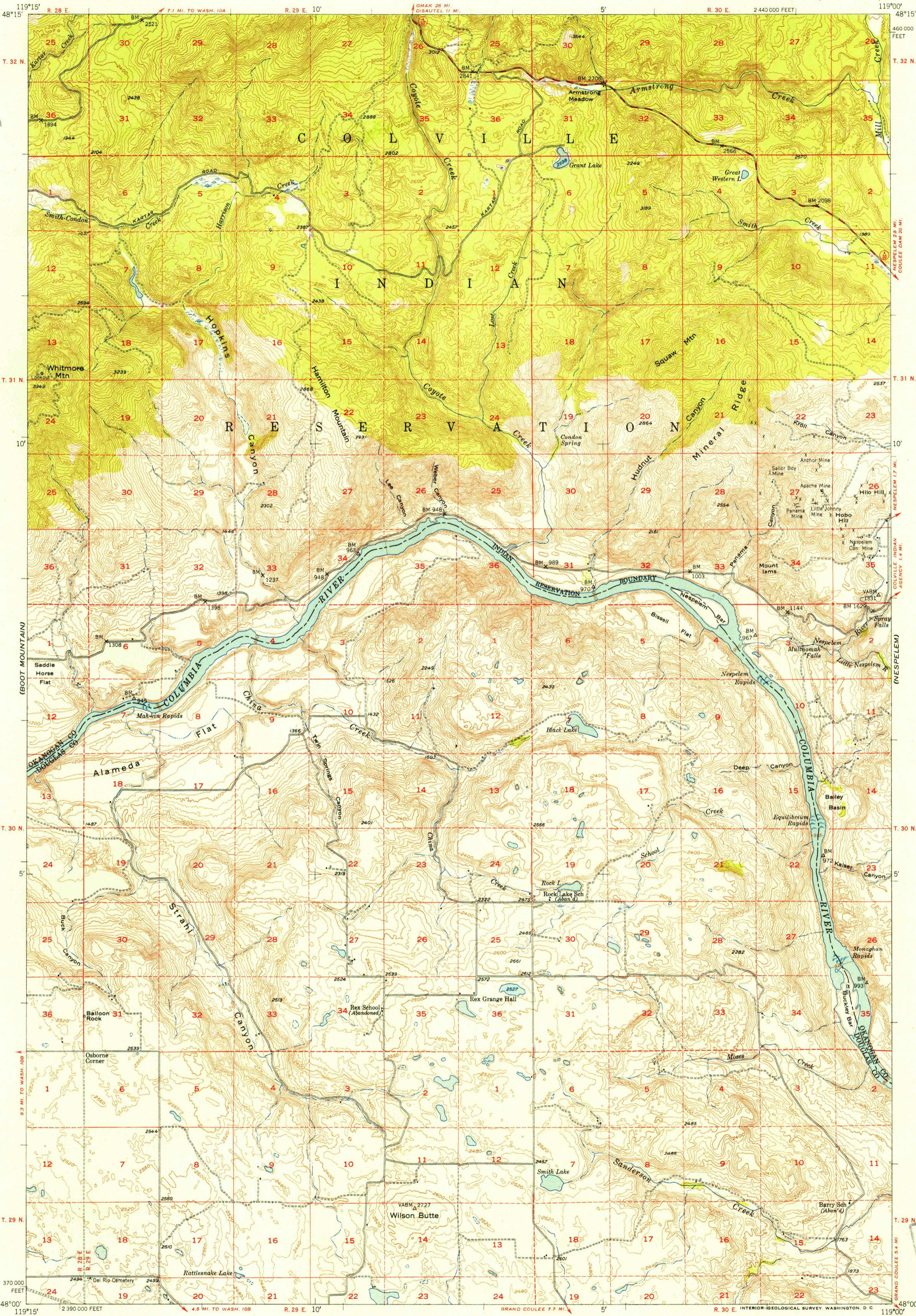
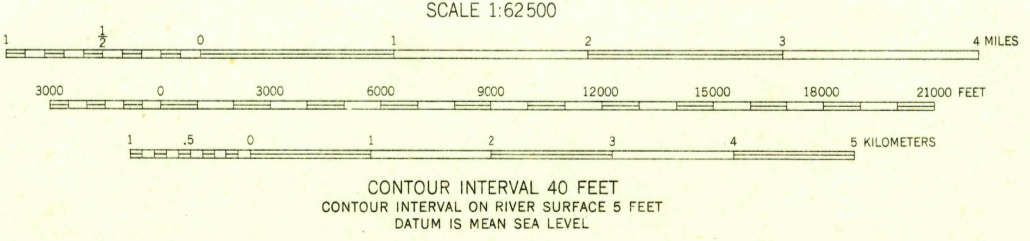


(KELLER 1:25,000)

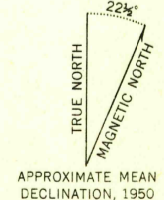
FILE COPY
Inspection and Editing



Mapped, edited, and published by the Geological Survey
Control by USGS and USC&GS
Topography from aerial photographs by multiplex methods
Aerial photographs taken 1946. Field check 1950
Polyconic projection, 1927 North American datum
10,000-foot grid based on Washington coordinate system,
north zone
Dashed land lines indicate approximate location



ROAD CLASSIFICATION
Heavy-duty ——— 4 LANE 16 LANE Light-duty ———
Medium-duty ——— 4 LANE 16 LANE Unimproved dirt ———
U. S. Route State Route



THIS MAP COMPLIES WITH NATIONAL MAP ACCURACY STANDARDS
FOR SALE BY U. S. GEOLOGICAL SURVEY, FEDERAL CENTER, DENVER, COLORADO OR WASHINGTON 25, D. C.
A FOLDER DESCRIBING TOPOGRAPHIC MAPS AND SYMBOLS IS AVAILABLE ON REQUEST

USGS ALAMEDA FLAT, WASH.
Historical File N4800-W11900/15
Topographic Division EDITION OF 1952

FILE COPY
Inspection and Editing

JUN 12 1952

2115