

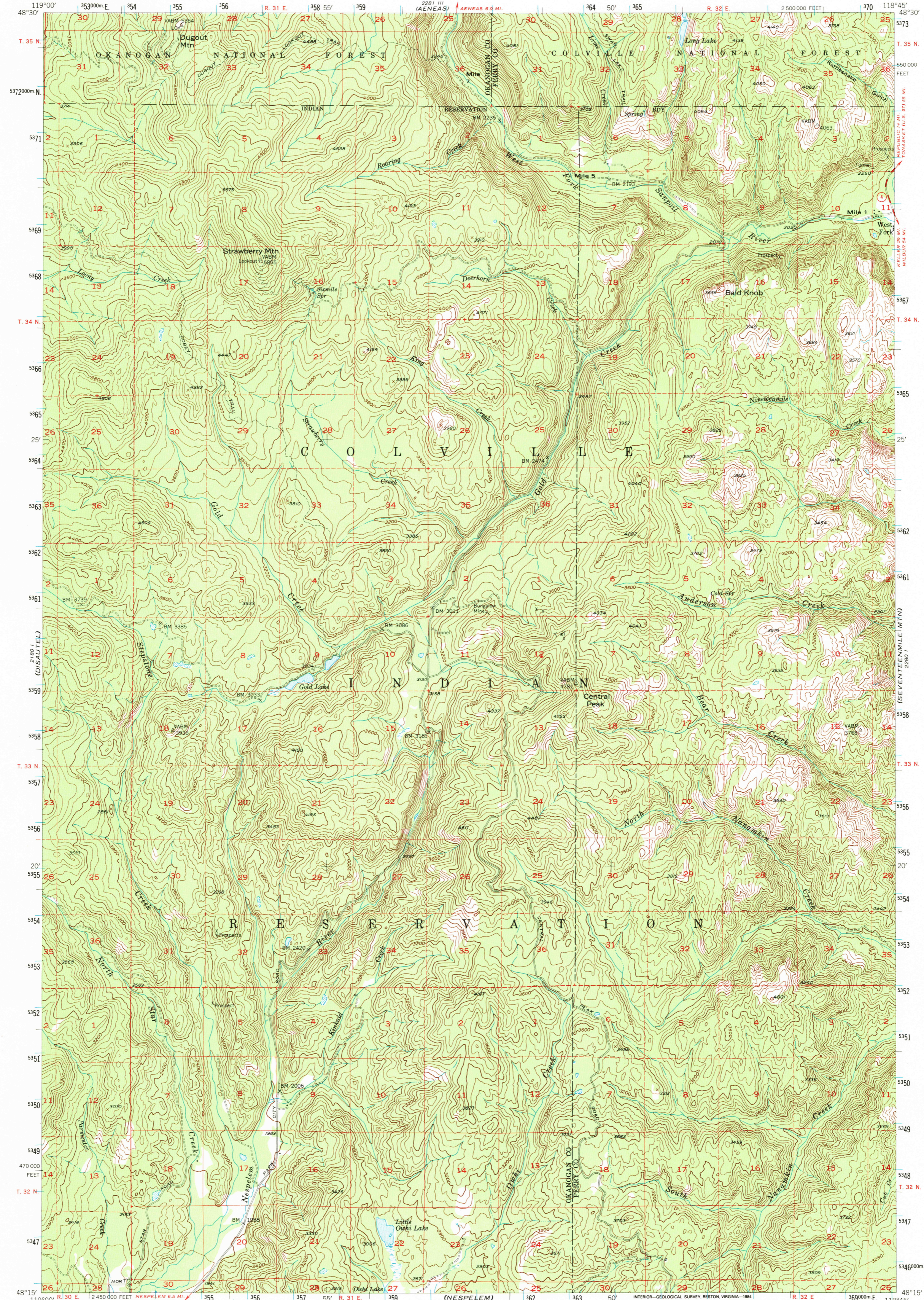
AENEAS VALLEY  
218° W  
218° W

UNITED STATES  
DEPARTMENT OF THE INTERIOR  
GEOLOGICAL SURVEY

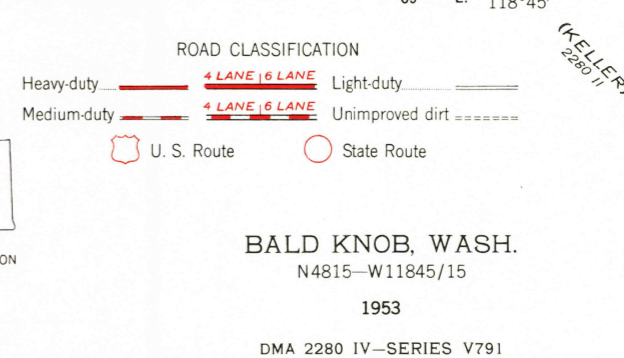
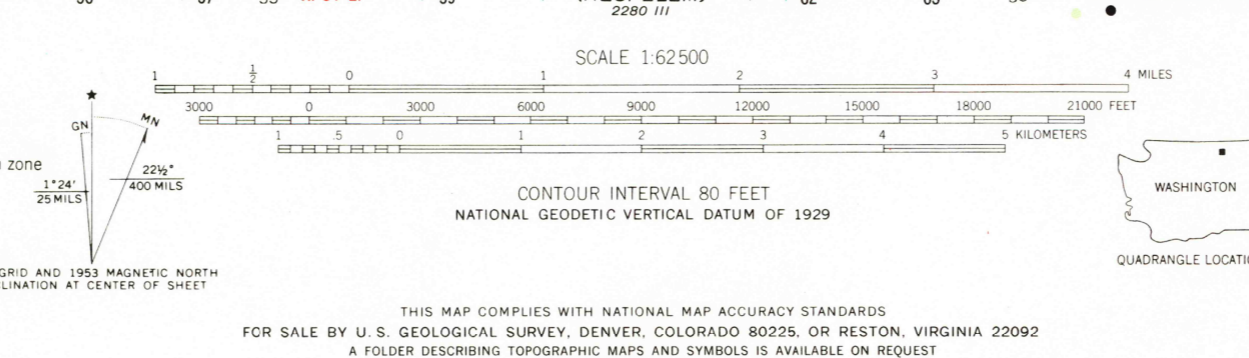
STATE OF WASHINGTON  
DEPARTMENT OF THE NATURAL RESOURCES

BALD KNOB QUADRANGLE  
WASHINGTON  
15 MINUTE SERIES (TOPOGRAPHIC)

228° W  
228° W (REPUBLIC)



Mapped, edited, and published by the Geological Survey  
Control by USGS and USC&GS  
Topography from aerial photographs by multiplex methods  
Aerial photographs taken 1946. Field check 1953  
Polyconic projection. 1927 North American datum  
10,000-foot grid based on Washington coordinate system, north zone  
1000-meter Universal Transverse Mercator grid ticks,  
zone 11, shown in blue  
To place on the predicted North American Datum 1983  
move the projection lines 18 meters north and  
84 meters east  
There may be private inholdings within the boundaries of  
the National or State reservations shown on this map



BALD KNOB, WASH.  
N4815-W11845/15  
1953  
DMA 2280 IV--SERIES V791

THIS MAP COMPLIES WITH NATIONAL MAP ACCURACY STANDARDS  
FOR SALE BY U. S. GEOLOGICAL SURVEY, DENVER, COLORADO 80225, OR RESTON, VIRGINIA 22092  
A FOLDER DESCRIBING TOPOGRAPHIC MAPS AND SYMBOLS IS AVAILABLE ON REQUEST

RETURN TO:  
USGS NMD HISTORICAL MAP ARCHIVES