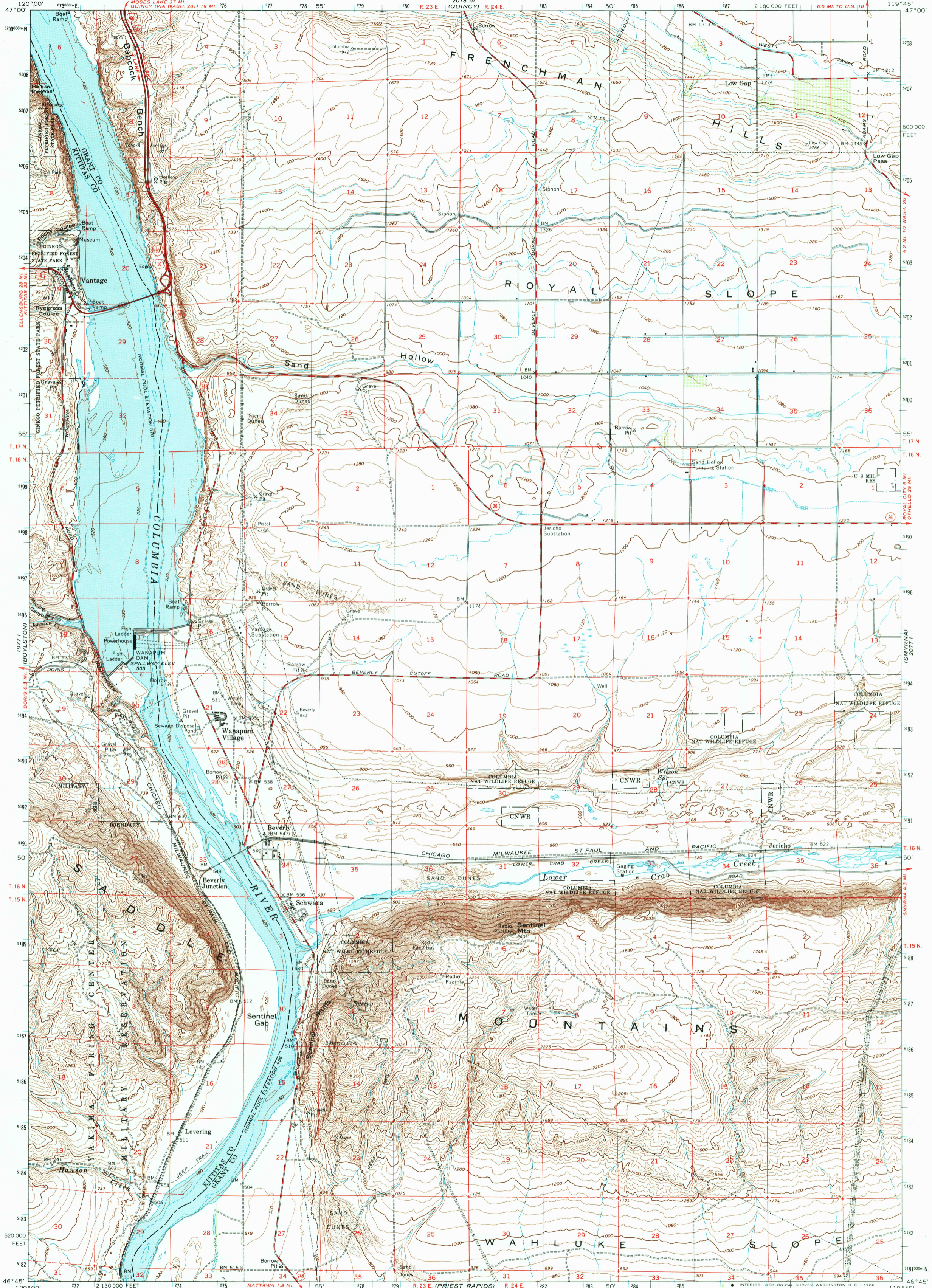
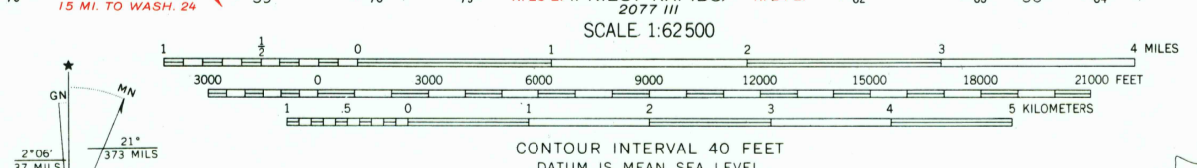


UNITED STATES
DEPARTMENT OF THE INTERIOR
GEOLOGICAL SURVEY

BEVERLY QUADRANGLE
WASHINGTON
15 MINUTE SERIES (TOPOGRAPHIC)



Mapped, edited, and published by the Geological Survey
Control by USGS, USC&GS, and U. S. Bureau of Reclamation
Compiled in 1965 from 1:24 000 maps dated 1965
Polyconic projection, 1927 North American datum
10,000-foot grid based on Washington coordinate system,
south zone
1000-meter Universal Transverse Mercator grid ticks,
zone 11, shown in blue
Elevations at section corners are for top of marker



ROAD CLASSIFICATION
Heavy-duty ——— Light-duty ———
Medium-duty ——— Unimproved dirt ———
Interstate Route — U. S. Route — State Route —
This area also covered by 7.5-minute, 1:24 000-scale
maps: Beverly NE 1965, Vantage 1965, Beverly
1965, and Beverly SE 1965

THIS MAP COMPLIES WITH NATIONAL MAP ACCURACY STANDARDS
FOR SALE BY U. S. GEOLOGICAL SURVEY, DENVER, COLORADO 80225, OR WASHINGTON, D. C. 20242
A FOLDER DESCRIBING TOPOGRAPHIC MAPS AND SYMBOLS IS AVAILABLE ON REQUEST

BEVERLY, WASH.
N4645—W11945/15
1965

AMS 2077 IV—SERIES V791