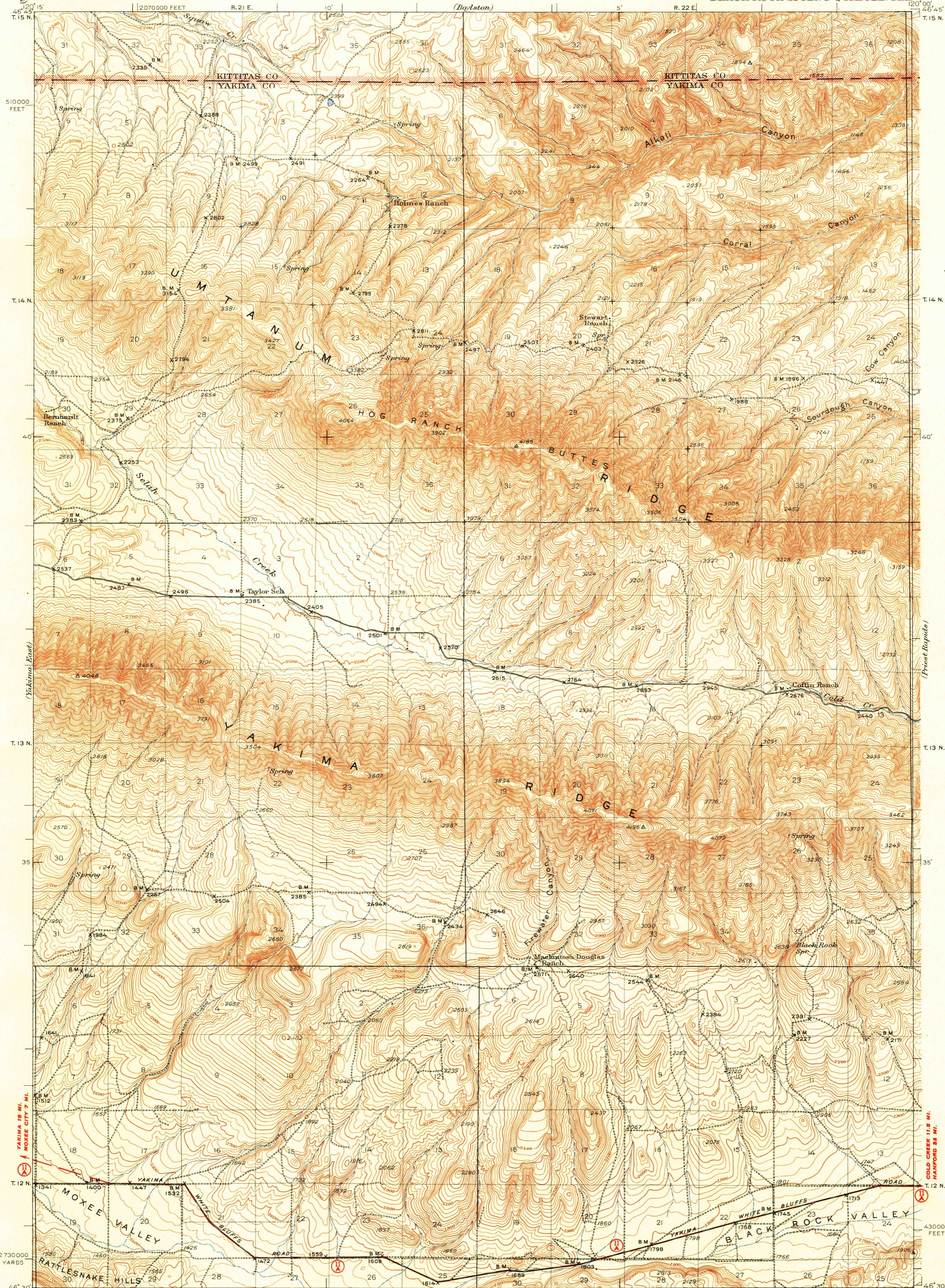


U. S. G. S.
FILE COPY

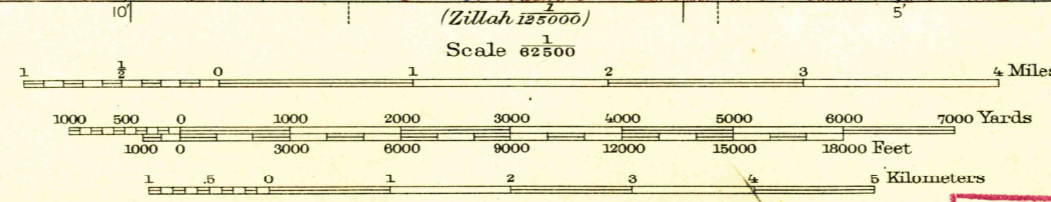
UNITED STATES
DEPARTMENT OF THE INTERIOR
GEOLOGICAL SURVEY

STATE OF WASHINGTON
REPRESENTED BY THE
DEPARTMENT OF CONSERVATION AND DEVELOPMENT
(Boylston)

WASHINGTON
BLACK ROCK SPRING QUADRANGLE



Topography by R.C.Seitz, F.K.Van Zandt and F.H.Purdy
Surveyed in 1936



Polyconic projection, 1927 North American datum
5000 yard grid based on U.S. zone system, G
To join Priest Rapids map, use dotted projection corners
10000 foot grid based on Washington (South) rectangular coordinate system

ROAD CLASSIFICATION
1947
Dependable hard-surface
heavy-duty road
Secondary hard-surface
all weather road
More than two lanes indicated along road with tick at point of change

ROAD CLASSIFICATION
1947
Dry weather roads
Loose-surface graded
Unsurfaced, graded
Dirt road
State Route

Contour interval 25 feet
Datum is mean sea level

U. S. G. S.
FILE COPY
Inspection and Editing.

BLACK ROCK SPRING, WASH.
Edition of 1941
reprinted 1948
N4630-W12000/15

USGS
Historical File
Topographic Division

MAR 9 1948

3240