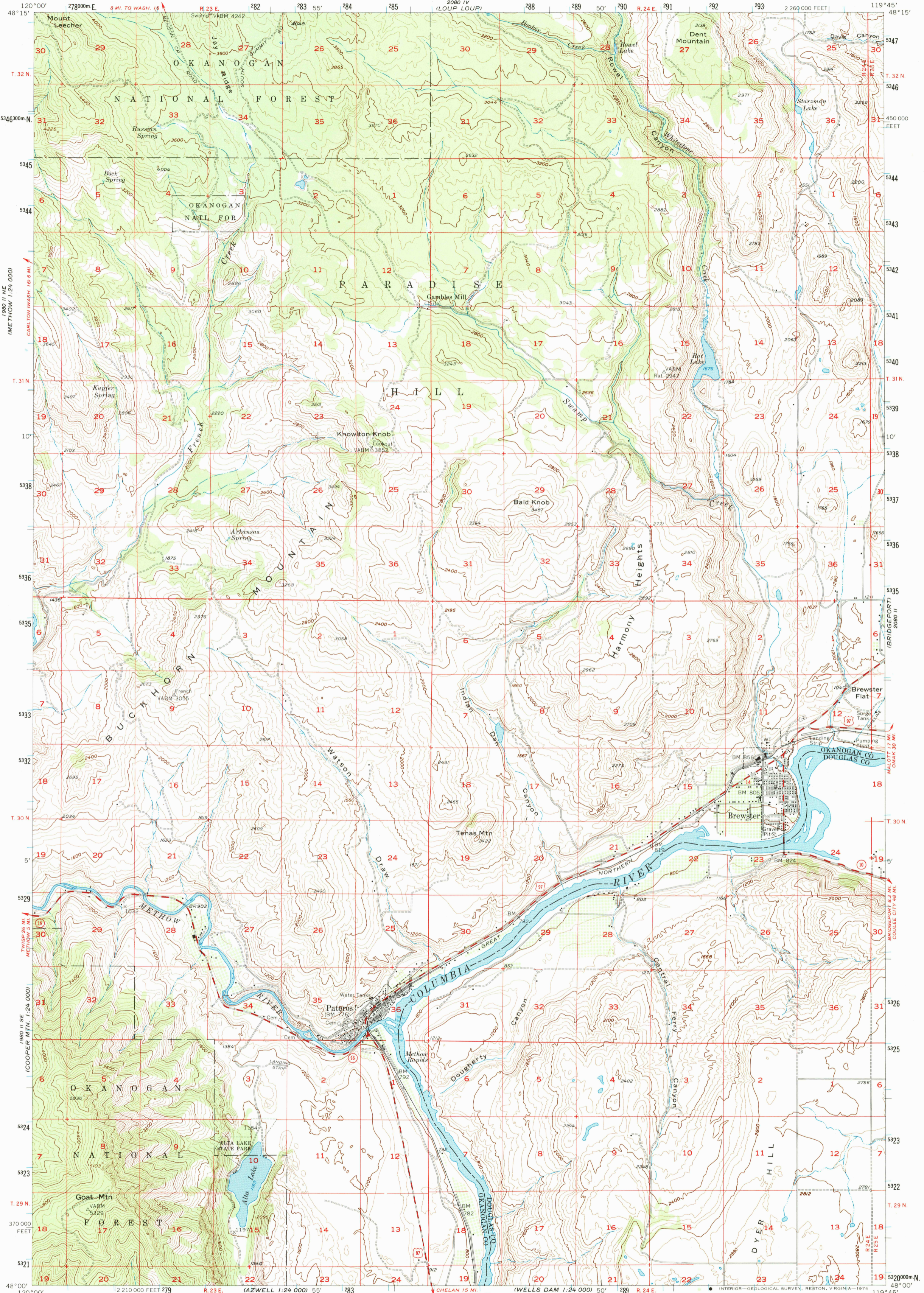


1980 I SE
(METHOW 1:24,000)

UNITED STATES
DEPARTMENT OF THE INTERIOR
GEOLOGICAL SURVEY

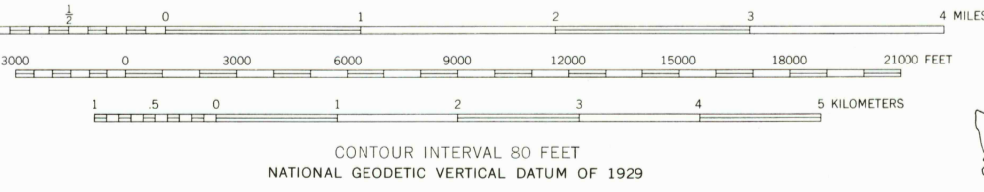
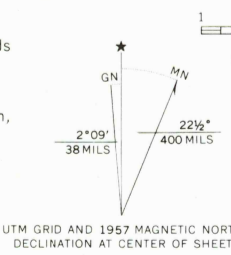
BREWSTER QUADRANGLE
WASHINGTON
15 MINUTE SERIES (TOPOGRAPHIC)

1980 I
(OKANOGAN)



1979 IV SE
(COOPER MTN 1:24,000)

Mapped, edited, and published by the Geological Survey
Control by USGS and USCGS
Topography from aerial photographs by multiplex methods
Aerial photographs taken 1953 Field check 1957
Polyconic projection. 1927 North American datum
10,000-foot grid based on Washington coordinate system,
north zone
1000-meter Universal Transverse Mercator grid ticks,
zone 11, shown in blue
Unchecked elevations are shown in brown



ROAD CLASSIFICATION
Medium-duty — Light-duty
Unimproved dirt —
U.S. Route — State Route

BREWSTER, WASH.
N4800—W11945/15
1957
AMS 2080 III—SERIES V791

1979 IV NW
(WELLS DAM 1:24,000)

THIS MAP COMPLIES WITH NATIONAL MAP ACCURACY STANDARDS
FOR SALE BY U.S. GEOLOGICAL SURVEY, DENVER, COLORADO 80225, OR RESTON, VIRGINIA 22092
A FOLDER DESCRIBING TOPOGRAPHIC MAPS AND SYMBOLS IS AVAILABLE ON REQUEST