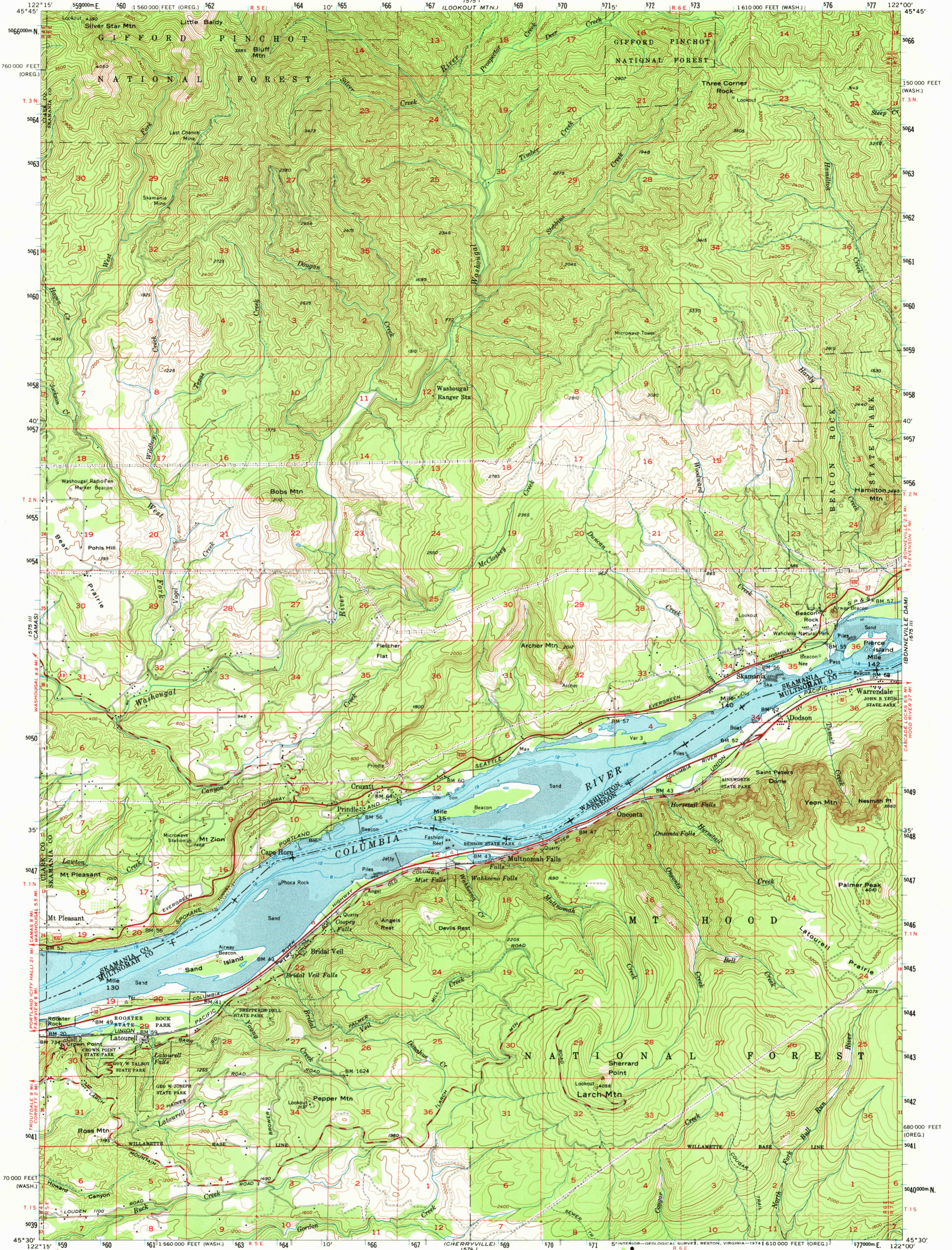


1575 II
(CAMAS)

UNITED STATES
DEPARTMENT OF THE INTERIOR
GEOLOGICAL SURVEY

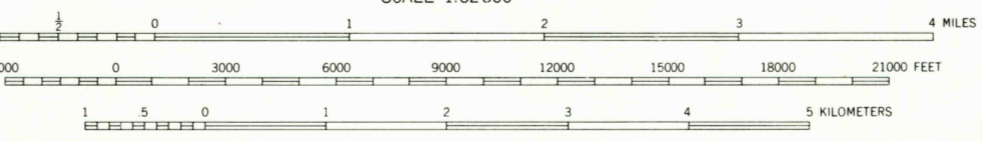
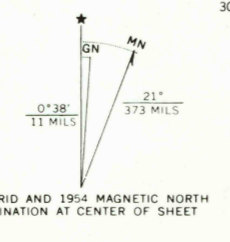
BRIDAL VEIL QUADRANGLE
WASHINGTON-OREGON
15 MINUTE SERIES (TOPOGRAPHIC)

1575 IV
(WIND RIVER)



1575 III
(CAMAS)

Mapped, edited, and published by the Geological Survey
Control by USGS, USC&GS, and State of Oregon
Topography from aerial photographs by Kelsh plotter
Aerial photographs taken 1952. Advance field check 1954
Polyconic projection. 1927 North American datum
10,000-foot grids based on Washington coordinate system,
south zone and Oregon coordinate system, north zone
1000-meter Universal Transverse Mercator grid ticks,
zone 10, shown in blue
Oregon-Washington boundary by interstate agreement
December 1956. Subject to ratification
Hydrography compiled from USC&GS chart 6156 (1953)
Dashed land lines indicate approximate locations



CONTOUR INTERVAL 80 FEET
DATUM IS MEAN SEA LEVEL
DEPTH CURVES IN FEET—COLUMBIA RIVER DATUM

THIS MAP COMPLIES WITH NATIONAL MAP ACCURACY STANDARDS
FOR SALE BY U. S. GEOLOGICAL SURVEY, DENVER, COLORADO 80225, OR RESTON, VIRGINIA 22092
A FOLDER DESCRIBING TOPOGRAPHIC MAPS AND SYMBOLS IS AVAILABLE ON REQUEST

ROAD CLASSIFICATION

Heavy-duty	Light-duty
Medium-duty	Unimproved dirt
U.S. Route	State Route



BRIDAL VEIL, WASH.-OREG.
N 4930—W 12200/15

USGS
Historical File
Topographic Division

1954
AMS 1575 II—SERIES V791

MAY 23 1974