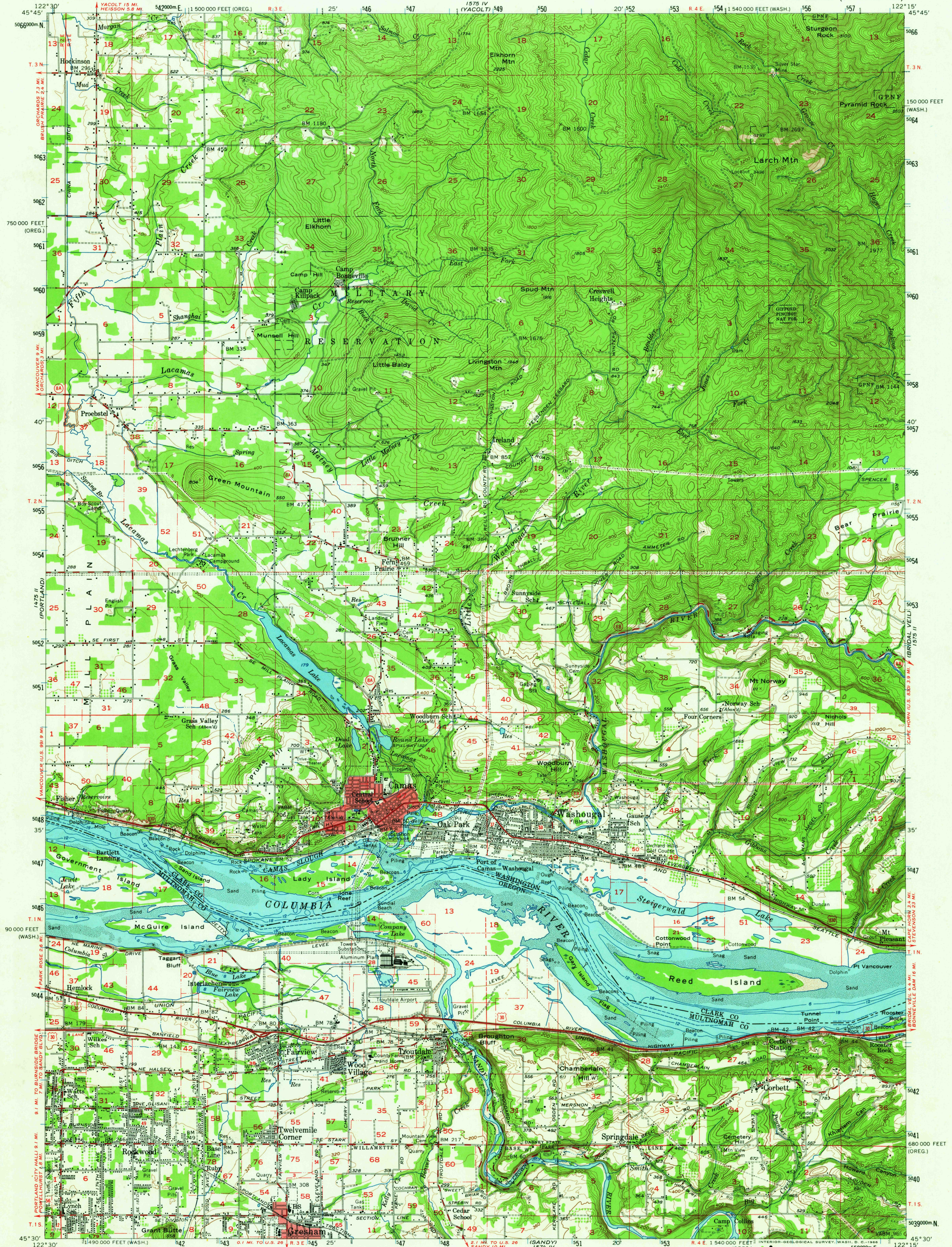
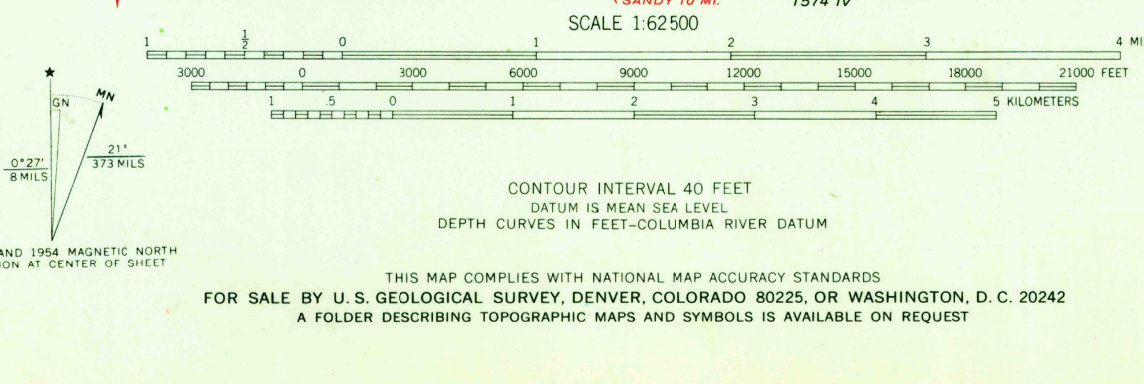


UNITED STATES
DEPARTMENT OF THE INTERIOR
GEOLOGICAL SURVEY

CAMAS QUADRANGLE
WASHINGTON—OREGON
15 MINUTE SERIES (TOPOGRAPHIC)



Mapped, edited, and published by the Geological Survey
Control by USGS, USC&GS, USCE, and State of Oregon
Topography from aerial photographs by photogrammetric methods
and by plane-table surveys. Culture and drainage in part by
USC&GS. Aerial photographs taken 1951-52. Field check 1954
Polyconic projection. 1927 North American datum
10,000-foot grid based on Washington coordinate system,
south zone and Oregon coordinate system, north zone
1000-meter Universal Transverse Mercator grid ticks,
zone 10, shown in blue
Oregon-Washington boundary by interstate agreement
December 1956. Subject to ratification
Hydrography compiled from USC&GS chart 6156 (1951-53)
Red tint indicates areas in which only landmark buildings are shown
Dashed land lines indicate approximate locations



ROAD CLASSIFICATION
Heavy-duty ——— Light-duty ———
Medium-duty ——— Unimproved dirt ———
U.S. Route ——— State Route ———
This area also partially covered by 1:24,000 scale
maps of Lacamas Creek, Camas, and Washougal
7.5 minute quadrangles, surveyed 1954.
U.S.G.S. CAMAS, WASH.—OREG.
N4530—W12215/15
1954
AMS 1575 III—SERIES V791

3690
MAR 24 1968

USCS
Historical File
Topographic Division