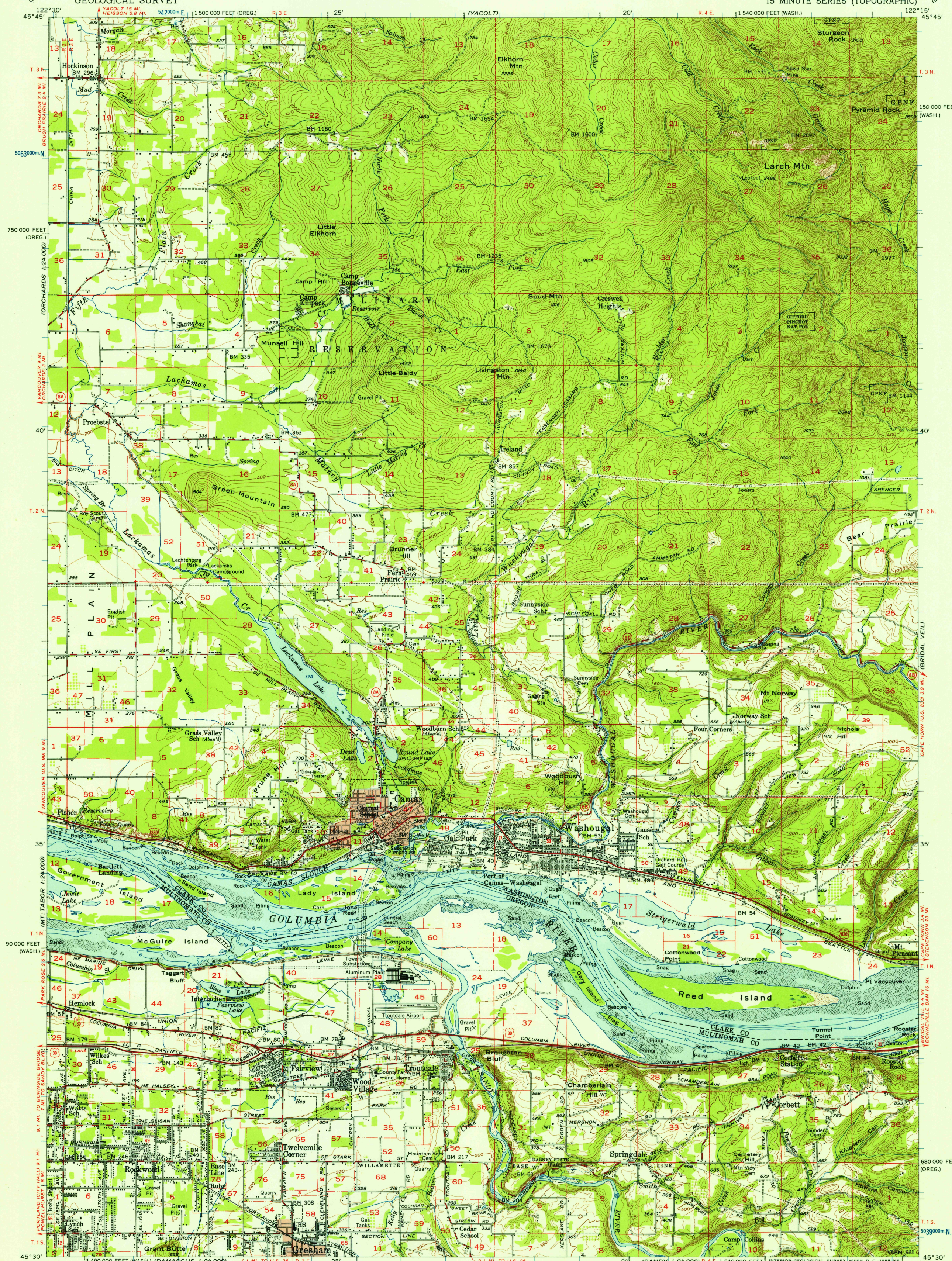
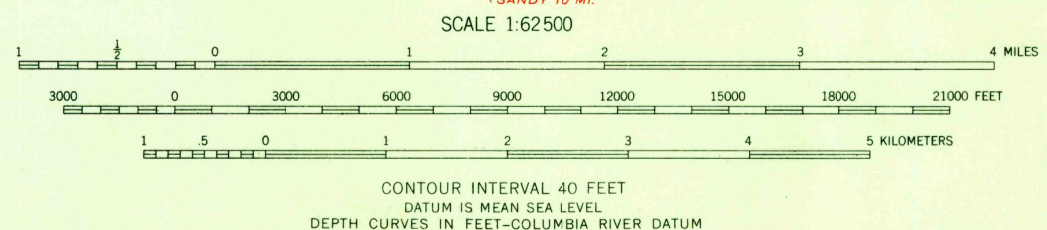


UNITED STATES
DEPARTMENT OF THE INTERIOR
GEOLOGICAL SURVEY

CAMAS QUADRANGLE
WASHINGTON—OREGON
15 MINUTE SERIES (TOPOGRAPHIC)



Mapped, edited, and published by the Geological Survey
Control by USGS, USC&GS, USCE, and State of Oregon
Topography from aerial photographs by photogrammetric methods
and by planetable surveys. Culture and drainage in part by
USC&GS. Aerial photographs taken 1951-52. Field check 1954
Polyconic projection. 1927 North American datum
10,000-foot scales based on Washington coordinate system,
south zone and Oregon coordinate system, north zone
1000-meter Universal Transverse Mercator grid ticks,
zone 10, shown in blue
Oregon—Washington boundary by interstate agreement
December 1956. Subject to ratification
Hydrography compiled from USC&GS chart 6156 (1951-53)
Red tint indicates areas in which only landmark buildings are shown
Dashed land lines indicate approximate locations



ROAD CLASSIFICATION
Heavy-duty ——— Light-duty ———
Medium-duty ——— Unimproved dirt - - - - -
U.S. Route State Route

This area also partially covered by 1:24,000 scale
maps of Lackamas Creek, Camas, and Washouga
7.5 minute quadrangles, surveyed 1954.
CAMAS, WASH.—OREG.
N4530—W12215/15

1954

THIS MAP COMPLIES WITH NATIONAL MAP ACCURACY STANDARDS
FOR SALE BY U.S. GEOLOGICAL SURVEY, DENVER, 2, COLORADO OR WASHINGTON 25, D. C.
A FOLDER DESCRIBING TOPOGRAPHIC MAPS AND SYMBOLS IS AVAILABLE ON REQUEST

U.S.G.S.
FILE COPY
TOPOGRAPHIC DIVISION

USGS
Historical File
Topographic Division

JAN 24 1958

3380