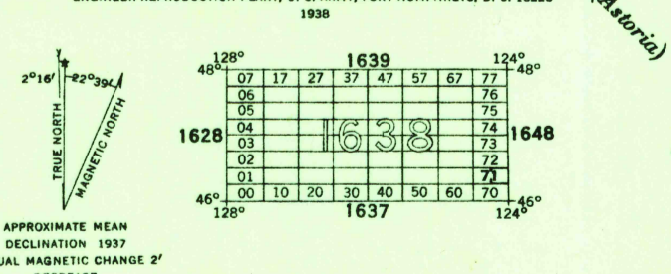
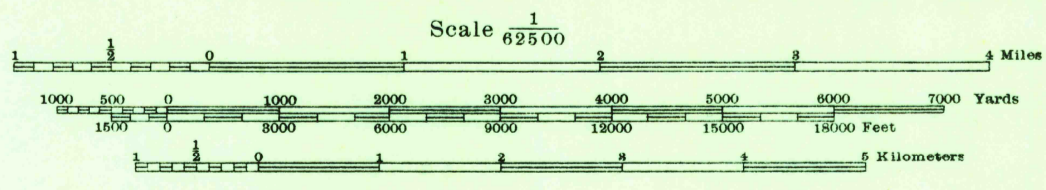


(South Beach)



Prepared under the direction of the Chief of Engineers, U. S. Army, 1936.  
Horizontal control by the U. S. Coast and Geodetic Survey, 1925-26-35,  
and the 29th Engineers, U. S. Army, 1937.  
Vertical control by the U. S. Coast and Geodetic Survey, 1933,  
and the 29th Engineers, U. S. Army, 1937. Based on tidal Datum.  
Topography by the 29th Engineers, U. S. Army, 1937,  
by sketching stereoscope from five-lens aerial photographs, flown 1937.  
Polyconic Projection, North American Datum 1927.



ROAD INFORMATION OBTAINED JULY 1937

Contour interval 20 feet  
Datum is mean sea level  
FIVE THOUSAND YARD GRID COMPUTED FROM "GRID SYSTEM FOR PROGRESSIVE MAPS  
IN THE U. S." ZONE G. U. S. C. & G. S. SPECIAL PUBLICATION NO. 59  
(THE LAST THREE DIGITS OF THE GRID NUMBERS ARE OMITTED)

NOTE: OFFICERS USING THIS MAP WILL MARK HEREON CORRECTIONS AND ADDITIONS WHICH COME  
TO THEIR ATTENTION AND SEND DIRECT TO "THE CHIEF OF ENGINEERS, WASHINGTON, D. C."

CAPE DISAPPOINTMENT, WASH.

USCS  
Historical File  
Topographic Division