

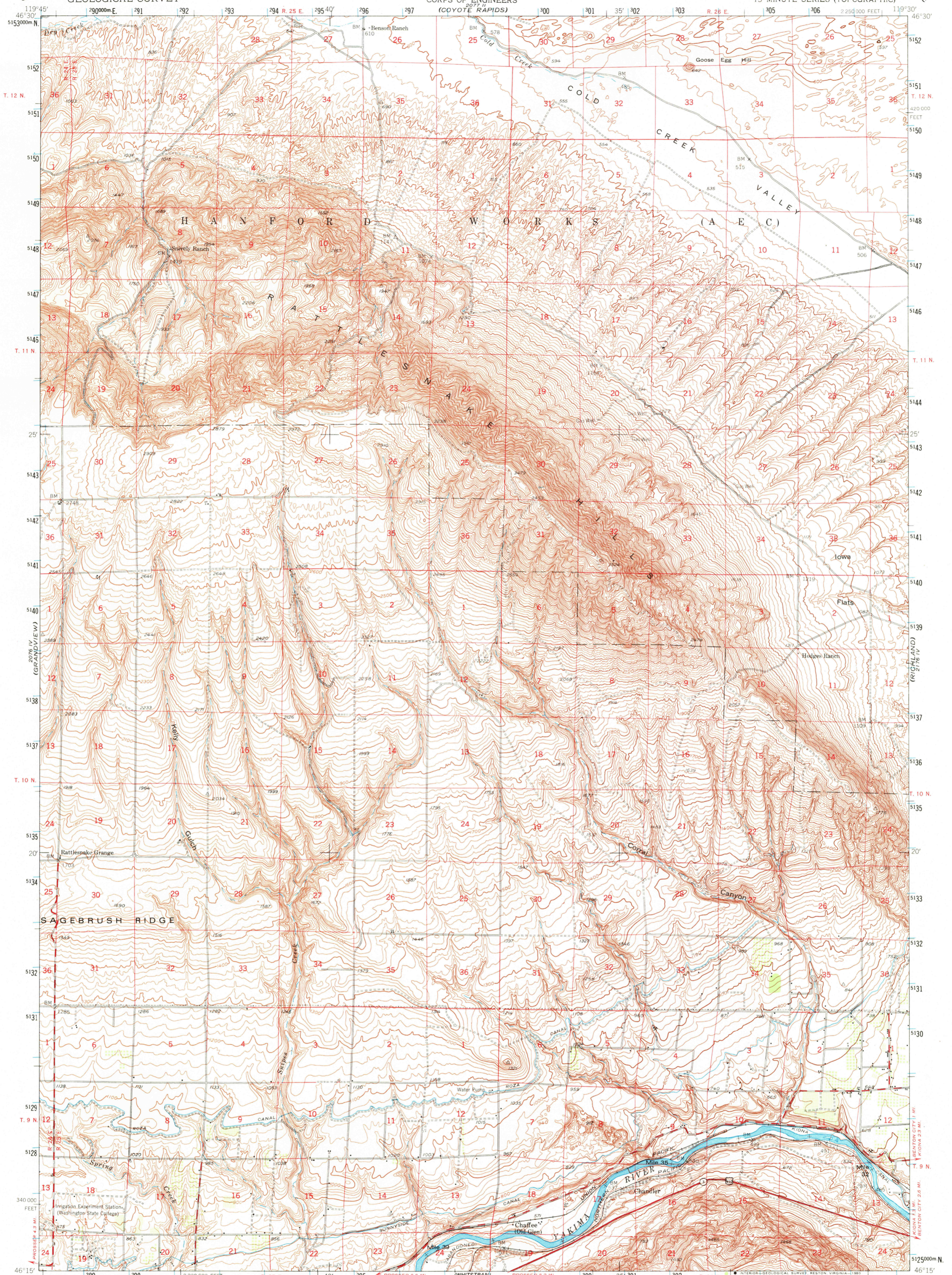
(PREVIOUS RAPIDS)

UNITED STATES  
DEPARTMENT OF THE INTERIOR  
GEOLOGICAL SURVEY

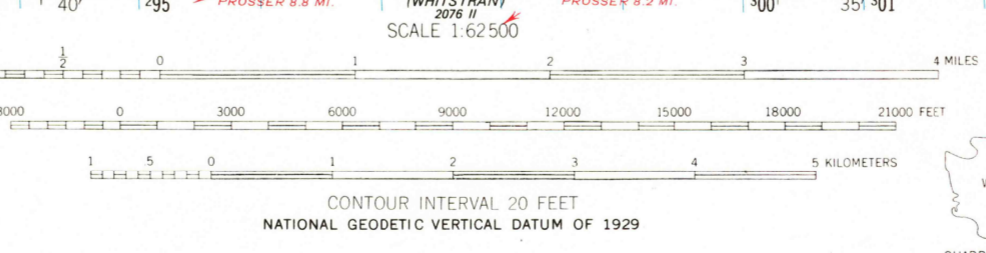
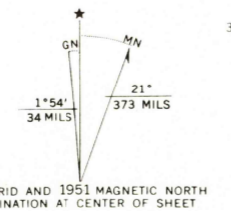
UNITED STATES  
DEPARTMENT OF THE ARMY  
CORPS OF ENGINEERS  
(COYOTE RAPIDS)

CORRAL CANYON QUADRANGLE  
WASHINGTON—BENTON CO.  
15 MINUTE SERIES (TOPOGRAPHIC)

(HANFORD)



Mapped by the Geological Survey for the Army Map Service  
Edited and published by the Geological Survey  
Control by USGS and USC&GS  
Topography from aerial photographs by multiplex methods and by plane-table surveys  
Aerial photographs taken 1948. Field check 1951  
Polyconic projection. 1927 North American datum  
10,000-foot grid based on Washington coordinate system, south zone  
1000-meter Universal Transverse Mercator grid ticks, zone 11, shown in blue  
To place on the predicted North American Datum 1983 move the projection lines 19 meters north and 86 meters east  
There may be private inholdings within the boundaries of the National or State reservations shown on this map



ROAD CLASSIFICATION

|             |                |                 |
|-------------|----------------|-----------------|
| Heavy-duty  | 4 LANE 16 LANE | Light-duty      |
| Medium-duty | 4 LANE 6 LANE  | Unimproved dirt |

U.S. Route      State Route

This area also covered by 7.5-minute, 1:24,000-scale maps: Snively Basin 1974, Iowa Flats, 1974, Snipes Creek 1974, and Corral Canyon 1977

WASHINGTON  
CORRAL CANYON, WASH.  
N4615—W11930/15  
1951  
DMA 2076 I—SERIES V791

USGS  
Historical File  
Topographic Division

DEC 29 1988

1000