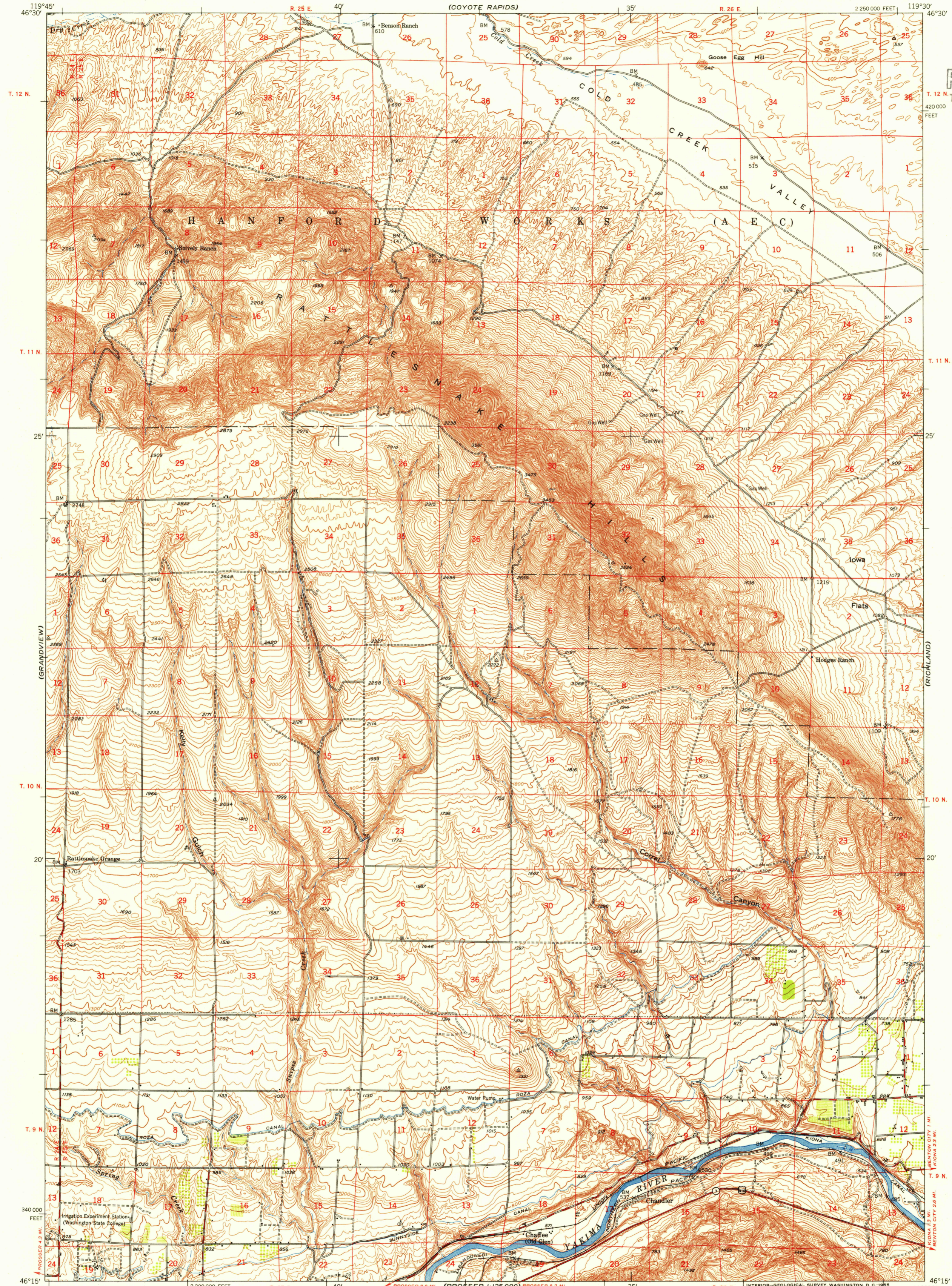
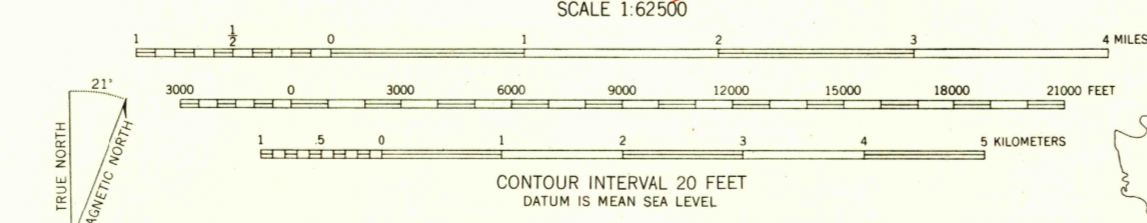


U.S.G.S.
FILE COPY
TOPOGRAPHIC DIVISION



Map by the Geological Survey for the Army Map Service
Edited and published for civil use by the Geological Survey
Control by USGS and USC&GS
Topography from aerial photographs by multiplex methods and by plane-table surveys
Aerial photographs taken 1948. Field check 1951
Polyconic projection. 1927 North American datum
10,000-foot grid based on Washington coordinate system, south zone



ROAD CLASSIFICATION

Heavy-duty	4 LANE 16 LANE	Light-duty
Medium-duty	4 LANE 16 LANE	Unimproved dirt

U.S. Route State Route



CORRAL CANYON, WASH.
N4615-W11930/15

U.S.G.S.
FILE COPY
TOPOGRAPHIC DIVISION

USGS
Historical File
Topographic Division

THIS MAP COMPLIES WITH NATIONAL MAP ACCURACY STANDARDS
FOR SALE BY U. S. GEOLOGICAL SURVEY, FEDERAL CENTER, DENVER, COLORADO OR WASHINGTON 25, D. C.
A FOLDER DESCRIBING TOPOGRAPHIC MAPS AND SYMBOLS IS AVAILABLE ON REQUEST

1951

APR 8 1955
2655