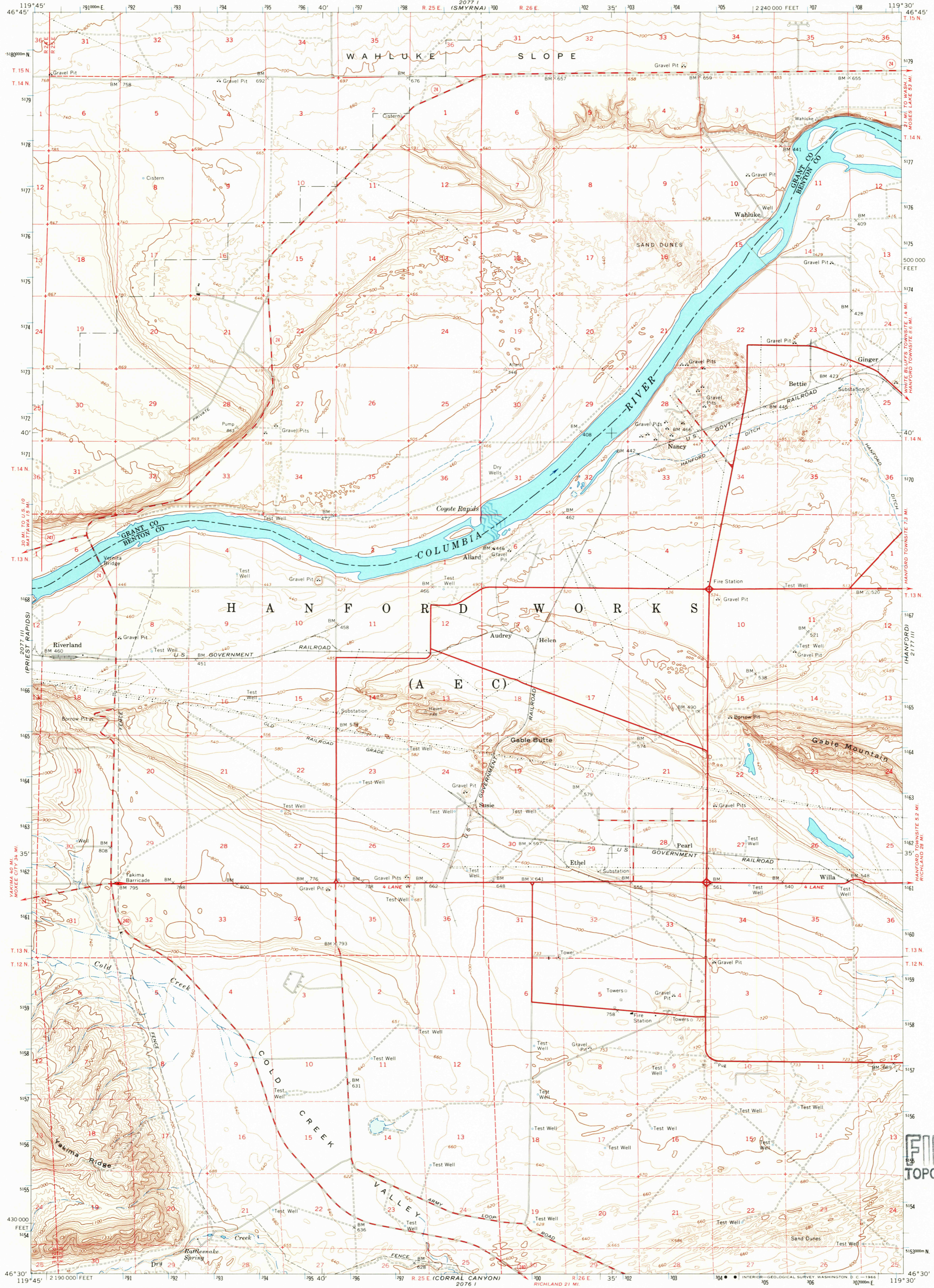


2077 IV
(SEE FILE)

UNITED STATES
DEPARTMENT OF THE INTERIOR
GEOLOGICAL SURVEY

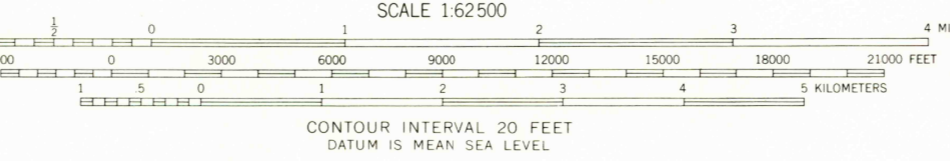
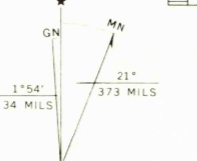
COYOTE RAPIDS QUADRANGLE
WASHINGTON
15 MINUTE SERIES (TOPOGRAPHIC)

2077 IV
(COPY)



2076 IV
(GRANDVIEW)

Maped, edited, and published by the Geological Survey in cooperation with the Army Map Service
Control by USGS and USC&GS
Topography by photogrammetric methods from aerial photographs taken 1948 and planetable surveys 1951
Revised from aerial photographs taken 1964
Field checked 1965
Polyconic projection. 1927 North American datum
10,000-foot grid based on Washington coordinate system.
south zone
1000-meter Universal Transverse Mercator grid ticks, zone 11, shown in blue



ROAD CLASSIFICATION

Heavy duty	Light duty
Medium duty	Unimproved dirt
	State Route

COYOTE RAPIDS, WASH.
N4630—W11930/15

1965
AMS 2077 II—SERIES V791

U.S.G.S.
FILE COPY
TOPOGRAPHIC DIVISION

3155

Historical
Topographic Division