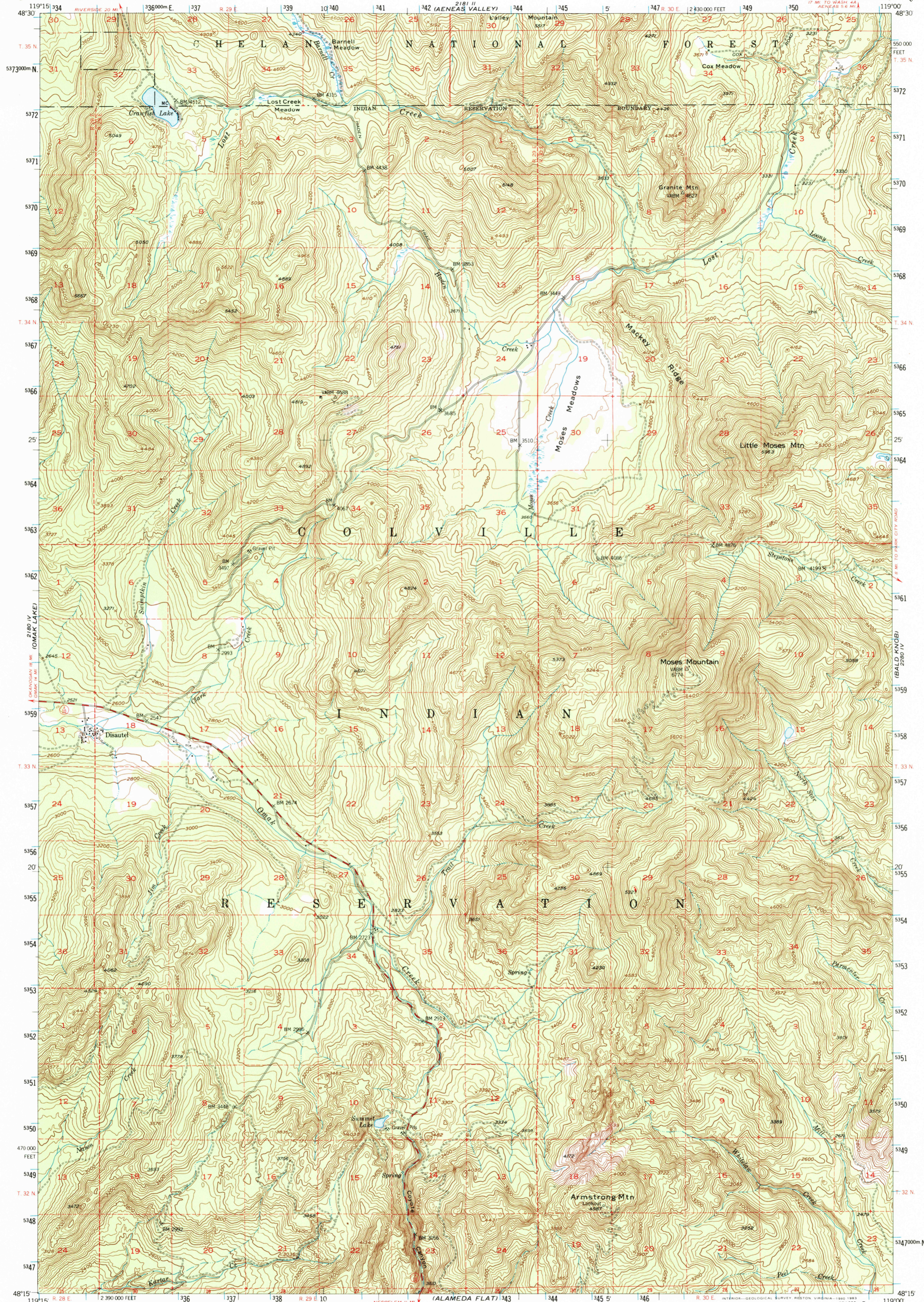


218 II
TOMASKET

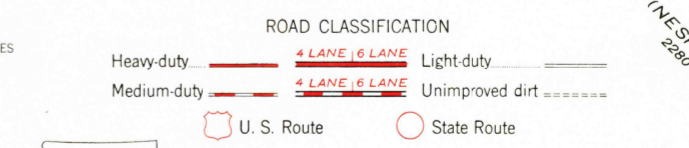
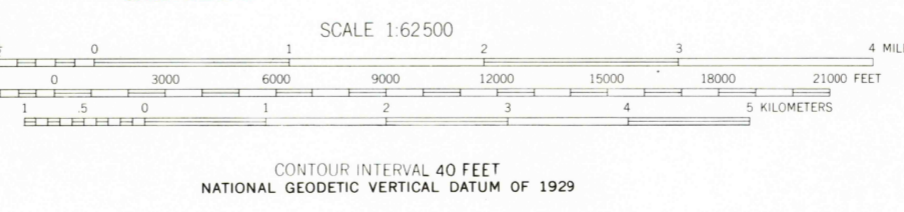
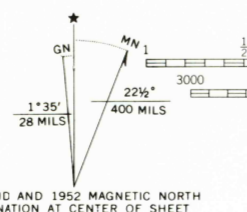
UNITED STATES
DEPARTMENT OF THE INTERIOR
GEOLOGICAL SURVEY

DISAUTEL QUADRANGLE
WASHINGTON-OKANOGAN CO.
15 MINUTE SERIES (TOPOGRAPHIC)

228 II
AENEAS



Mapped, edited, and published by the Geological Survey
Control by USGS and USC&GS
Topography from aerial photographs by multiplex methods
Aerial photographs taken 1946. Field check 1952
Polyconic projection. 1927 North American Datum
10,000-foot grid based on Washington coordinate system,
north zone
1000-meter Universal Transverse Mercator grid ticks,
zone 11, shown in blue
To place on the predicted North American Datum 1983
move the projection lines 18 meters north and 84 meters east
There may be private holdings within the boundaries of
the National or State reservations shown on this map
Dashed land lines indicate approximate locations
Unchecked elevations are shown in brown



DISAUTEL, WASH.
N4815-W1900/15

1952
DMA 2180 1-SERIES V791

FOR SALE BY U. S. GEOLOGICAL SURVEY, DENVER, COLORADO 80225, OR RESTON, VIRGINIA 22092
A FOLDER DESCRIBING TOPOGRAPHIC MAPS AND SYMBOLS IS AVAILABLE ON REQUEST

RETURN TO:
USGS NHD HISTORICAL MAP ARCHIVES