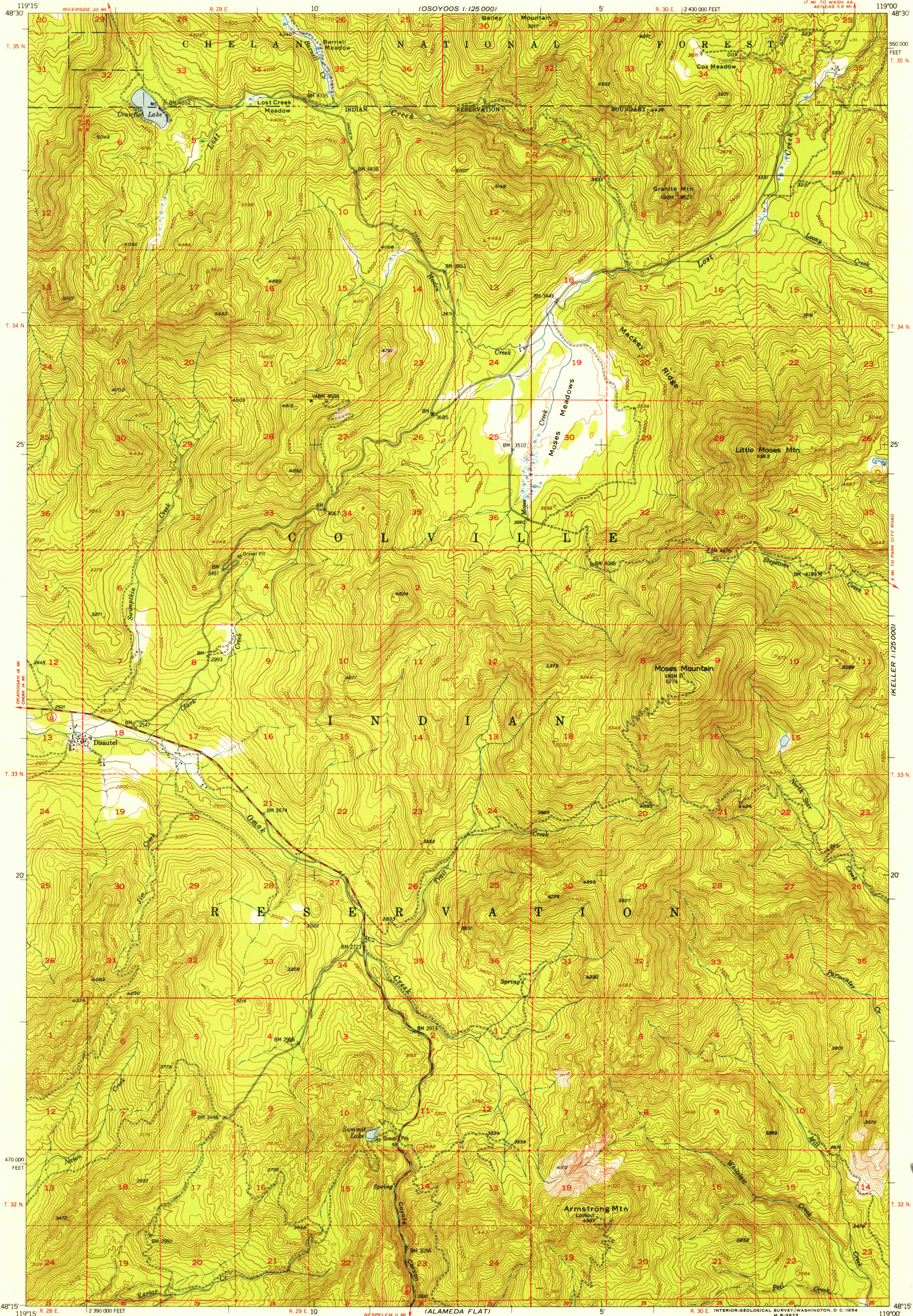


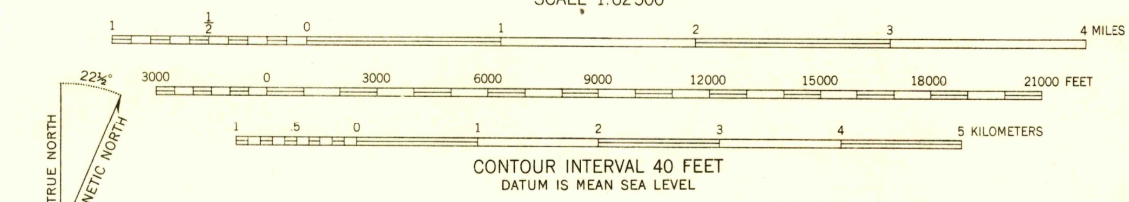
(REPUBLIC)
1:250,000



FILE COPY
Mountains and Hills

FILE COPY
Mountains and Hills

Mapped, edited, and published by the Geological Survey
Control by USGS and USC&GS
Topography from aerial photographs by multiplex methods
Aerial photographs taken 1946. Field check 1952
Polyconic projection, 1927 North American datum
10,000 foot grid based on Washington coordinate system, north zone
Dashed land lines indicate approximate locations
Unchecked elevations are shown in brown



ROAD CLASSIFICATION
Heavy-duty 4 LANE 6 LANE Light-duty
Medium-duty 4 LANE 6 LANE Unimproved dirt
U. S. Route State Route



DISAUEL, WASH.
N4815-W11900/15

USGS
Historical File
Topographic Division

FOR SALE BY U. S. GEOLOGICAL SURVEY, FEDERAL CENTER, DENVER, COLORADO OR WASHINGTON 25, D. C.
A FOLDER DESCRIBING TOPOGRAPHIC MAPS AND SYMBOLS IS AVAILABLE ON REQUEST

JUN 2 1954
2670