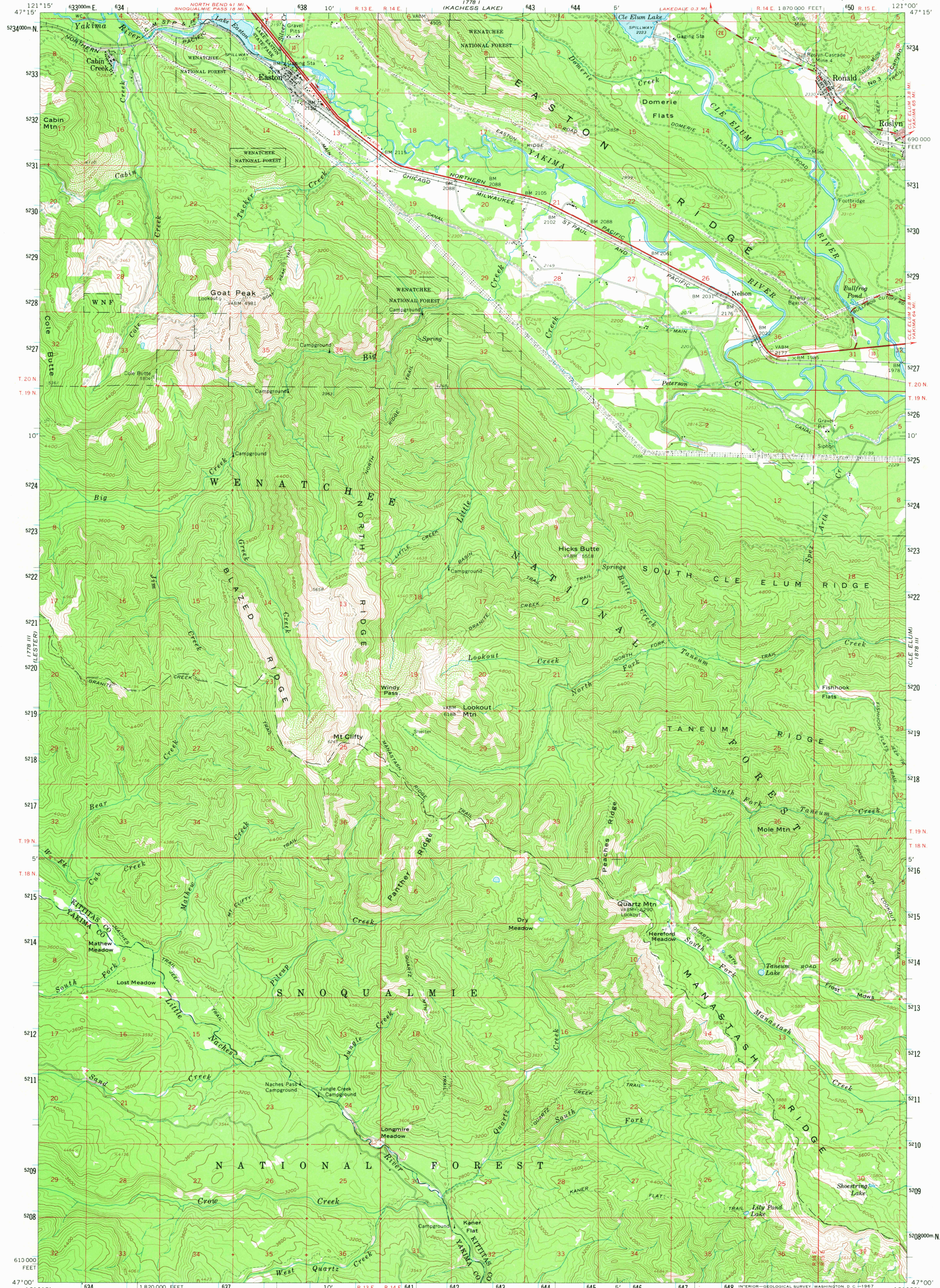


1778 I (LESTER)
1779 IV (MOUNT STUART)

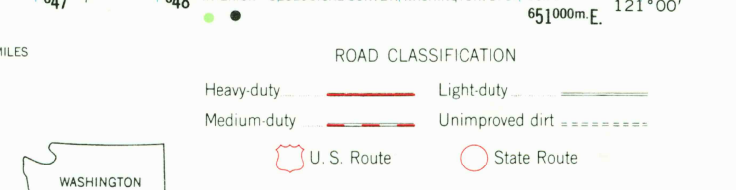
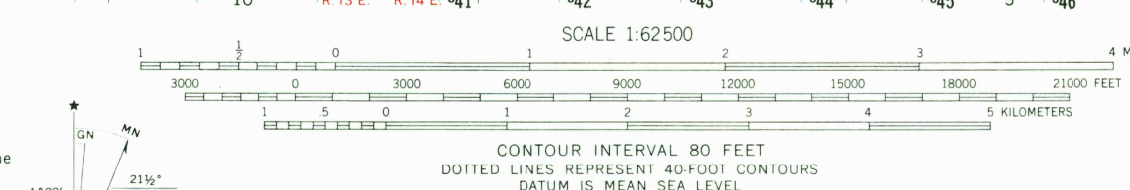
UNITED STATES
DEPARTMENT OF THE INTERIOR
GEOLOGICAL SURVEY

EASTON QUADRANGLE
WASHINGTON
15 MINUTE SERIES (TOPOGRAPHIC)

1778 IV (MOUNT STUART)



Mapped, edited, and published by the Geological Survey
Control by USGS and USC&GS
Topography by photogrammetric methods from aerial
photographs taken 1957. Field checked 1961
Polyconic projection. 1927 North American datum
10,000-foot grid based on Washington coordinate system, south zone
1000-meter Universal Transverse Mercator grid ticks,
zone 10, shown in blue
Red tint indicates area in which only landmark buildings are shown
Areas covered by dashed light-blue pattern subject to controlled
inundation by Lake Easton at elevation 2180 and
Cle Elum Lake at elevation 2240



EASTON, WASH.
N4700—W12100/15
1961
AMS 1778 II—SERIES V791

FOR SALE BY U. S. GEOLOGICAL SURVEY, DENVER, COLORADO 80225 OR WASHINGTON, D. C. 20242
A FOLDER DESCRIBING TOPOGRAPHIC MAPS AND SYMBOLS IS AVAILABLE ON REQUEST