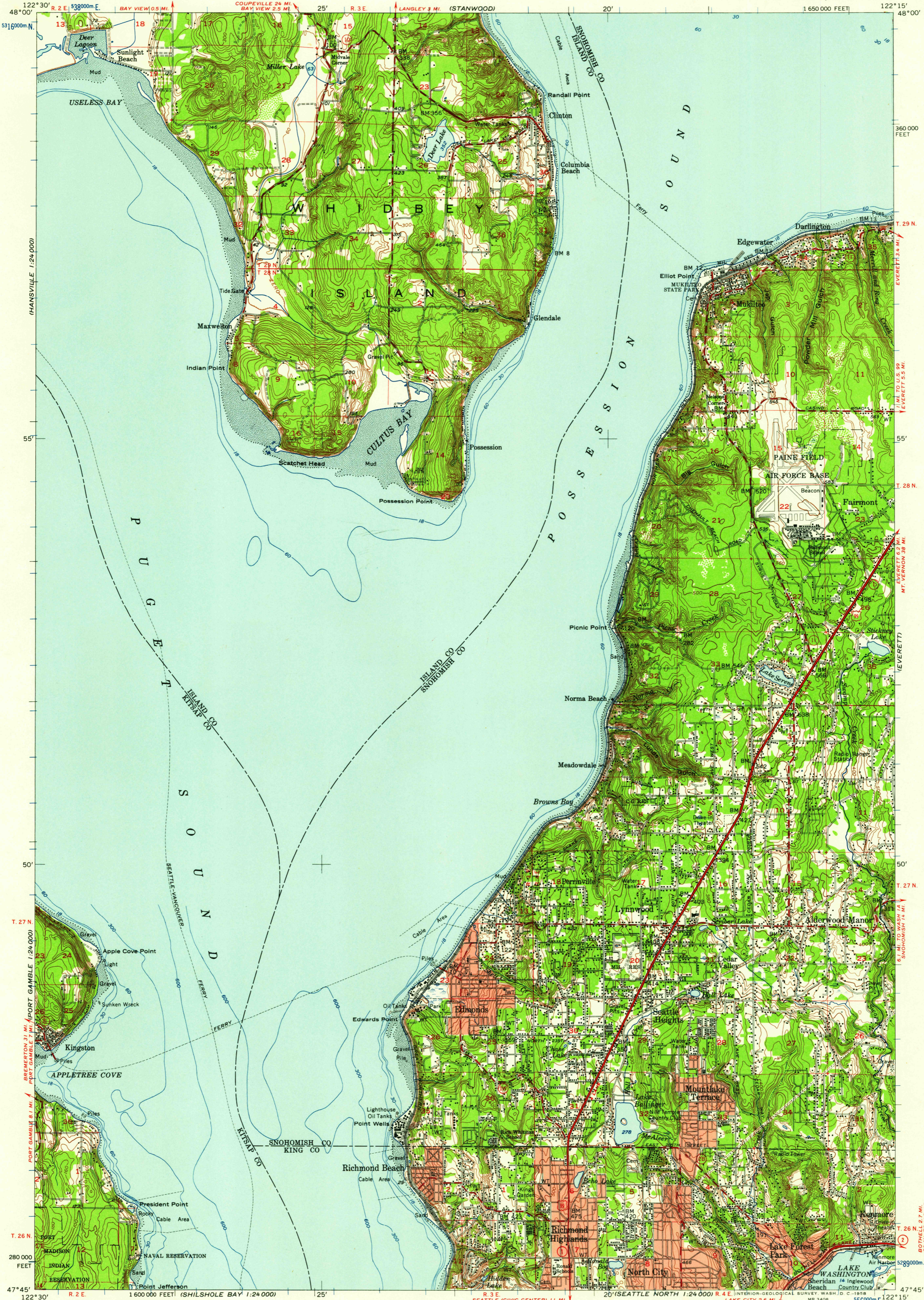


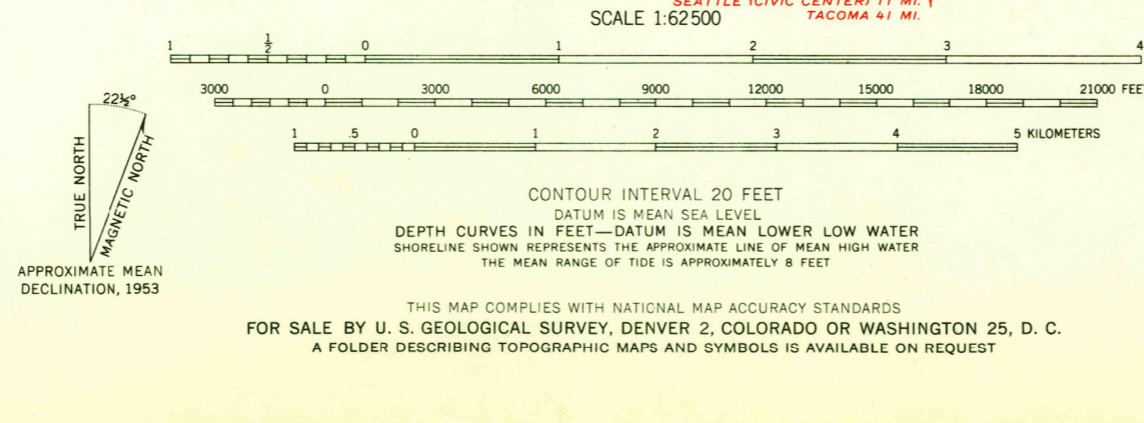
UNITED STATES  
DEPARTMENT OF THE INTERIOR  
GEOLOGICAL SURVEY

UNITED STATES  
DEPARTMENT OF THE ARMY  
CORPS OF ENGINEERS

EDMONDS QUADRANGLE  
WASHINGTON  
15 MINUTE SERIES (TOPOGRAPHIC)



Compiled by the Army Map Service  
Published for civil use by the Geological Survey  
Control by USGS and USC&GS  
Compiled in 1956 from Geological Survey 1:24,000  
scale maps of Mukilton, Maxwelton, Edmonds West, and  
Edmonds East 7.5 minute quadrangles, surveyed 1953  
Topography from aerial photographs by multiplex methods  
Aerial photographs taken 1952. Field check 1953  
Hydrography compiled from USC&GS charts 6445 and 6450  
Polyconic projection. 1927 North American datum  
10,000-foot grid based on Washington coordinate system,  
north zone  
1000-meter Universal Transverse Mercator grid ticks,  
zone 10, shown in blue  
Red tint indicates areas in which only  
landmark buildings are shown  
Dashed land lines indicate approximate locations



ROAD CLASSIFICATION  
Heavy-duty ——— Light-duty ———  
Medium-duty ——— Unimproved dirt ———  
U.S. Route (red circle) State Route (black circle)  
This area is also covered by 1:24,000 scale maps of  
Mukilton, Maxwelton, Edmonds West, and  
Edmonds East 7.5 minute quadrangles, surveyed 1953  
EDMONDS, WASH.  
N4745—W12215/15  
1953  
USGS  
Historical File  
Topographic Division

U.S.G.S.  
FILE COPY  
TOPOGRAPHIC DIVISION

SEP - 5 1958

2890