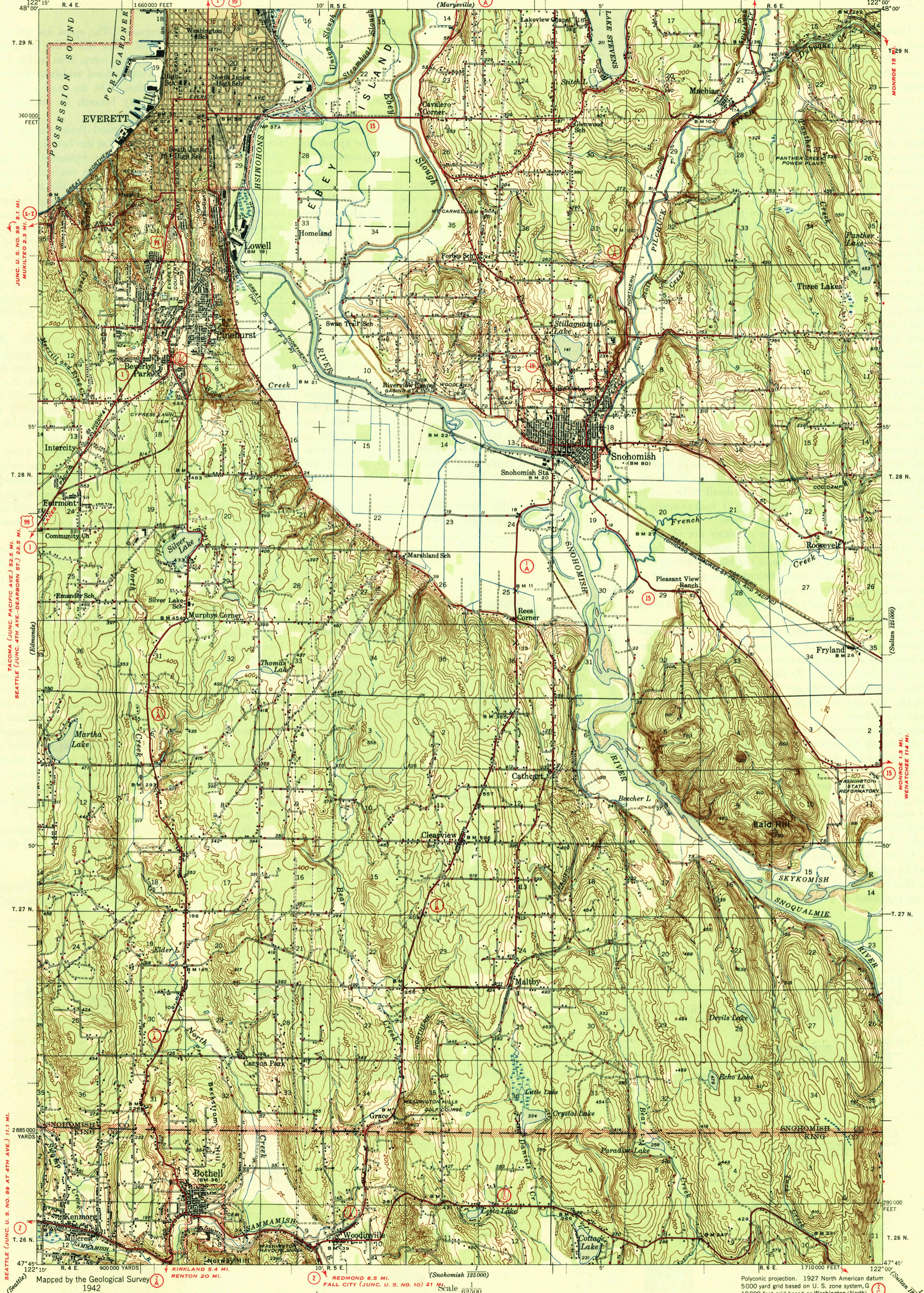


FILE COPY
Inspection and Editing

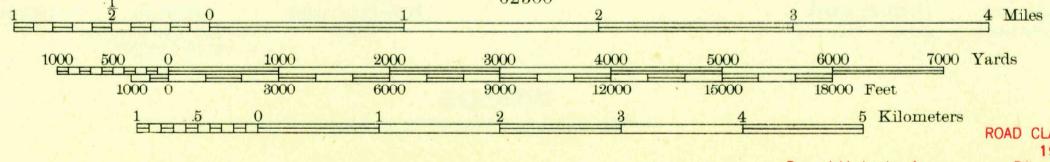
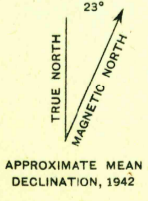
BELLINGHAM (CIVIC CENTER) 58 MI.
MARYSVILLE 4 MI.
UNITED STATES
DEPARTMENT OF THE INTERIOR
GEOLOGICAL SURVEY

WAR DEPARTMENT
CORPS OF ENGINEERS, U. S. ARMY
MARYSVILLE 5 MI. GRANITE FALLS 11 MI.
LAKE STEVENS 3.8 MI.

ARLINGTON 15.5 MI. WASHINGTON
HARTFORD 1.7 MI.
EVERETT QUADRANGLE
15-MINUTE SERIES



Gray tint indicates areas in which only landmark buildings are shown



ROAD CLASSIFICATION 1944

Dependable hard-surface heavy-duty road	Dry weather roads
Secondary hard-surface all-weather road	Loose-surface, graded
	Unsurfaced, graded
	Dirt road

More than two lanes indicated along road with tick at point of change

Polyconic projection. 1927 North American datum
5000 yard grid based on U. S. zone system, G
10000 foot grid based on Washington (North)
rectangular coordinate system

EVERETT, WASH.
Edition of 1944
N4745-W12200/15

U.S. GEOLOGICAL SURVEY
FILE COPY
Inspection and Editing

USGS
Historical File
Topographic Division