

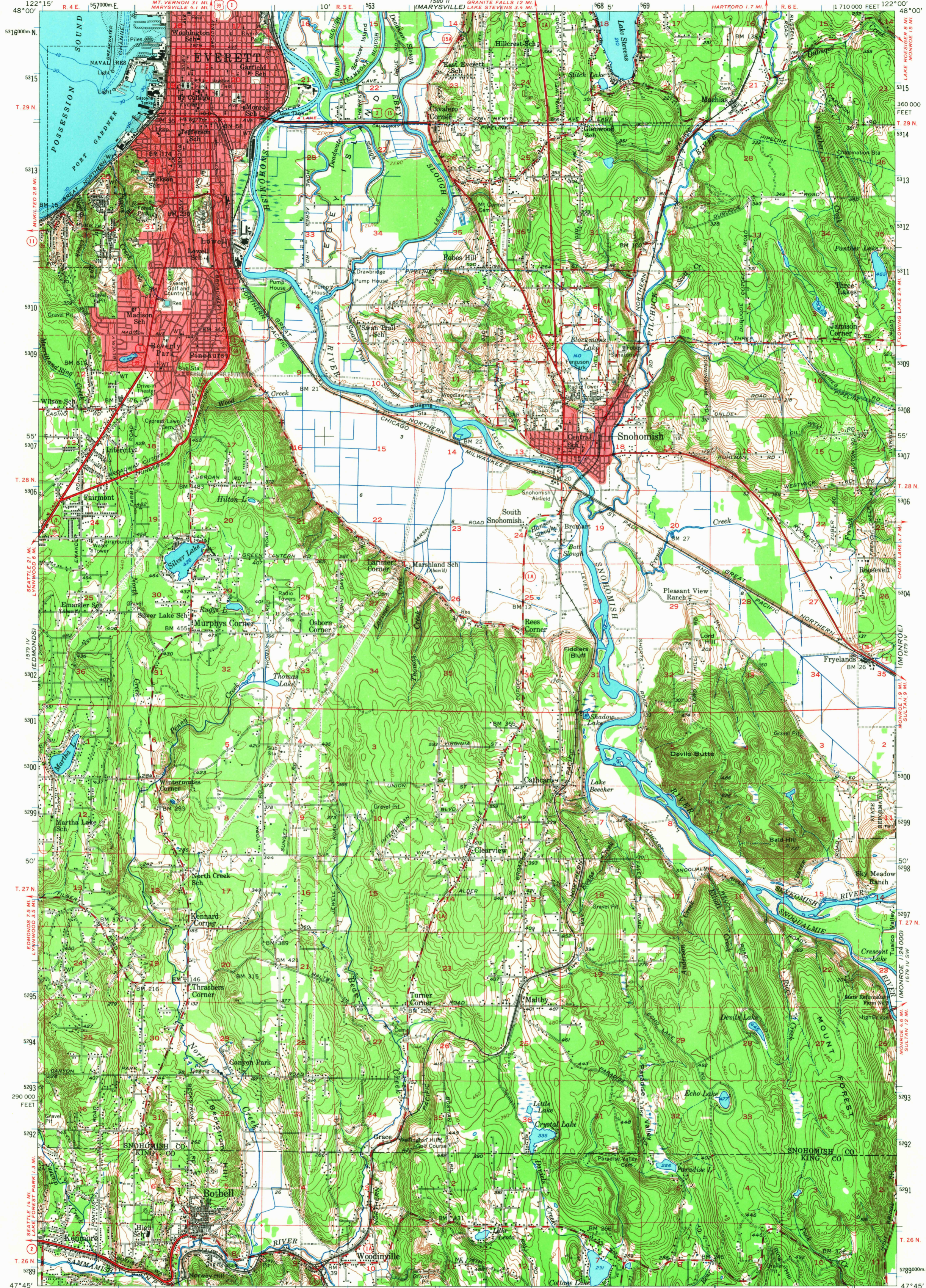
122°15' W
48°00' N

UNITED STATES
DEPARTMENT OF THE INTERIOR
GEOLOGICAL SURVEY

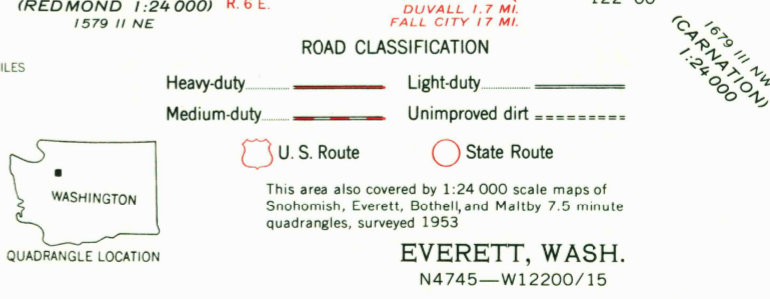
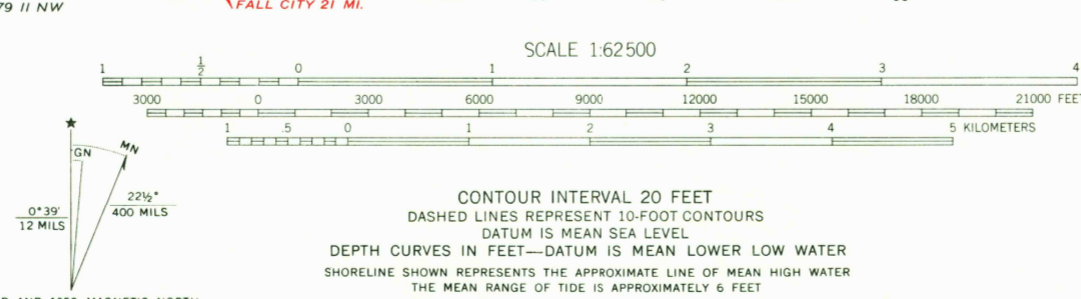
UNITED STATES
DEPARTMENT OF THE ARMY
CORPS OF ENGINEERS

EVERETT QUADRANGLE
WASHINGTON
15 MINUTE SERIES (TOPOGRAPHIC)

122°00' W
48°00' N



Compiled by the Army Map Service
Published for civil use by the Geological Survey
Control by USGS and USC&GS
Compiled in 1956 from Geological Survey 1:24 000
scale maps of Snohomish, Everett, Bothell, and
Malibu 7.5 minute quadrangles, surveyed 1953
Topography from aerial photographs by multiplex methods
and by planimetry surveys 1953. Aerial photographs taken 1952
Hydrography compiled from USC&GS chart 6448
Polyconic projection. 1927 North American datum
10,000-foot grid based on Washington coordinate system,
north zone
1000-meter Universal Transverse Mercator grid ticks,
zone 10, shown in blue
Red tint indicates areas in which only
landmark buildings are shown
Dashed land lines indicate approximate locations
Areas covered by dashed light-blue pattern
are subject to inundation



THIS MAP COMPLIES WITH NATIONAL MAP ACCURACY STANDARDS
FOR SALE BY U. S. GEOLOGICAL SURVEY, DENVER, COLORADO 80225 OR WASHINGTON, D. C. 20242
A FOLDER DESCRIBING TOPOGRAPHIC MAPS AND SYMBOLS IS AVAILABLE ON REQUEST

U.S.G.S.
FILE COPY
TOPOGRAPHIC DIVISION
EVERETT, WASH.
N4745-W12200/15
1953
AMS 1579 I-SERIES V791
Historical File
Topographic Division
3225
JUL 12 1968