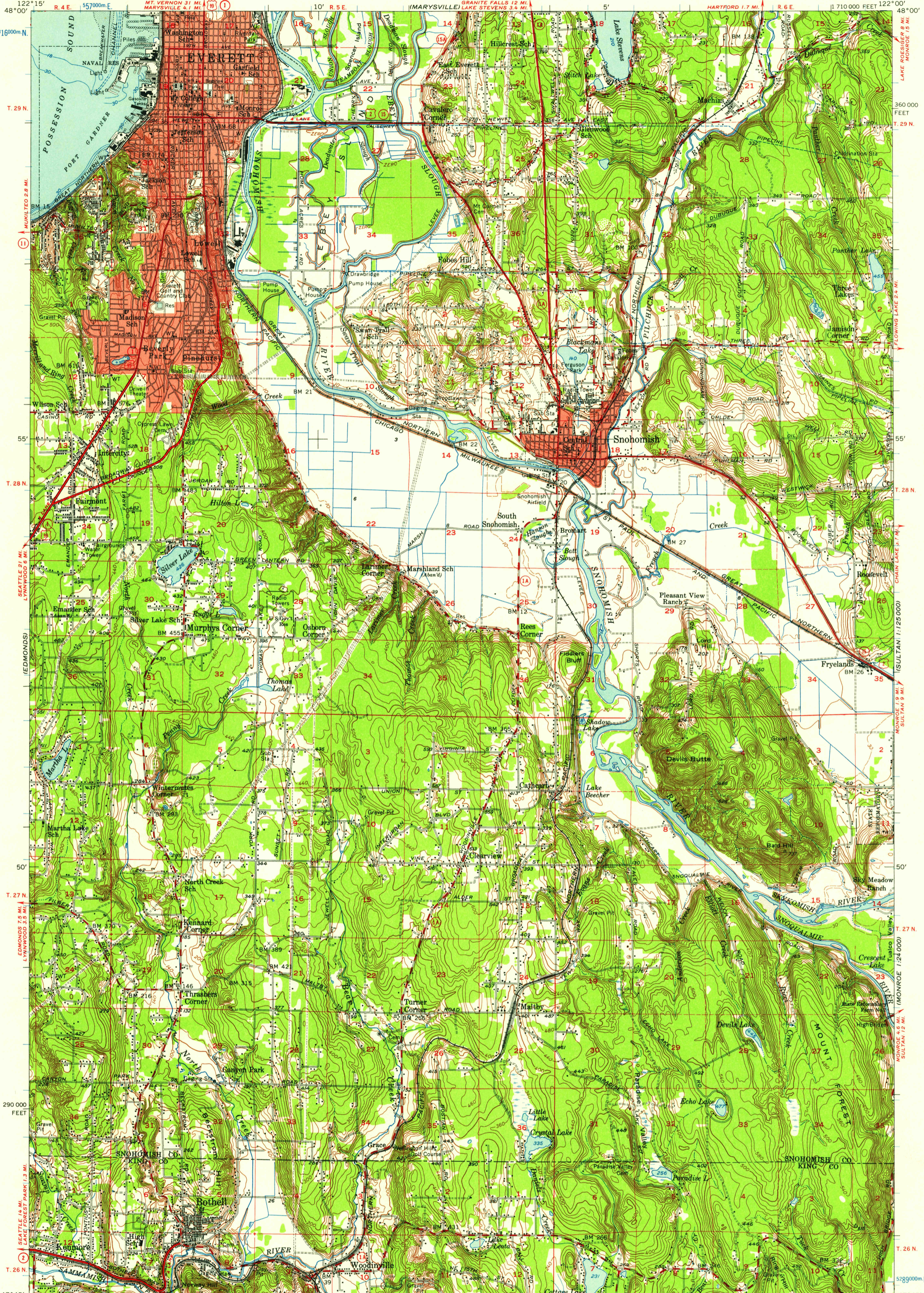
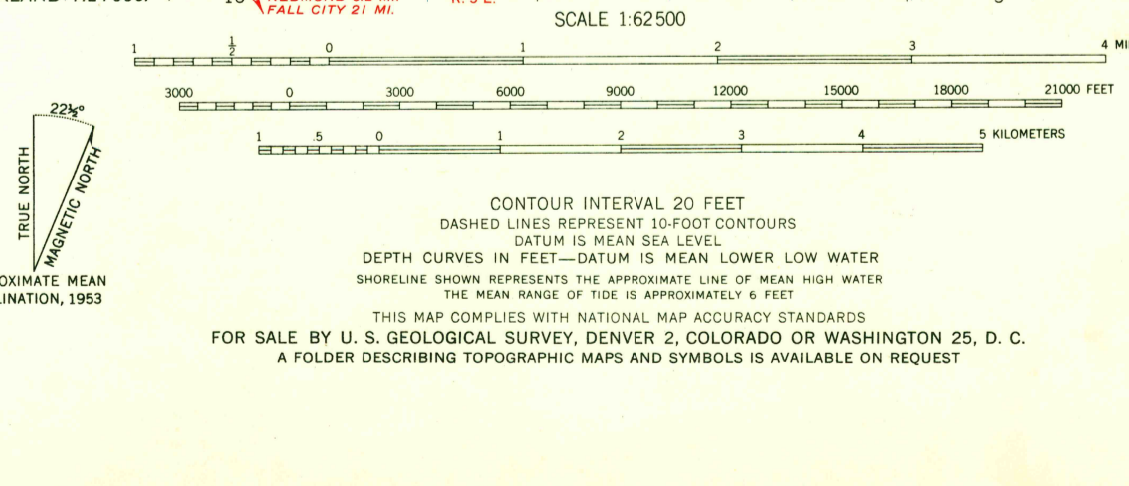


(STANWOOD)
122°15' W
48°00' N

(STILLQUAMISH)
122°00' W
48°00' N



Compiled by the Army Map Service
Published for civil use by the Geological Survey
Control by USGS and USC&GS
Compiled in 1956 from Geological Survey 1:24 000
scale maps of Snohomish, Everett, Bothell, and
Maltby 7.5 minute quadrangles, surveyed 1953
Topography from aerial photographs by multiplex methods
and by planetable surveys 1953. Aerial photographs taken 1952
Hydrography compiled from USC&GS chart 6448
Polyconic projection. 1927 North American datum
10,000-foot grid based on Washington coordinate system,
north zone
1000-meter Universal Transverse Mercator grid ticks,
zone 10, shown in blue
Red tint indicates areas in which only
landmark buildings are shown
Dashed land lines indicate approximate locations
Areas covered by dashed light-blue pattern
are subject to inundation



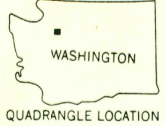
ROAD CLASSIFICATION
Heavy-duty ——— Light-duty ———
Medium-duty ——— Unimproved dirt ———

U. S. Route State Route

This area also covered by 1:24 000 scale maps of
Snohomish, Everett, Bothell, and Maltby 7.5 minute
quadrangles, surveyed 1953

EVERETT, WASH.
N4745-W12200/15
1953

USGS
Historical File
Topographic Division



U.S.G.S.
FILE COPY
TOPOGRAPHIC DIVISION

USGS
Historical File
Topographic Division

SEP - 5 1958

2840