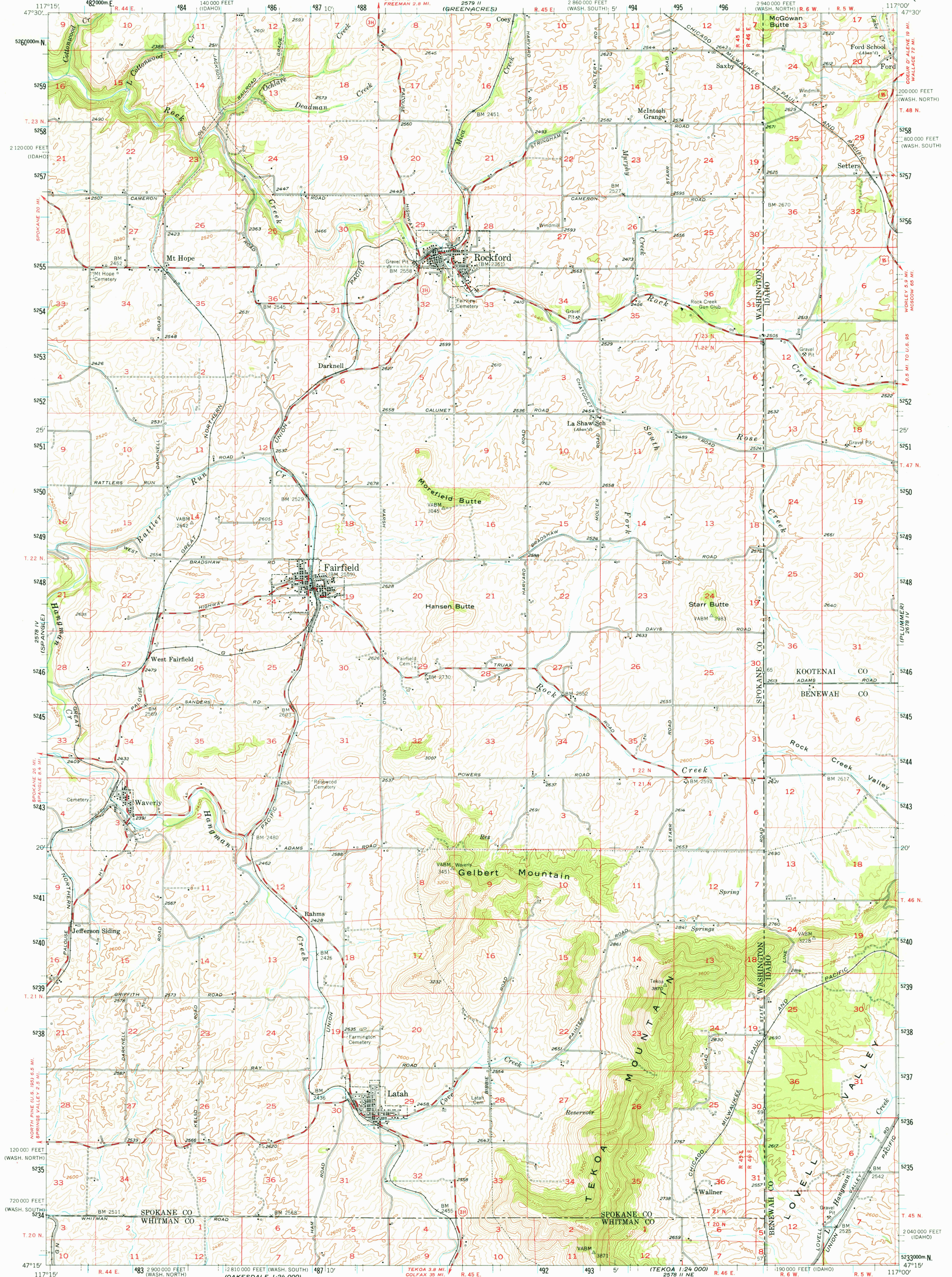


2578 II (SPOKANE)

UNITED STATES  
DEPARTMENT OF THE INTERIOR  
GEOLOGICAL SURVEY

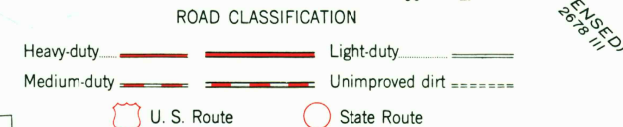
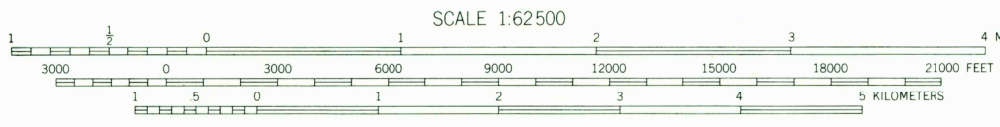
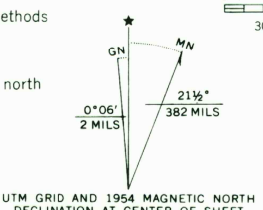
FAIRFIELD QUADRANGLE  
WASHINGTON-IDAHO  
15 MINUTE SERIES (TOPOGRAPHIC)

2579 II (COEUR D'ALENE)



Mapped, edited, and published by the Geological Survey  
Control by USGS and USC&GS

Topography from aerial photographs by photogrammetric methods  
Aerial photographs taken 1952. Field check 1954  
Polyconic projection. 1927 North American datum  
10,000-foot grids based on Washington coordinate system, north  
and south zones and Idaho coordinate system west zone  
Dashed land lines indicate approximate locations  
1000-meter Universal Transverse Mercator grid ticks  
zone 11, shown in blue



FAIRFIELD, WASH.-IDAHO  
N4715-W11700/15

1954

AMS 2578 I-SERIES V791

THIS MAP COMPLIES WITH NATIONAL MAP ACCURACY STANDARDS  
FOR SALE BY U. S. GEOLOGICAL SURVEY, DENVER, COLORADO 80225 OR WASHINGTON, D. C. 20242  
A FOLDER DESCRIBING TOPOGRAPHIC MAPS AND SYMBOLS IS AVAILABLE ON REQUEST