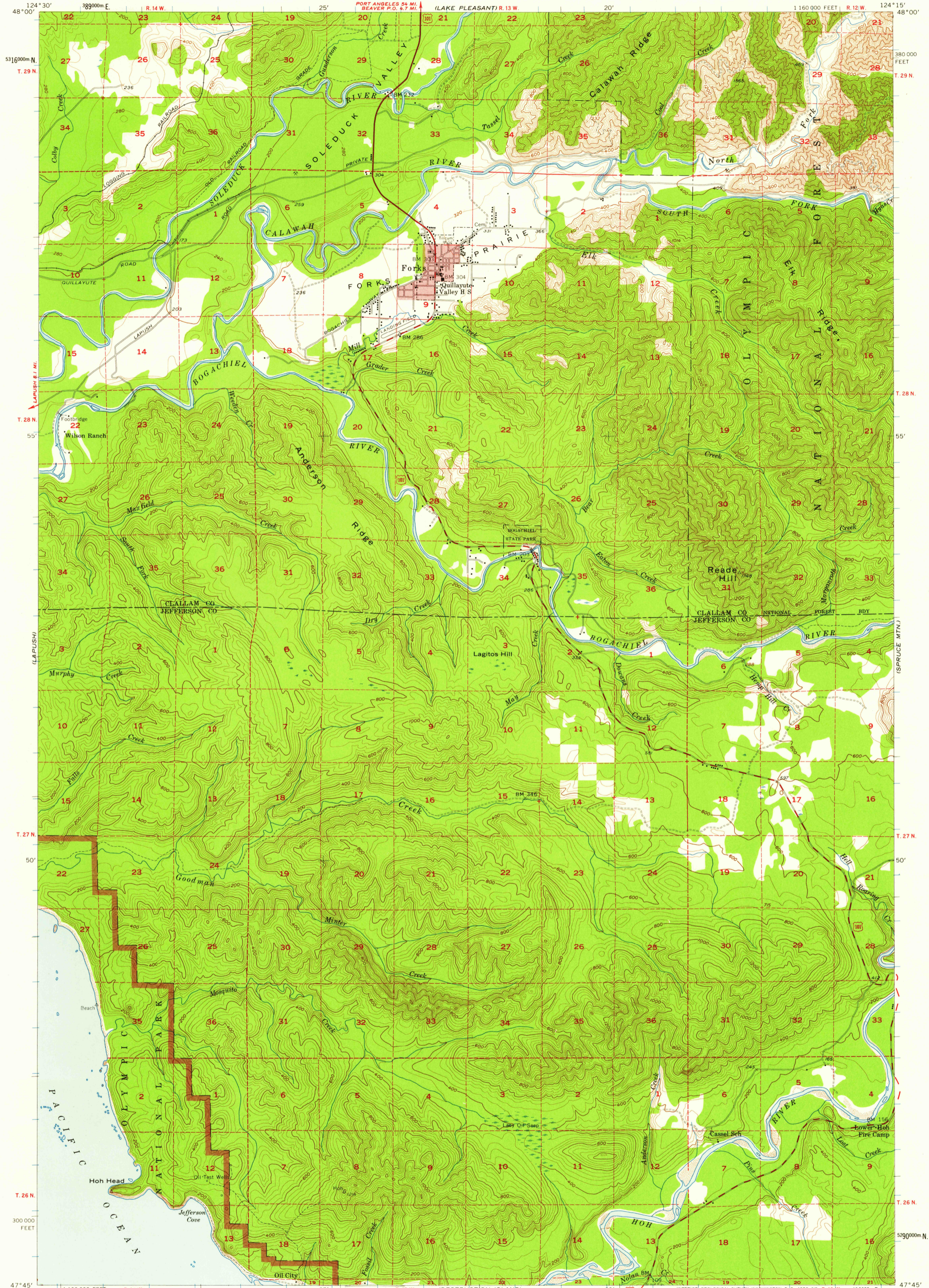


COLETTE LAKE

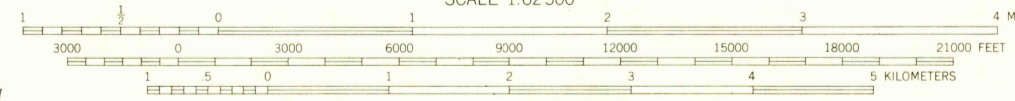
UNITED STATES DEPARTMENT OF THE INTERIOR GEOLOGICAL SURVEY

FORKS QUADRANGLE WASHINGTON 15 MINUTE SERIES (TOPOGRAPHIC)



47°45' 124°30' 1100000 FEET R.14 W. 25' (DESTRUCTION ISLAND) SCALE 1:62500 20' 406000m N. 47°45' 124°15'

Mapped, edited, and published by the Geological Survey Control by USGS and USC&GS Topography from aerial photographs by ER-55 plotter Aerial photographs taken 1955. Field check 1957 Polyconic projection. 1927 North American datum 10,000 foot grid based on Washington coordinate system, north zone 1000-meter Universal Transverse Mercator grid ticks, zone 10, shown in blue Red tint indicates areas in which only landmark buildings are shown Dashed land lines indicate approximate locations Unchecked elevations are shown in brown



CONTOUR INTERVAL 40 FEET DATUM IS MEAN SEA LEVEL SHORELINE SHOWN REPRESENTS THE APPROXIMATE LINE OF MEAN HIGH WATER THE MEAN RANGE OF TIDE IS APPROXIMATELY 6 FEET

ROAD CLASSIFICATION Heavy duty Light duty Medium-duty Unimproved dirt U.S. Route



FORKS, WASH. N4745-W12415/15 1957

U.S.G.S. FILE COPY TOPOGRAPHIC DIVISION

USGS Historical File Topographic Division MAY 13 1959

2445